

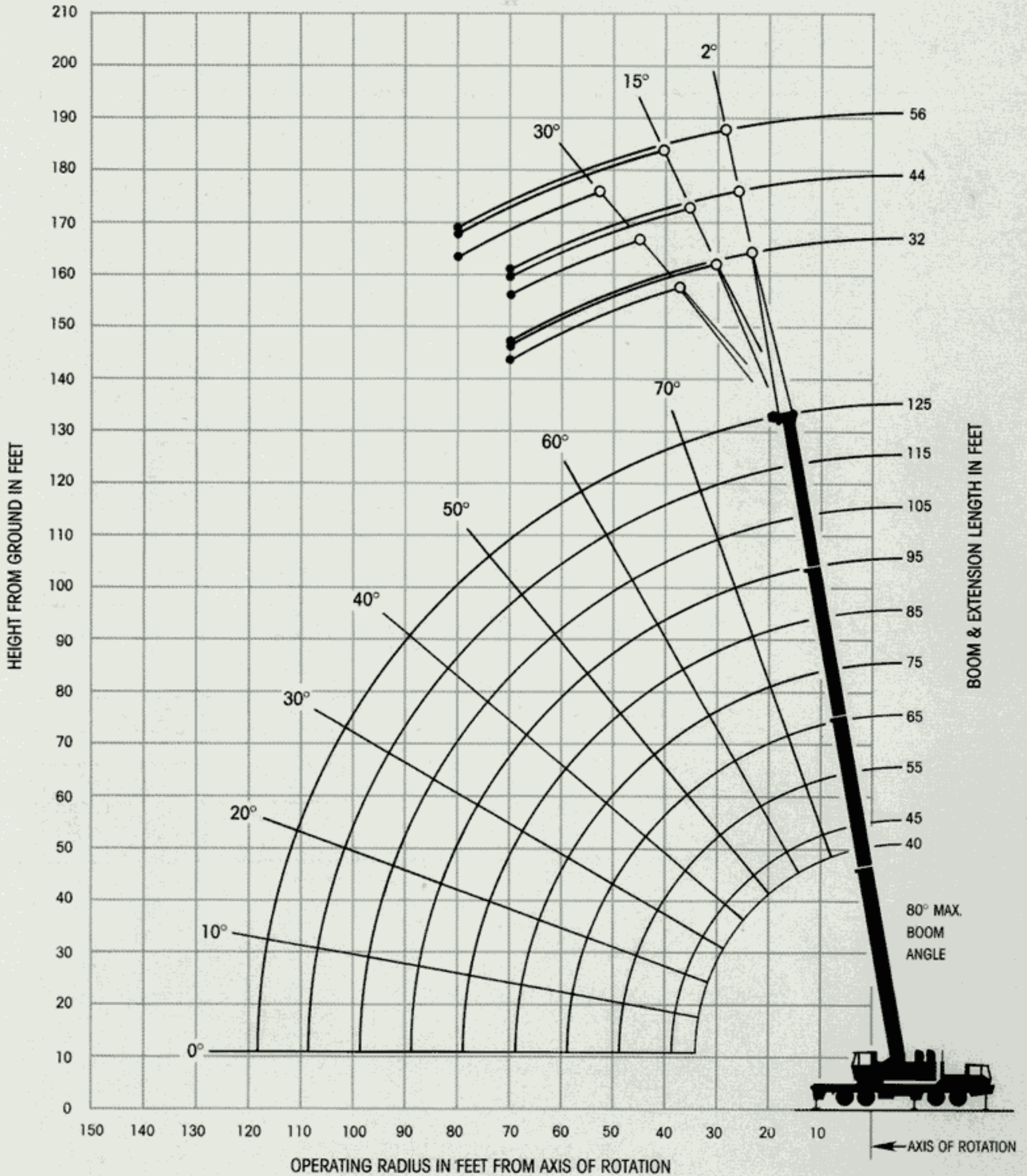


GROVE[®]
worldwide

TMS875B

Carrier-mounted hydraulic crane/85% Domestic
40 ft. - 125 ft. full power

**WORKING RANGE DIAGRAM
(BOOM DEFLECTION NOT SHOWN)**



**40 FT. - 125 FT BOOM
ON OUTRIGGERS WITHOUT COUNTERWEIGHT - 360°**

| Radius in Feet | Main Boom Length in Feet | | | | | | | | | |
|--|--------------------------|-------------------|-------------------|------------------|------------------|------------------|------------------|------------------|------------------|------------------|
| | 40 | 45 | 55 | 65 | 75 | 85 | 95 | 105 | 115 | 125 |
| 10 | 140,500 (72) | 115,000 (74.5) | 113,500 (77.5) | 84,650 (80) | | | | | | |
| 12 | 115,000 (68.5) | 114,500 (71.5) | 113,500 (75.5) | 84,650 (78) | 55,450 (80) | | | | | |
| 15 | 89,400 (64) | 88,800 (67.5) | 87,950 (72) | 81,200 (75.5) | 55,450 (77.5) | 55,450 (79.5) | 49,900 (80.5) | | | |
| 20 | 58,250 (55) | 58,000 (60) | 57,450 (66.5) | 56,950 (70.5) | 55,450 (73.5) | 55,450 (76) | 49,900 (78) | 38,800 (79.5) | 27,500 (80.5) | 23,000 (81) |
| 25 | 32,750 (44.5) | 35,700 (52) | 32,600 (60.5) | 32,500 (65.5) | 33,400 (69.5) | 29,600 (72.5) | 35,750 (75) | 37,100 (77) | 27,500 (78.5) | 23,000 (80) |
| 30 | 21,500 (31) | 21,100 (42.5) | 20,450 (54) | 19,800 (60.5) | 20,450 (65.5) | 19,700 (69) | 22,900 (71.5) | 23,750 (74) | 24,600 (76) | 23,000 (77.5) |
| 35 | | 14,800 (30) | 13,750 (46.5) | 12,650 (55) | 13,200 (61) | 9,900 (65) | 15,500 (68.5) | 16,250 (71) | 17,000 (73) | 17,750 (75) |
| 40 | | | 8,410 (38) | 7,870 (49) | 8,510 (56) | 7,130 (61) | 10,750 (65) | 11,450 (68) | 12,150 (70.5) | 12,800 (72.5) |
| 45 | | | 5,110 (27) | 4,620 (42.5) | 5,250 (51) | 5,040 (57) | 7,450 (61.5) | 8,100 (65) | 8,750 (68) | 9,370 (70) |
| 50 | | | | 2,220 (35) | 2,850 (46) | 3,930 (52.5) | 5,010 (58) | 5,630 (62) | 6,250 (65) | 6,840 (67.5) |
| 60 | | | | | | | 1,660 (50) | 2,230 (55) | 2,810 (59) | 3,360 (62) |
| 70 | | | | | | | | | | 1,070 (56.5) |
| Minimum boom angle (deg.) for indicated length (no load) | | | | | | | | | | 39.5 |
| Maximum boom length (ft.) at 0 deg. boom angle (no load) | | | | | | | | | | 85 |

Note: () Boom angles are in degrees.

| Lifting Capacities On Outriggers - 360 Degrees At Zero Degree Boom Angle | | | | | | | | | | |
|---|--------------------------|------------------|-----------------|--|--|--|--|--|--|--|
| Boom Angle | Main Boom Length in Feet | | | | | | | | | |
| | 40 | 45 | 55 | | | | | | | |
| 0° | 16,500 (33.7) | 10,300 (39.1) | 3,650 (49.1) | | | | | | | |

Note: () Reference radii in feet.

**40 FT. - 125 FT. BOOM TELE EXTENSION
ON OUTRIGGERS WITHOUT COUNTERWEIGHT - 360°**

| Radius in Feet | 32 ft. LENGTH | | | 44 ft. LENGTH | | | 56 ft. LENGTH | | |
|----------------|-------------------|-------------------|------------------|-------------------|-----------------|-----------------|------------------|-----------------|-----------------|
| | 2° OFFSET | 15° OFFSET | 30° OFFSET | 2° OFFSET | 15° OFFSET | 30° OFFSET | 2° OFFSET | 15° OFFSET | 30° OFFSET |
| 25 | *16,000 (81.6) | | | | | | | | |
| 30 | 16,000 (81) | | | *10,000 (81.6) | | | | | |
| 35 | 16,000 (79) | *12,300 (81.6) | | 10,000 (81) | | | *7,500 (81.6) | | |
| 40 | 13,550 (77) | 11,600 (80.5) | *9,000 (81.6) | 10,000 (79) | 9,000 (81.5) | | 7,500 (81) | | |
| 45 | 9,890 (75.5) | 9,890 (78.5) | 8,700 (80) | 10,000 (77.5) | 8,750 (79.5) | | 7,500 (79.5) | | |
| 50 | 7,190 (73.5) | 7,190 (76.5) | 7,190 (78) | 9,000 (75.5) | 8,300 (78) | 6,000 (81.5) | 7,500 (78) | 6,000 (80) | |
| 60 | 3,470 (69.5) | 3,470 (72.5) | 3,470 (74) | 5,860 (72) | 5,860 (74.5) | 5,700 (77.5) | 5,040 (74.5) | 5,040 (76.5) | 4,700 (80.5) |
| 70 | 1,040 (65.5) | 1,040 (68.5) | 1,040 (70) | 2,790 (68) | 2,790 (70.5) | 2,790 (74) | 2,770 (71) | 2,770 (73.5) | 2,770 (77) |
| 80 | | | | | | | 1,160 (67.5) | 1,160 (70) | 1,160 (73.5) |

*This capacity based upon maximum boom angle.

A6-829-011274

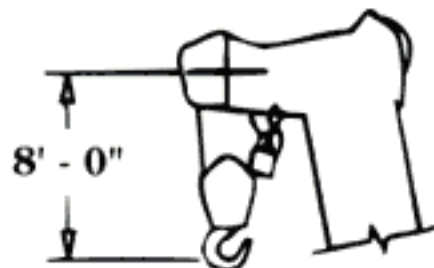
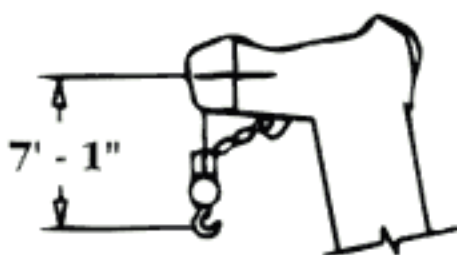
**WEIGHT REDUCTIONS FOR
LOAD HANDLING DEVICES**

| 32 - 56 ft. Tele. Ext. | |
|------------------------|-------------|
| *Stowed - | 1,062 lbs. |
| *Erected (ret.) - | 8,514 lbs. |
| *Erected (ext.) - | 11,136 lbs. |

*Reduction of main boom capacities.

| | |
|---|-------------|
| AUXILIARY BOOM HEAD | 178 lbs. |
| HOOKBLOCKS & HEADACHE BALLS: | |
| 80 Ton, 6 Sheave | 1,930 lbs.* |
| 45 Ton, 3 Sheave | 1,095 lbs.* |
| 15 Ton, 1 Sheave | 380 lbs.* |
| 10 Ton Headache Ball | 560 lbs.* |
| 7 1/2 Ton Headache Ball | 338 lbs.* |

*Refer to rating plate for actual weight.



DIMENSIONS ARE FOR LARGEST GROVE FURNISHED HOOK BLOCK AND HEADACHE BALL, WITH ANTI-TWO BLOCK ACTIVATED.

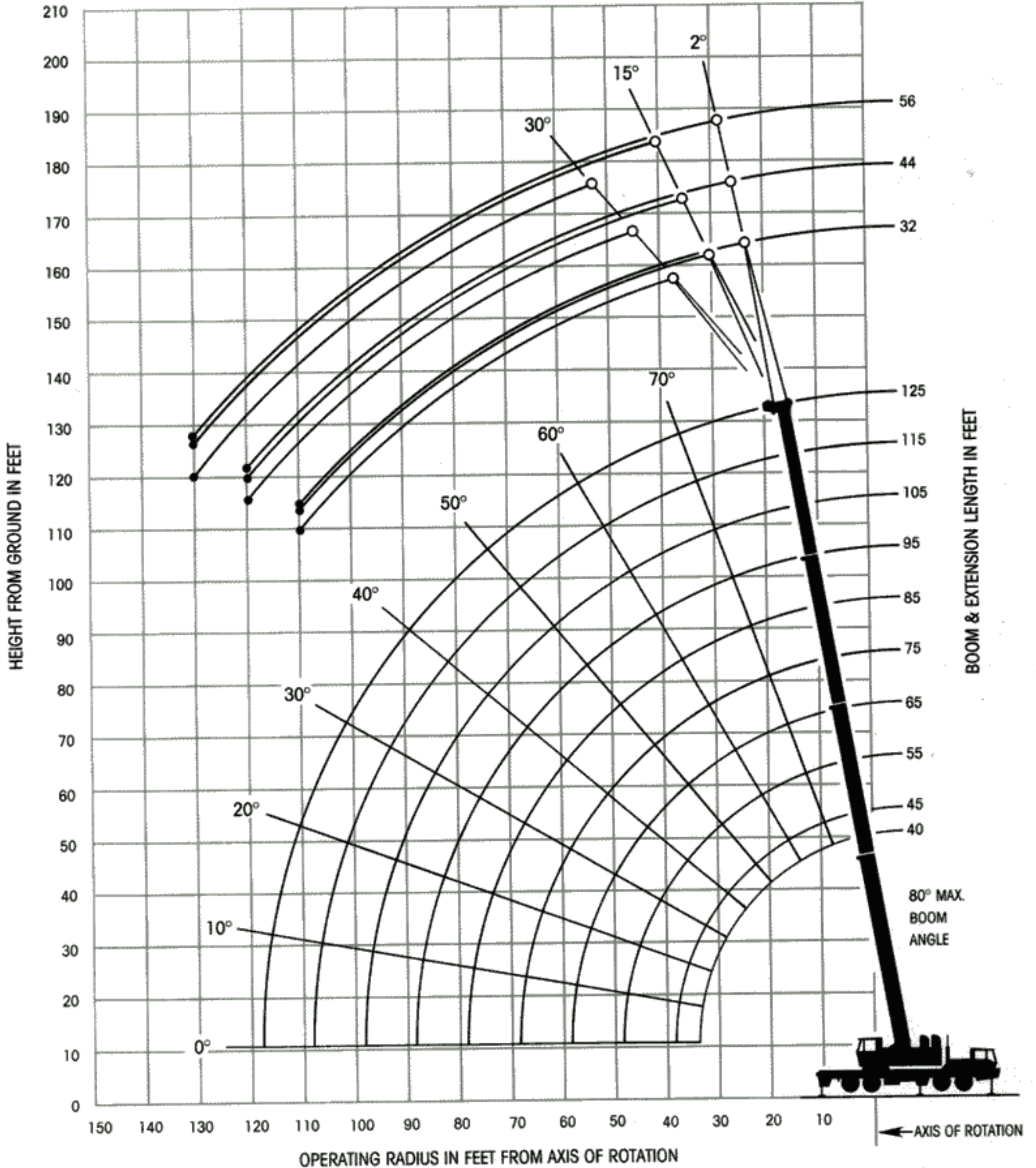


GROVE[®]
worldwide

TMS875B

Carrier-mounted hydraulic crane/85% Domestic
40 ft. -125 ft. full power boom

**WORKING RANGE DIAGRAM
(BOOM DEFLECTION NOT SHOWN)**



**40 FT. - 125FT. BOOM
ON OUTRIGGERS FULLY EXTENDED - 360°**

| Radius in Feet | Main Boom Length in Feet | | | | | | | | | |
|--|--------------------------|-------------------|-------------------|------------------|------------------|------------------|------------------|------------------|------------------|------------------|
| | 40 | 45 | 55 | 65 | 75 | 85 | 95 | 105 | 115 | 125 |
| 10 | 150,000 (72) | 115,000 (74.5) | 113,500 (77.5) | 84,650 (80) | | | | | | |
| 12 | 129,000 (68.5) | 115,000 (71.5) | 113,500 (75.5) | 84,650 (78) | 55,450 (80) | | | | | |
| 15 | 101,000 (64) | 100,500 (67.5) | 99,750 (72) | 81,200 (75.5) | 55,450 (77.5) | 55,450 (79.5) | 49,900 (80.5) | | | |
| 20 | 72,250 (55) | 71,650 (60) | 70,850 (66.5) | 62,250 (70.5) | 55,450 (73.5) | 55,450 (76) | 49,900 (78) | 38,800 (79.5) | 27,500 (80.5) | 23,000 (81) |
| 25 | 54,600 (44.5) | 54,000 (52) | 53,250 (60.5) | 49,850 (65.5) | 46,600 (69.5) | 44,800 (72.5) | 42,000 (75) | 38,800 (77) | 27,500 (78.5) | 23,000 (80) |
| 30 | 43,000 (31) | 42,450 (42.5) | 41,700 (54) | 41,150 (60.5) | 38,500 (65.5) | 37,000 (69) | 35,850 (71.5) | 33,750 (74) | 25,700 (76) | 23,000 (77.5) |
| 35 | | 34,250 (30) | 33,550 (46.5) | 33,000 (55) | 32,450 (61) | 31,100 (65) | 30,150 (68.5) | 28,450 (71) | 21,900 (73) | 23,000 (75) |
| 40 | | | 27,100 (38) | 26,150 (49) | 26,650 (56) | 26,600 (61) | 25,800 (65) | 24,350 (68) | 18,900 (70.5) | 21,050 (72.5) |
| 45 | | | 21,200 (27) | 20,400 (42.5) | 20,900 (51) | 21,900 (57) | 22,300 (61.5) | 21,100 (65) | 16,500 (68) | 18,500 (70) |
| 50 | | | | 16,150 (35) | 16,650 (46) | 17,600 (52.5) | 18,550 (58) | 18,500 (62) | 14,650 (65) | 16,350 (67.5) |
| 60 | | | | | 10,800 (32.5) | 11,650 (43) | 12,550 (50) | 13,050 (55) | 11,750 (59) | 13,000 (62) |
| 70 | | | | | | 7,880 (30.5) | 8,630 (41) | 9,110 (47.5) | 9,590 (52.5) | 10,050 (56.5) |
| 80 | | | | | | | 5,860 (29) | 6,310 (39) | 6,770 (45.5) | 7,210 (50.5) |
| 90 | | | | | | | | 4,240 (28) | 4,680 (37.5) | 5,090 (44) |
| 100 | | | | | | | | | 3,090 (27) | 3,460 (36) |
| 110 | | | | | | | | | | 2,160 (25.5) |
| Minimum boom angle (deg.) for indicated length (no load) | | | | | | | | | | 0 |
| Maximum boom length (ft.) at 0 deg. boom angle (no load) | | | | | | | | | | 125 |

Note: () Boom angles are in degrees.

Lifting Capacities On Outriggers - 360 Degrees At Zero Degree Boom Angle

| Boom Angle | Main Boom Length in Feet | | | | | | | | | |
|------------|--------------------------|------------------|------------------|------------------|-----------------|-----------------|-----------------|-----------------|------------------|------------------|
| | 40 | 45 | 55 | 65 | 75 | 85 | 95 | 105 | 115 | 125 |
| 0° | 30,400 (33.7) | 24,900 (39.1) | 17,600 (49.1) | 10,750 (59.1) | 7,420 (69.1) | 5,430 (79.1) | 3,960 (89.1) | 2,830 (99.1) | 1,930 (109.1) | 1,230 (118.7) |

Note: () Reference radii in feet.

40 FT.-125 FT. BOOM TELE. EXTENSION ON OUTRIGGERS - 360°

NOTES FOR LIFTING CAPACITIES

"WARNING: THIS CHART IS ONLY A GUIDE. The Notes below are for illustration only and should not be relied upon to operate the crane. The individual crane's load chart, operating instructions and other instruction plates must be read and understood prior to operating the crane".

- All rated loads have been tested to and meet minimum requirements of SAE J1063 OCT80 - Cantilevered Boom Crane Structures - Method of Test, and do not exceed 85% of the tipping load on outriggers (75% of tipping load on rubber) as determined by SAE J765 OCT80 Crane Stability Test Code.
- Capacities given do not include the weight of hookblocks, slings, auxiliary lifting equipment and load handling devices. Their weights **MUST** be added to the load to be lifted. When more than minimum required reeving is used, the additional rope weight shall be considered part of the load.
- All capacities are for crane on firm, level surface. It may be necessary to have structural supports under the outrigger floats or tires to spread the load to a larger bearing surface.
- When either boom length or radius or both are between values listed, the smallest load shown at either the next larger radius or boom length shall be used.
- For outrigger operation, ALL outriggers shall be fully extended with tires raised free of ground before raising the boom or lifting loads.
- Tires shall be inflated to the recommended pressure before lifting on rubber.
- Unless otherwise stated, capacities are with powered boom sections equally extended.
- Capacities appearing above the bold line are based on structural strength and tipping should not be relied upon as a capacity limitation.
- With tele-boom extension in working position and main boom length greater than 70 ft., boom angle must not be less than 30°.

Constant improvement and engineering progress make it necessary that we reserve the right to make specification, equipment, and price changes without notice. Illustrations shown may include optional equipment and accessories and may not include all standard equipment.



Grove Worldwide - World Headquarters
1565 Buchanan Trail East
Shady Grove, Pennsylvania 17256
Phone: (717) 597-8121 Telex: 1842308 Fax: (717) 597-4062

Grove North America
P.O. Box 21, Shady Grove, Pennsylvania 17256
Western Hemisphere, Asia/Pacific
Phone: (717) 597-8121 Telex: 1842308 Fax: (717) 597-4062

Grove Europe*
Sunderland, England SR4 6TT
Europe, Africa, Middle East, Near East
Phone: (091) 565-6281 Telex: 53484 CRANESG Fax: (091) 564-0442
* Grove Europe Limited, Registered in England, Number 1845128, Registered office, Crown Works, Pallion, Sunderland, Tyne & Wear, England SR4 6TT.

| Radius in Feet | 32 ft. LENGTH | | | 44 ft. LENGTH | | | 56 ft. LENGTH | | |
|----------------|------------------|------------------|-----------------|------------------|-----------------|-----------------|-----------------|-----------------|-----------------|
| | 2' OFFSET | 15' OFFSET | 30' OFFSET | 2' OFFSET | 15' OFFSET | 30' OFFSET | 2' OFFSET | 15' OFFSET | 30' OFFSET |
| 25 | 16,000 (81.6) | | | | | | | | |
| 30 | 16,000 (81) | | | 10,000 (81.6) | | | | | |
| 35 | 16,000 (79) | 12,300 (81.6) | | 10,000 (81) | | | 7,500 (81.6) | | |
| 40 | 15,800 (77) | 11,600 (80.5) | 9,000 (81.6) | 10,000 (79) | 9,000 (81.5) | | 7,500 (81) | | |
| 45 | 15,600 (75.5) | 11,000 (78.5) | 8,700 (80) | 10,000 (77.5) | 8,750 (79.5) | | 7,500 (79.5) | | |
| 50 | 14,650 (73.5) | 10,500 (76.5) | 8,500 (78) | 9,000 (75.5) | 8,300 (78) | 6,000 (81.5) | 7,500 (78) | 6,000 (80) | |
| 60 | 12,850 (69.5) | 9,500 (72.5) | 8,000 (74) | 8,400 (72) | 7,500 (74.5) | 5,700 (77.5) | 7,500 (74.5) | 5,900 (76.5) | 4,700 (80.5) |
| 70 | 9,880 (65.5) | 8,600 (68.5) | 7,300 (70) | 7,800 (68) | 6,850 (70.5) | 5,400 (74) | 6,600 (71) | 5,550 (73.5) | 4,450 (77) |
| 80 | 6,900 (61) | 6,900 (64) | 6,600 (65.5) | 6,300 (64.5) | 6,300 (66.5) | 5,000 (70) | 6,100 (67.5) | 5,100 (70) | 4,150 (73.5) |
| 90 | 4,690 (56.5) | 4,690 (59.5) | 4,690 (61) | 5,190 (60.5) | 5,190 (62.5) | 4,800 (65.5) | 5,500 (64) | 4,700 (66) | 3,900 (69.5) |
| 100 | 2,980 (52) | 2,980 (55) | 2,980 (56) | 4,430 (56) | 4,430 (58.5) | 4,430 (61.5) | 4,500 (60) | 4,350 (62.5) | 3,700 (66) |
| 110 | 1,610 (46.5) | 1,610 (49.5) | 1,610 (50.5) | 2,890 (52) | 2,890 (54) | 2,890 (56.5) | 3,730 (56) | 3,730 (58.5) | 3,500 (61.5) |
| 120 | | | | 1,620 (47) | 1,620 (49) | 1,620 (51.5) | 2,510 (52) | 2,510 (54) | 2,510 (57.5) |
| 130 | | | | | | | 1,460 (47.5) | 1,460 (49.5) | 1,460 (52.5) |

NOTE: () Boom angles are in degrees.
*This capacity is based upon maximum boom angle.

A6-829011272

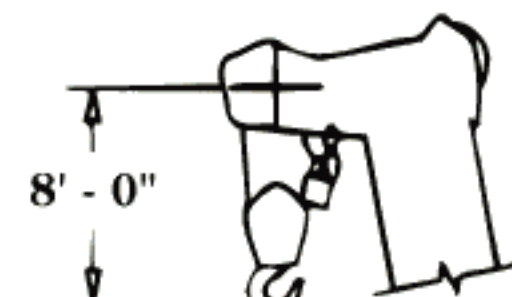
WEIGHT REDUCTIONS FOR LOAD HANDLING DEVICES

| 32 - 56 ft. Tele. Ext. | |
|------------------------|-------------|
| *Stowed - | 1,062 lbs. |
| *Erected (ret.) - | 8,514 lbs. |
| *Erected (ext.) - | 11,136 lbs. |

*Reduction of main boom capacities.

| | |
|------------------------------|-------------|
| AUXILIARY BOOM HEAD | 178 lbs. |
| HOOKBLOCKS & HEADACHE BALLS: | |
| 80 Ton, 6 Sheave | 1,930 lbs.* |
| 45 Ton, 3 Sheave | 1,095 lbs.* |
| 15 Ton, 1 Sheave | 380 lbs.* |
| 10 Ton Headache Ball | 560 lbs.* |
| 7 1/2 Ton Headache Ball | 338 lbs.* |

*Refer to rating plate for actual weight.



DIMENSIONS ARE FOR LARGEST GROVE FURNISHED HOOK BLOCK AND HEADACHE BALL, WITH ANTI-TWO BLOCK ACTIVATED.