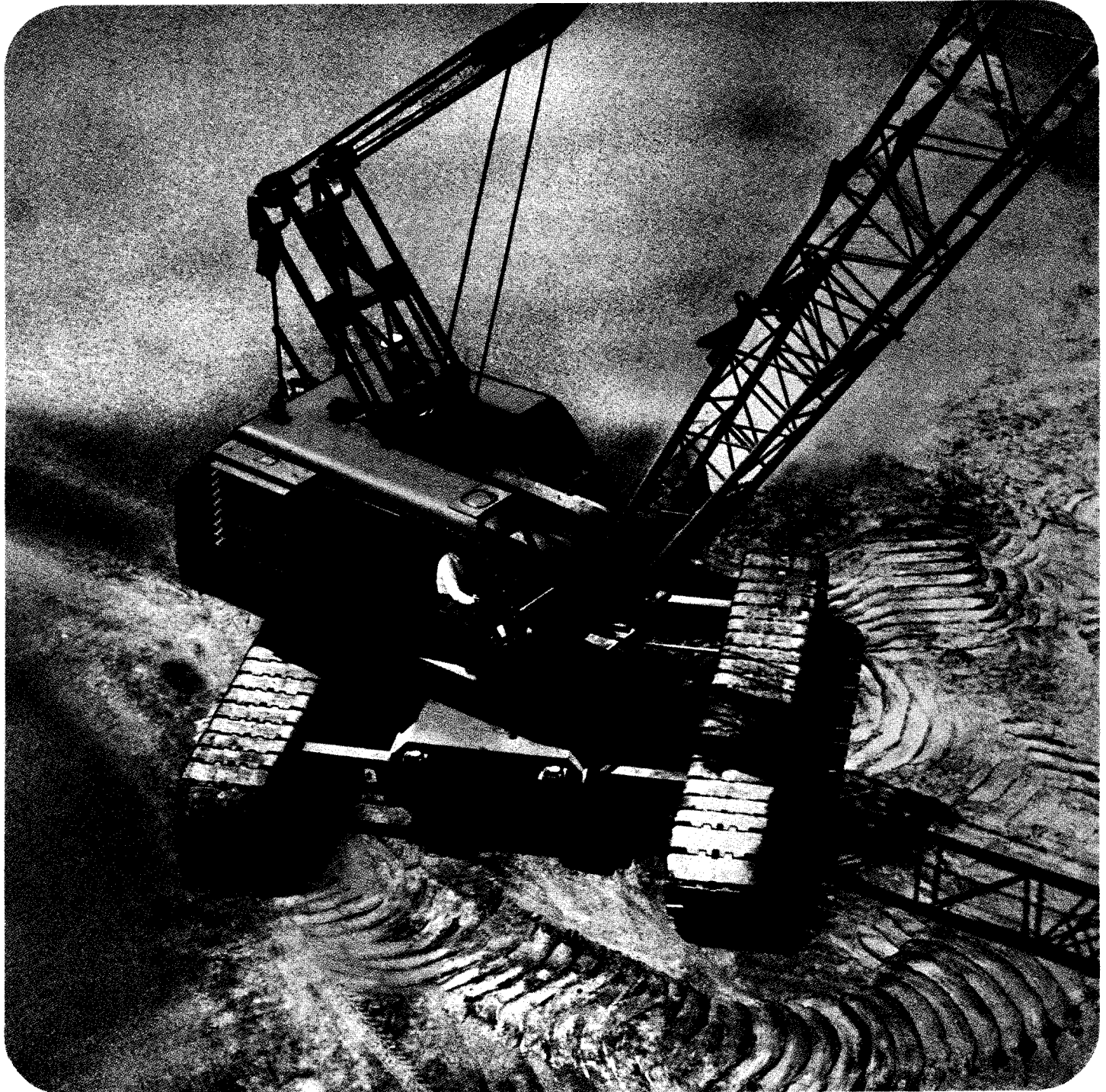


**MANITOWOC**

# 2900WC

**LIFTCRANE**

**PILEDRIVER**



specifications

# 2900WC

## MANITOWOC

- 11' 1" crawler width for close-quarter portability . . . quickly converted to
- 18' 8" crawler width for wide-track, maximum-lift stability
- Independent hydraulic drive crawlers for on-axis short turning radius . . . crawlers may be driven in opposite directions independently
- Low clearance profile . . . 12' overall height with gantry down

## SPECIFICATIONS

### POWER

**BASIC** — Cummins HS-672-B (previously HS-6-B1) Diesel with three stage Twin Disc torque converter; 6 cylinder; 4 $\frac{7}{8}$ " bore, 6" stroke; 672 cu. in. displacement; 180 net H.P. @ 1700 rpm.

**OPTIONAL** — GM 6-71 Diesel, Model 6055C, with three stage Twin Disc torque converter; 6 cylinder; 4 $\frac{1}{4}$ " bore, 5" stroke; 426 cu. in. displacement; 165 net H.P. @ 1600 rpm with master engine clutch engaged for hoist, swing or travel; 195 net H.P. @ 2000 rpm with master engine clutch disengaged for travel only.

### CONTROLS

Travel (hydraulic system) . . . . .

Swing . . . . .

Swing Brake . . . . .

Rear Drum Clutch . . . . .

Rear Drum Brake . . . . .

Right Front Drum Clutch . . . . .

Right Front Drum Brake . . . . .

Left Front Drum Clutch . . . . .

Left Front Drum Brake . . . . .

Independent Boom Hoist . . . . .

Auxiliary Boom Hoist Brake . . . . .

Engine Clutch Control . . . . .

Swing Lock Control . . . . .

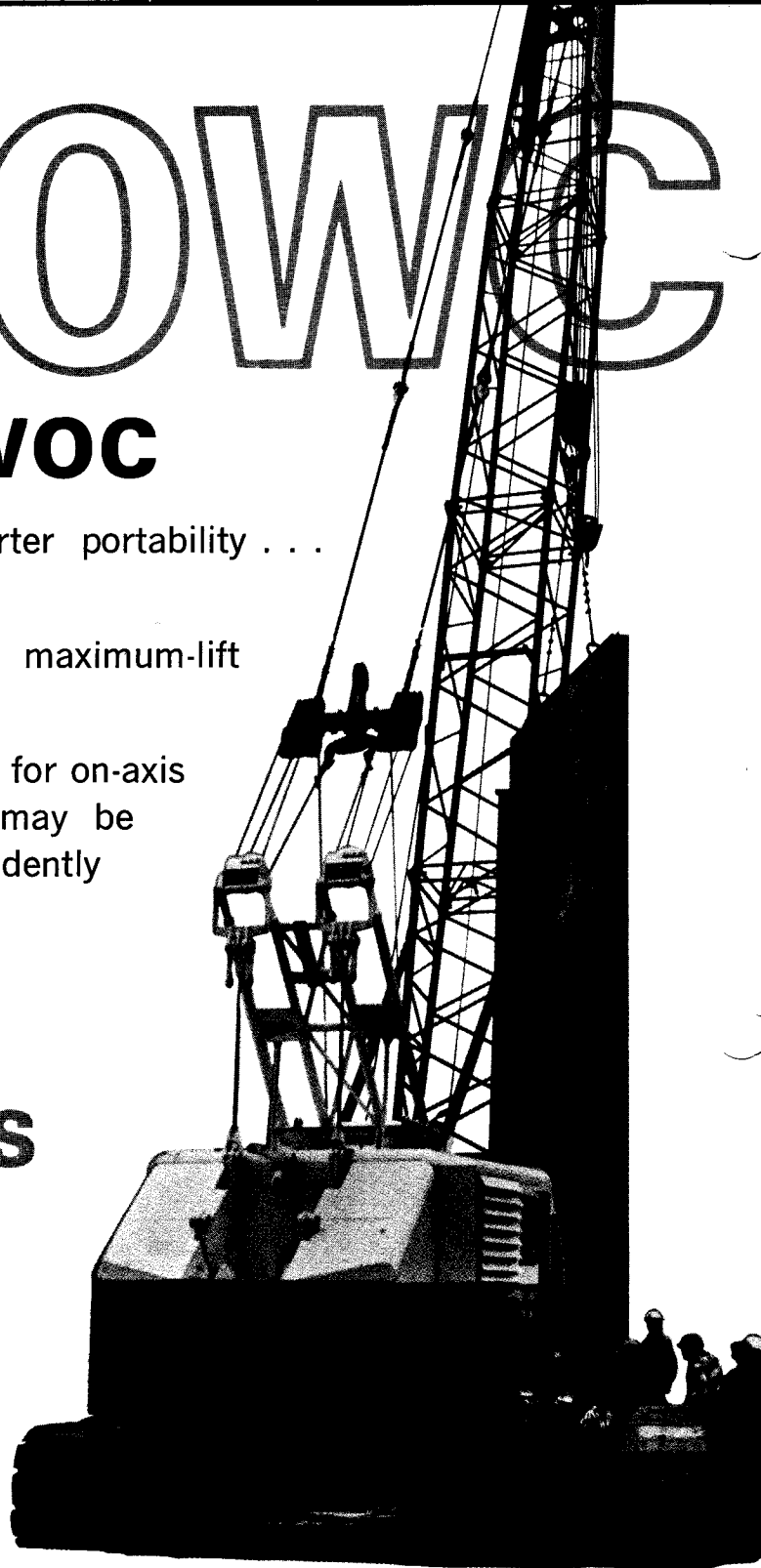
Two-Speed Shift Control . . . . .

Crawler Brakes — spring applied . . . . .

Carbody Hydraulic Jacks and Rams (optional) . . . . .

Carbody Manual Jacks and Rams . . . . .

	AIR	MANUAL	MANUAL-HYDRAULIC
Travel (hydraulic system)			X
Swing		X	
Swing Brake	X		
Rear Drum Clutch	X		
Rear Drum Brake		X	
Right Front Drum Clutch	X		
Right Front Drum Brake		X	
Left Front Drum Clutch	X		
Left Front Drum Brake		X	
Independent Boom Hoist	X		
Auxiliary Boom Hoist Brake		X	
Engine Clutch Control	X		
Swing Lock Control	X		
Two-Speed Shift Control	X		
Crawler Brakes — spring applied	X		
Carbody Hydraulic Jacks and Rams (optional)			X
Carbody Manual Jacks and Rams		X	



### TANK AND GEAR CASE CAPACITY

Fuel Tank . . . . .	75 Gal.
Cooling System with:	
Cummins HS-672-B . . . . .	18 Gal.
GM 6-71 (optional) . . . . .	12 Gal.
Drive Chain Case . . . . .	3 $\frac{1}{2}$ Gal.
Engine Crankcase with:	
Cummins HS-672-B — less filter . . . . .	7 Gal.
GM 6-71 (optional) — less filter . . . . .	4 $\frac{1}{2}$ Gal.
Crawler Drive Transmission (both crawlers) . . . . .	29 Gal.
Air Compressor . . . . .	1 Qt.
Hydraulic Travel System . . . . .	102 Gal.

## ROTATING BED

- House Rollers — 4: 2 front, 2 rear, anti-friction bearings.  
 Hook Rollers — 6: 2 front, 4 rear, anti-friction bearings.  
 Ring Gear — Roller Path: 86½" outside dia. with 4¼" face, internal teeth.

## DRUM SHAFT DATA

	FRONT DRUM		REAR DRUM
	RIGHT	LEFT	
Drum Diameter	15½"	15½"	16"
Drum Width	10½"	9⅞"	22¼"
Lagging Rod Diameter	4"	21½"	none
Rope Diameter	7/8"	¾"	7/8"
Layer Capacity	42'	65'	98'
No. of Layers	9	5	8
Spooling Capacity	550'	370'	1200'

\*Must have lagging — can't be used as bare drum.

## SWING CLUTCHES (Main Drive Shaft)

CLUTCH SHAFT: Manitowoc, two (2) piece replaceable clutch friction disc. Roller bearing clutch cams. Anti-friction bearing mounted bevel pinions and clutch components.

SWING SPEED: 0 to 5.0 rpm

## HYDRAULIC TRAVEL SYSTEM

Hydraulic Travel System consists of:

- Two stage hydraulic pump mounted on front of power plant, with each stage providing a rated flow of 80 gal. per min. @ 2000 rpm.
- Hydraulic control valves in back of operator, one valve for each crawler.
- Hydraulic motor mounted in each crawler frame, with two speed hydraulic control valve.

Each stage powers one (1) crawler through control system and each hydraulic valve will control hydraulic oil to crawlers from 0 to maximum GPM depending on travel control lever position.

The hydraulic motor in each crawler is a two (2) stage motor. Hydraulic fluid to the motor is routed through a diverting valve providing two travel speeds: total flow through one (1) stage for high speed, or total flow through each of two (2) stages for low speed. Shifting is air controlled.

## TRAVEL SPEEDS

	HIGH SPEED	LOW SPEED
Cummins HS-672-B	.81 mph	.42 mph
GM 6-71 (optional)	.96 mph	.50 mph

## INDEPENDENT BOOM HOIST

DRUM: Double

CLUTCH SHAFT: Manitowoc, two (2) piece replaceable clutch disc, driven from the rear drum gear. Roller bearing clutch cams. Anti-friction bearing mounted bevel pinions and clutch components.

BRAKE: Automatic spring applied, air released.

AUXILIARY BOOM HOIST BRAKE: Manually controlled.

WORM GEAR & WHEEL: Bronze, fully enclosed, lubricated by circulating oil.

BEARINGS: Anti-friction.

## BOOM STOPS

Automatic B.H. Clutch Throwout (air) with exclusive\* Manitowoc Telescopic Air Cushioned Boom Stop.

## LIFTCRANE BOOM (NO. 16)

The No. 16 Boom is standard on the 2900WC and is of tubular construction with pin joints.

BUTT SECTION: 16' long

Lower End — 45¾" wide

Upper End — 48¾" wide x 38¼" deep

INSERT "SHALLOW": 10' long

Both ends — 48¾" wide x 38¼" deep

May be fitted with a jib backstay lug and a pendant attachment lug.

NOTE: The 10' long shallow insert is used only between the boom butt and upper butt section, and between the boom butt and boom top.

UPPER BUTT SECTION (tapered): 15' long

Lower End — 48¾" wide x 38¼" deep

Upper End — 48¾" wide x 48¾" deep

May be fitted with jib backstay anchor lugs and pendant attachment lugs.

INSERT "DEEP": 10' long

Both Ends — 48¾" wide x 48¾" deep

May be fitted with jib backstay anchor lugs.

INSERT "DEEP": 20' long

Both Ends — 48¾" wide x 48¾" deep

May be fitted with pendant attachment lug or jib backstay anchor lugs.

LOWER TOP SECTION: 15' long

Lower End — 48¾" wide x 48¾" deep

Upper End — 48¾" wide x 38¼" deep

BOOM TOP SECTION: 25' long

Lower End — 48¾" wide x 38¼" deep

Open throat with an upper and lower point, with wire rope dead end anchors for the load line as an integral part of the boom point.

Lower Boom Point includes three (3) tapered roller bearing mounted 24" OD sheaves.

Upper Boom Point consisting of one (1) straight roller bearings mounted, wide flange 27" OD sheave.

NOTE: The upper boom point may have a two (2) straight roller bearings sheave arrangement in place of the single sheave.

## EQUALIZER

The equalizer is fitted with 12" OD bushed sheaves. There is an additional sheave mounted ahead of the equalizer that may be used for handling light loads while setting up the boom, or other light work when the machine is rigged with the boom butt only.

Wire top guides with 12" OD sheaves and rollers are used to guide the hoist wire ropes.

The nine foot retractable gantry is fitted with 12" OD, bushing mounted sheaves. Gantry has pendant type back hitch and hold down links for traveling with gantry down.

## CRAWLER DATA

Crawler Length — over ends	20'
⊕ Rotation over Drive Sprocket	10'
⊕ Rotation over Front Roller	10'
Tread Width (36" optional)	30"
Pitch	10¾" (both)
Number of pads per crawler	96
Intermediate Double Flange Rollers Required per Crawler	11
Roller Diameter	12" Dia.
Width of Face (contact area)	3"
Roller Shaft Diameter (stationary)	4" Dia.
Front Double Flange Roller Diameter	33¾" Dia.
Width of Face (contact area)	3"
Roller Shaft Diameter (stationary)	6¼" Dia.
Drive Sprocket Diameter	40-3/16" Dia.
Width of Face (contact area)	4"
Sprocket Shaft Diameter (stationary)	6¼" Dia.
Bearings are Bronze Bushed with center grease pocket.	



# LIFTING CAPACITIES

## 2900WC LIFTCRANE, CRAWLERS RETRACTED AND EXTENDED

### NO. 16 BOOM 36,000 LBS. OF COUNTERWEIGHT

Capacities are based on strength of structural components and do not exceed 75% of tipping with boom across crawlers and machine on firm, level ground. Ratings indicated by "\*" represent boom positions which, without load, provide less than standard backward stability. Weight of load block, hook, weight ball, slings, etc., is considered part of load.

Machine is to be equipped with 20'-0" extendible width crawlers, 30" treads, 9' retractable gantry, 10 part boom hoist rigging, 1 3/8" pendant bridles, 18,000 lb. first counterweight and 18,000

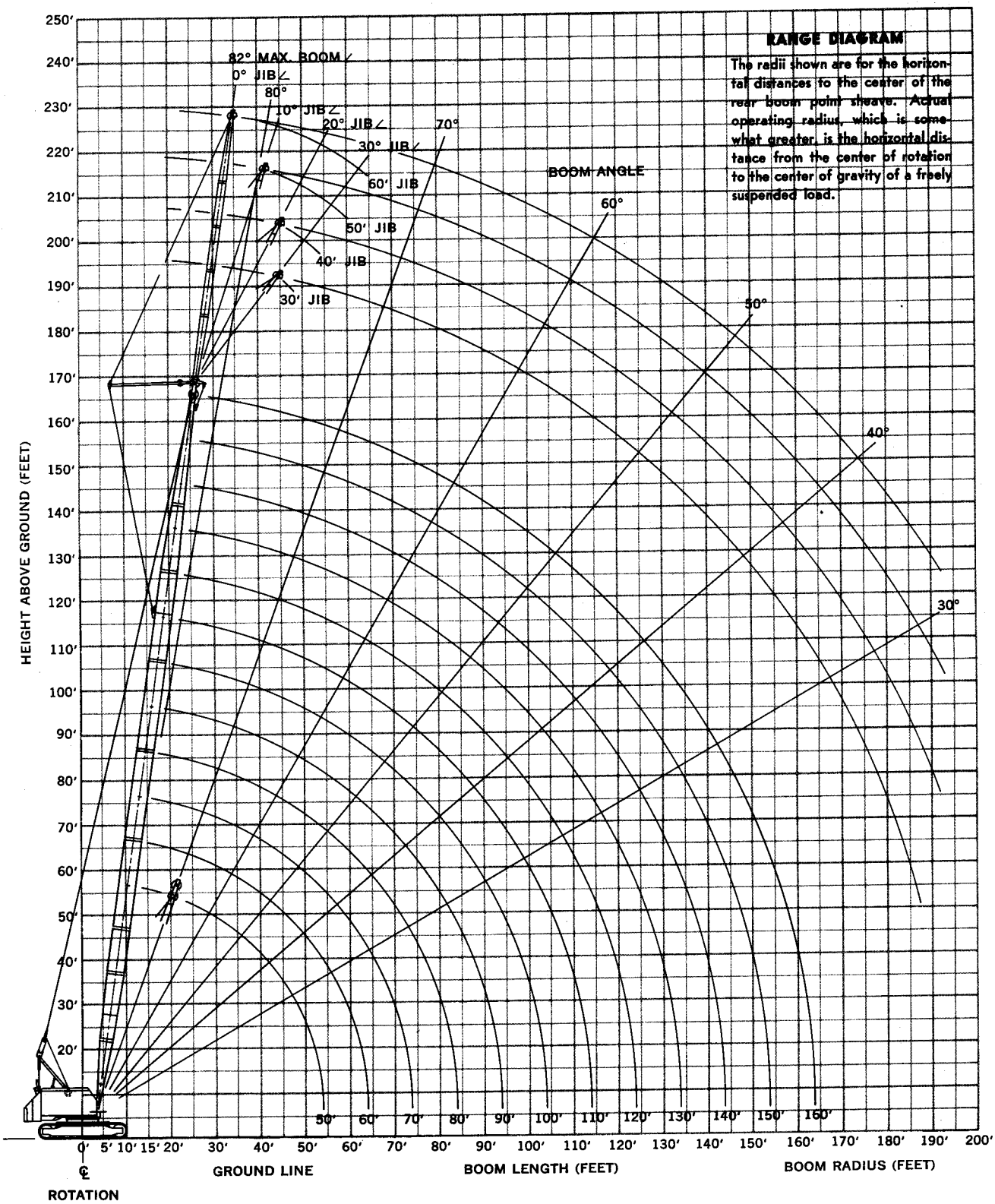
lb. second counterweight.

Maximum boom length is 160' plus 60' of No. 124 jib. When 30', 40', 50' or 60' of jib is attached, deduct 1800 pounds, 2,050 pounds, 2,300 pounds and 2,500 pounds respectively, from capacities.

The radii shown below are the horizontal distances from center of rotation to center of the lower boom point. Add 12" to boom point radius for radius of sheaves when using single line over lower boom point.

Boom Length	Rad. in Feet	Boom Angle	Capacity Crawlers Retracted†	Pt./Line	Capacity Crawlers Extended‡	Pt./Line	Boom Length	Rad. in Feet	Boom Angle	Capacity Crawlers Retracted†	Pt./Line	Capacity Crawlers Extended‡	Pt./Line
40	12	77.2	104,800*	6	130,000	7	11	19	81.7	51,000	3	69,200	4
	15	72.8	73,700*	5	120,000	7		20	81.2	47,400	3	69,200	4
	18	68.2	56,600*	4	112,200	7		24	79.1	36,800	3	67,400	4
	20	65.1	49,000*	3	92,700	6		28	77.0	29,800	2	52,900	4
	24	58.6	38,400*	3	68,500	4		32	74.8	24,800	2	43,300	3
	28	51.6	31,400*	2	54,100	4		36	72.6	21,200	2	36,500	3
50	32	43.9	26,500	2	44,600	3	40	70.3	18,300	2	31,400	2	
	36	34.8	22,800	2	37,900	3	44	67.9	13,400	1	22,900	2	
	40	23.0	20,000	2	29,800	2	48	65.4	10,200	1	17,700	2	
	15	76.3	73,500*	5	120,000	7	52	62.8	8,100	1	14,200	1	
	18	72.7	56,600*	4	112,200	7	56	60.1	6,500	1	11,600	1	
	20	70.3	48,000*	3	92,600	6	60	57.9	5,200	1	9,700	1	
60	24	65.4	38,000*	3	68,400	4	64	55.8	4,300	1	8,200	1	
	28	60.2	31,200*	2	54,000	4	68	53.9	3,600	1	6,900	1	
	32	54.8	26,200	2	44,400	3	72	52.2	3,000	1	6,200	1	
	36	49.0	22,600	2	37,700	3	76	50.7	2,500	1	5,700	1	
	40	42.6	19,700	2	32,800	2	80	49.3	2,100	1	5,200	1	
	50	20.5	14,800	1	22,800	2	84	48.0	1,800	1	4,800	1	
70	15	78.6	73,100*	5	120,000	7	88	46.8	1,500	1	4,500	1	
	18	75.7	56,100*	4	111,800	7	92	45.7	1,300	1	4,200	1	
	20	73.7	48,400*	3	92,400	6	96	44.7	1,100	1	3,900	1	
	24	69.7	37,800*	3	68,200	4	100	43.8	900	1	3,600	1	
	28	65.6	30,900*	2	53,800	4	104	43.0	800	1	3,300	1	
	32	61.3	25,900	2	44,200	3	108	42.3	700	1	3,000	1	
80	36	56.8	22,300	2	37,400	3	112	41.7	600	1	2,700	1	
	40	52.1	19,400	2	32,300	2	116	41.1	500	1	2,400	1	
	50	38.7	14,500	1	23,900	2	120	40.6	400	1	2,100	1	
	60	18.7	11,400	1	17,900	2	124	40.1	300	1	1,800	1	
	15	80.3	73,100*	5	109,500	7	128	39.7	250	1	1,500	1	
	18	77.8	56,000*	4	101,000	6	132	39.3	200	1	1,200	1	
90	20	76.1	48,300*	3	92,300	6	136	39.0	150	1	900	1	
	24	72.7	37,700*	3	68,100	4	140	38.7	100	1	600	1	
	28	69.2	30,700*	2	53,600	4	144	38.4	75	1	450	1	
	32	65.7	25,800	2	44,100	3	148	38.1	50	1	300	1	
	36	62.0	22,100	2	37,300	3	152	37.8	30	1	150	1	
	40	58.3	19,200	2	32,200	2	156	37.5	15	1	75	1	
100	50	48.0	14,300	1	23,700	2	160	37.2	10	1	50	1	
	60	35.7	11,200	1	18,600	2	164	36.9	5	1	25	1	
	70	17.3	9,000	1	14,500	1	168	36.6	3	1	15	1	
	15	81.5	72,800*	5	103,800	6	172	36.3	2	1	10	1	
	18	79.3	55,700*	4	97,300	6	176	36.0	1	1	5	1	
	20	77.9	48,000*	3	92,100	6	180	35.7	1	1	5	1	
110	24	74.9	37,300*	3	67,800	4	184	35.4	1	1	5	1	
	28	71.9	30,300*	2	53,400	4	188	35.1	1	1	5	1	
	32	68.9	25,400	2	43,800	3	192	34.8	1	1	5	1	
	36	65.8	21,700	2	37,000	3	196	34.5	1	1	5	1	
	40	62.6	18,900	2	31,900	2	200	34.2	1	1	5	1	
	50	54.2	14,000	1	23,400	2	204	33.9	1	1	5	1	
120	60	44.7	10,800	1	18,200	2	208	33.6	1	1	5	1	
	70	33.3	8,700	1	14,700	1	212	33.3	1	1	5	1	
	80	16.2	7,100	1	11,700	1	216	33.0	1	1	5	1	
	16	81.8	66,000	5	88,000	6	220	32.7	1	1	5	1	
	18	80.5	55,500	4	83,000	6	224	32.4	1	1	5	1	
	20	79.2	47,800	3	78,600	6	228	32.1	1	1	5	1	
130	24	76.6	37,200*	3	67,700	4	232	31.8	1	1	5	1	
	28	74.0	30,200*	2	53,000	4	236	31.5	1	1	5	1	
	32	71.3	25,300	2	43,300	3	240	31.2	1	1	5	1	
	36	68.6	21,600	2	38,000	3	244	30.9	1	1	5	1	
	40	65.8	18,800	2	33,000	2	248	30.6	1	1	5	1	
	50	58.6	13,900	1	23,300	2	252	30.3	1	1	5	1	
140	60	50.8	10,700	1	18,100	2	256	30.0	1	1	5	1	
	70	42.0	8,500	1	14,600	1	260	29.7	1	1	5	1	
	80	31.4	6,900	1	12,100	1	264	29.4	1	1	5	1	
	18	81.5	55,300	4	86,000	5	268	29.1	1	1	5	1	
	20	80.3	47,600	3	83,300	5	272	28.8	1	1	5	1	
	24	78.0	37,000	3	67,600	4	276	28.5	1	1	5	1	
150	28	75.6	30,000	2	53,100	4	280	28.2	1	1	5	1	
	32	73.2	25,000	2	43,500	3	284	27.9	1	1	5	1	
	36	70.8	21,300	2	36,600	3	288	27.6	1	1	5	1	
	40	68.4	18,500	2	31,500	2	292	27.3	1	1	5	1	
	50	62.1	13,600	1	23,100	2	296	27.0	1	1	5	1	
	60	55.4	10,400	1	17,900	2	300	26.7	1	1	5	1	
160	70	48.1	8,300	1	14,400	1	304	26.4	1	1	5	1	
	80	39.8	6,700	1	11,800	1	308	26.1	1	1	5	1	
	90	29.7	5,400	1	9,900	1	312	25.8	1	1	5	1	
	100	49.8	3,300	1	7,300	1	316	25.5	1	1	5	1	
	110	44.6	2,500	1	6,100	1	320	25.2	1	1	5	1	
	120	38.8	1,900	1	5,100	1	324	24.9	1	1	5	1	
170	130	32.3	1,500	1	4,300	1	328	24.6	1	1	5	1	
	140	24.2	1,000	1	3,600	1	332	24.3	1	1	5	1	
	28	81.1	28,600	2	42,900	3	336	24.0	1	1	5	1	
	32	79.6	23,700	2	41,300	3	340	23.7	1	1	5	1	
	36	78.2	20,000	2	35,500	3	344	23.4	1	1	5	1	
	40	76.7	17,100	1	30,300	2	348	23.1	1	1	5	1	
180	50	73.0	12,200	1	21,800	2	352	22.8	1	1	5	1	
	60	69.2	9,000	1	16,600	1	356	22.5	1	1	5	1	
	70	65.3	6,800	1	13,000	1	360	22.2	1	1	5	1	
	80	61.3	5,200	1	10,500	1	364	21.9	1	1	5	1	
	90	57.1	4,000	1	8,600	1	368	21.6	1	1	5	1	
	100	52.8	3,000	1	7,100	1	372	21.3	1	1	5	1	
190	110	48.1	2,300	1	5,800	1	376	21.0	1	1	5	1	
	120	43.1	1,600	1	4,900	1	380	20.7	1	1	5	1	
	130	37.6	1,200	1	4,000	1	384	20.4	1	1	5	1	
	140	31.2	900	1	3,300	1	388	20.1	1	1	5	1	
	150	23.4	700	1	2,700	1	392	19.8	1	1	5	1	

Drwg. #4794, 1-11-65  
 †Drwg. #5151, 1-4-65  
 ‡Drwg. #5150, 1-4-65



Because of a program of continuing improvements, Manitowoc Engineering Co. reserves the right to change this description at any time, without notice.

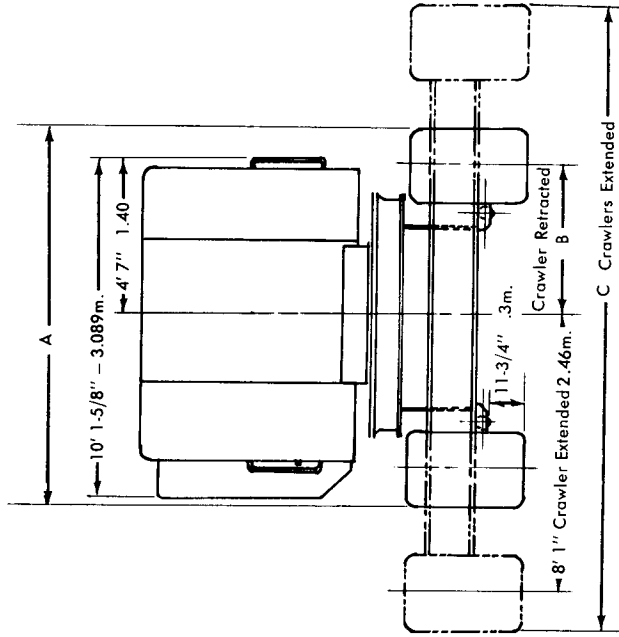
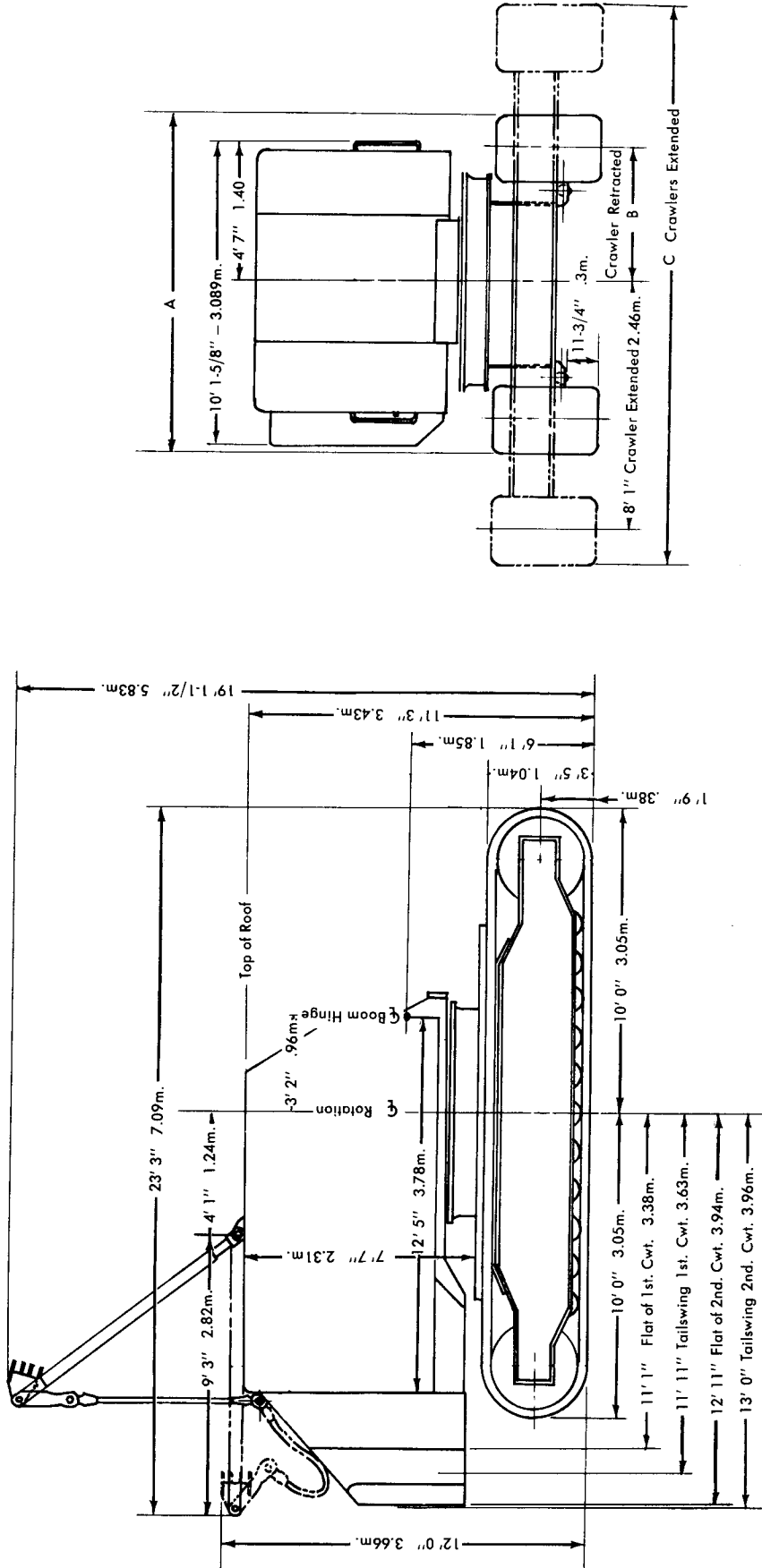


**MANITOWOC ENGINEERING CO.**  
 (A division of The Manitowoc Company, Inc.)  
 Manitowoc, Wisconsin 54220

MANITOWOC ENGINEERING CO.

A Division of The Manitowoc Company, Inc.

Manitowoc, Wisconsin



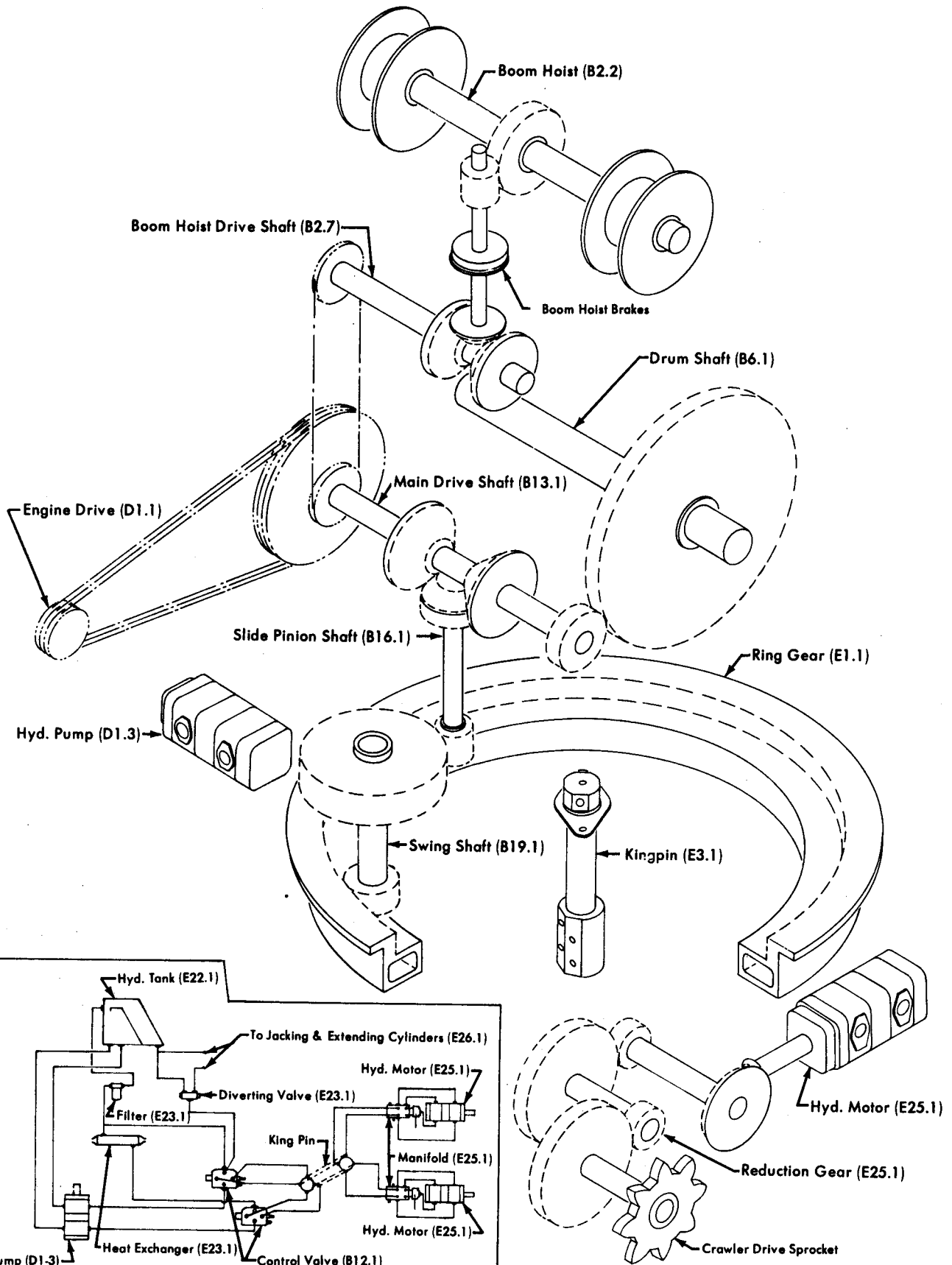
Dimension	30" Treads	36" Treads
A	11' 5" - 3.48m.	12' 5" - 3.78m.
B	4' 5 1/2" - 1.36m.	4' 8 1/2" - 1.44m.
C	18' 8" - 5.69m.	19' 2" - 5.84m.

7-26-71  
9-14-67  
Date 8-25-67

**MANITOWOC ENGINEERING CO.**

A Division of The Manitowoc Company, Inc.

Manitowoc, Wisconsin



Schematic - Crawler Drive

MODEL 2900WC

NOTE: The numbers following the descriptions above are the Parts Manual page numbers.

O-347

**POWER TRAIN**





**DRUM AND LAGGING CHART** \_\_\_\_\_ **2900WC**

APPLICATION	DRUM	PART NUMBER	DIA.	WIDTH	TYPE OF DRUM OR LAGGING	WIRE ROPE SIZES
<b>LIFTCRANE</b>						
Hoist	Rear	33854	16"	22-1/8"	Bare	3/4"
Whip	Left Front	180205	21-1/2"	9-1/8"	Plain	3/4"
Auxiliary	Right Front	181956	14"	10-1/2"	Plain	3/4"
<b>CLAMSHELL</b>						
Closing	Right Front	31612	20"	10-1/2"	Grooved	3/4"
Holding	Left Front	23041	21-1/2"	9-1/8"	Grooved	3/4"
Auxiliary	Rear	33854	16"	22-1/8"	Bare	7/8"
<b>DRAGLINE – HINGED FAIRLEAD</b>						
Drag	Right Front	41660	17-5/8"	10-1/2"	Grooved	7/8"
Hoist	Left Front	23046	19"	9-1/8"	Grooved	3/4"
Auxiliary	Rear	33854	16"	22-1/8"	Bare	7/8"
<b>PILEDRIVER</b>						
Hoist	Rear	33854	16"	22-1/8"	Bare	7/8"
Whip	Left Front	180205	21-1/2"	9-1/8"	Plain	3/4"
Auxiliary	Right Front	181956	14"	10-1/2"	Plain	3/4"

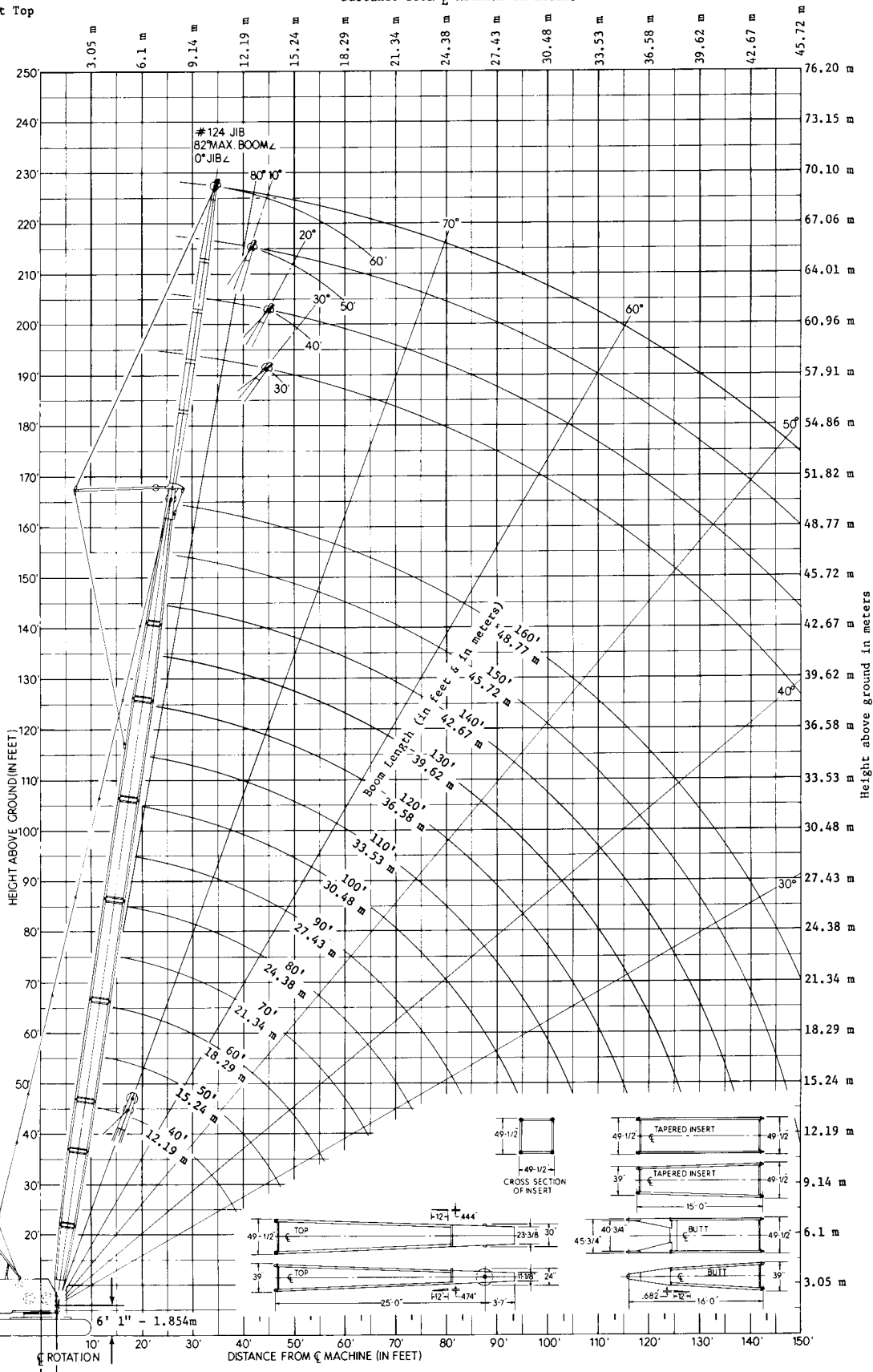
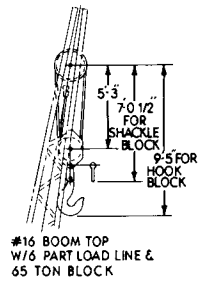
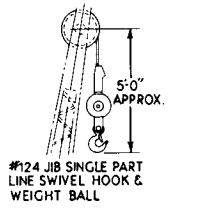
# MANITOWOC ENGINEERING CO.

A Division of The Manitowoc Company, Inc.

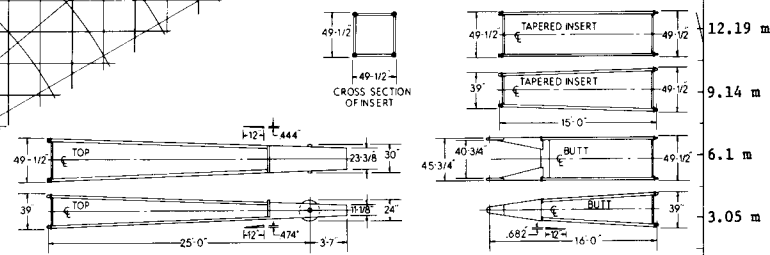
Manitowoc, Wisconsin

MAXIMUM BOOM ANGLE  
82° For No. 16 Boom W/Open Throat Top

Distance from  $\zeta$  machine in meters



- NOTE 1: This drawing is intended only as a guide to assist in job planning.
- NOTE 2: For planning a lift, this drawing is to be used in conjunction with appropriate-  
A. Capacity Charts. C. Load Line Specifications. E. Outline Dimensions.  
B. Range Chart. D. Rigging Drawing.
- NOTE 3: For planning lifts where clearances are limited and accuracy is desired, a detailed layout should be prepared.
- NOTE 4: Distance of MANITOWOC load block to boom point based on 3° fleet angle or physical limitations.
- NOTE 5: When equipped with hoist line limit switch, contact factory for load block to boom point minimum distance.



13' 0" - 3.962m  
TAILSWING

6' 1" - 1.854m  
ROTATION

3' 2" - .965m

DO NOT SCALE THIS DRAWING

Larger Size Diagrams Available - Contact Dealer.

11-20-72

49707

RANGE DIAGRAM-M2900WC-No.16 BOOM-124 JIB



# LIFTCRANE CAPACITIES

MEETS ANSI B30.5  
 REQUIREMENTS EXCEPT  
 WHERE NOTED WITH B

# 2900WC CRAWLER

## BOOM NO. 16 WITH OPEN THROAT TOP 20'0" CRAWLERS — 36,000 LB. COUNTERWEIGHT

**LIFTING CAPACITIES:** Capacities for various boom lengths and operating radii may be based on per cent of tipping, strength of structural components, operating speeds and other factors. Capacities are for freely suspended loads and do not exceed 75% of static tipping loads. Capacities based on structural competence are shown by shaded areas.

Capacities indicated by "B" represent boom positions which, without load, provide less than required ANSI B30.5 backward stability.

Capacities are shown in pounds. Weight of jib, (see chart A), all load blocks, hooks, weight ball, slings, hoist lines beneath boom and jib point sheaves, etc., is considered part of the main boom load. Boom is not to be lowered beyond radii where combined weights are greater than rated capacity. Where no capacity is shown, operation is not intended or approved.

**OPERATING CONDITIONS:** Machine to operate in a level position on a firm surface with gantry in working position and under conditions referred to in rigging drawing No. 49598 and wire rope specification chart No. 6445-A.

Crane operator judgment must be used to allow for dynamic load effects of swinging, hoisting or lowering, travel as well as adverse operating conditions or physical machine depreciation.

**OPERATING RADIUS:** Operating radius is the horizontal distance from the axis of rotation to the center of vertical hoist line or load block with the load freely suspended. Add 11" to boom point radius for radius of sheave when using single part hoist line.

Boom angle is the angle between horizontal and centerline of boom butt and inserts and is an indication of operating radius. In all cases, operating radius shall govern capacity.

**BOOM POINT ELEVATION:** Boom point elevation, in feet, is the vertical distance from ground level to centerline of boom point shaft.

**MACHINE EQUIPMENT:** Machine equipped with 20'0" extendible crawlers, 30" or 36" treads, 9' retractable gantry, 10 part boom hoist reeving, two 1-3/8" pendants, 1st cwt. 18,000 lbs., 2nd cwt. 18,000 lbs. Total counterweight 36,000 pounds.

HOIST REEVING FOR MAIN LOAD BLOCK						
No. Parts of Line	1	2	3	4	5	6
Max. Load — Lbs.	18,400	36,800	55,200	73,600	92,000	110,400
No. Parts of Line	7	8				
Max. Load — Lbs.	123,500	140,000				

LOAD AND WHIP LINE SPECIFICATIONS	
LOAD LINE: 3/4" — 6x25 Bright Super Tensile, Monitor AAA, Regular Lay, IWRC. Minimum Breaking Strength 32.3 Ton.	
WHIP LINE: 3/4" — 6x25 Filler Wire, Improved Plow Steel, Regular Lay, IWRC. Minimum Breaking Strength 25.6 Ton. Maximum Load — 13,000 lbs. per Line.	

MAXIMUM BOOM AND JIB LENGTHS LIFTED UNASSISTED					
OVER FRONT OF BLOCKED CRAWLERS		OVER SIDE OF EXTENDED CRAWLERS		OVER SIDE OF RETRACTED CRAWLERS	
Boom Lgth.	Jib No. 124	Boom Lgth.	Jib No. 124	Boom Lgth.	Jib No. 124
160'	—	160'	—	140'	—
160'	60'	150'	60'	130'	—
				120'	40'
				110'	60'

Load block, hook and weight ball on ground at start.

(A) DEDUCT FROM CAPACITIES WHEN JIB IS ATTACHED	
Jib Length	Jib No. 124
30'	1,800 Lb.
40'	2,050 Lb.
50'	2,300 Lb.
60'	2,500 Lb.

Boom Lgth.: Feet	Oper. Rad.: Feet	Bm. Ang.: Deg.	Boom Point: Elev.	Capacity: Crawlers Retracted	Capacity: Crawlers Extended	Boom Lgth.: Feet	Oper. Rad.: Feet	Bm. Ang.: Deg.	Boom Point: Elev.	Capacity: Crawlers Retracted	Capacity: Crawlers Extended	Boom Lgth.: Feet	Oper. Rad.: Feet	Bm. Ang.: Deg.	Boom Point: Elev.	Capacity: Crawlers Retracted	Capacity: Crawlers Extended
40	12	77.6	46.1	106,600B	140,000	60	13	80.7	66.3	93,000B	131,600	80	38	60.6	67.9	20,600	25,800
	13	75.1	45.9	93,500B	132,000		14	79.8	66.1	82,600B	114,600		40	58.7	66.8	19,300	24,100
	14	74.7	45.6	83,200B	115,000		15	78.8	65.9	74,300B	101,300		45	53.9	63.4	16,500	20,500
	15	73.2	45.3	74,900B	101,800		16	77.9	65.7	67,500B	90,800		50	48.7	59.4	14,300	17,800
	16	71.8	45.0	68,000B	91,200		17	76.9	65.5	61,800B	82,200		55	43.1	54.6	12,500	15,600
	17	70.3	44.7	62,300B	82,600		18	75.9	65.2	56,900B	75,000		60	36.8	48.6	11,100	13,900
	18	68.8	44.3	57,400B	75,500		19	75.0	65.0	52,700B	68,900		65	29.4	41.0	9,900	12,400
	19	67.3	43.9	53,300B	69,400		20	74.0	64.7	49,000B	63,700		70	19.7	30.0	8,900	11,200
	20	65.8	43.4	49,600B	64,200		22	72.0	64.1	43,000B	55,300						
	22	62.7	42.5	43,600B	55,800		24	70.0	63.4	38,200	48,800						
	24	59.5	41.4	38,800B	49,300		26	68.0	62.6	34,300	43,600						
	26	56.2	40.1	34,900B	44,100		28	66.0	61.8	31,100	39,300						
	28	52.7	38.7	31,700B	39,800		30	63.9	60.8	28,400	35,700						
	30	49.1	37.1	29,000	36,300		32	61.8	59.8	26,100	32,700						
	32	45.3	35.2	26,700	33,300		34	59.6	58.7	24,100	30,100						
	34	41.2	33.1	24,700	30,700		36	57.4	57.5	22,400	27,900						
36	36.8	30.6	23,000	28,500	38	55.2	56.1	20,800	26,000								
38	31.8	27.7	21,400	26,500	40	52.9	54.7	19,500	24,200								
40	26.1	24.1	20,100	24,800	45	46.7	50.5	16,500	20,700								
					50	39.8	45.1	14,500	18,000								
60	12	80.0	56.3	106,300B	140,000	55	31.8	38.2	12,700	15,800	70	14	81.2	76.2	82,500B	114,500	
	13	78.9	56.1	93,200B	131,800	60	21.3	28.2	11,300	14,100		15	80.4	76.1	74,200B	101,200	
	14	77.7	55.8	82,900B	114,800							16	79.6	75.9	67,300B	90,700	
	15	76.6	55.7	74,600B	101,600							17	78.8	75.7	61,600B	82,000	
	16	75.4	55.4	67,800B	91,000							18	77.9	75.5	56,700B	74,900	
	17	74.3	55.2	62,000B	82,400							19	77.1	75.3	52,500B	68,800	
	18	73.1	54.9	57,200B	75,200							20	76.3	75.0	48,900	63,600	
	19	71.9	54.5	53,000B	69,200							22	74.6	74.5	42,800	55,200	
	20	70.7	54.2	49,300B	64,200							24	72.9	73.9	38,100	48,600	
	22	68.3	53.5	43,300B	55,600							26	71.2	73.3	34,200	43,400	
	24	65.9	52.6	38,500B	49,100							19	77.1	75.3	52,500B	68,800	
	26	63.4	51.7	34,600	43,800							20	76.3	75.0	48,900	63,600	
	28	60.9	50.6	31,400	39,600							22	74.6	74.5	42,800	55,200	
	30	58.3	49.4	28,700	36,000							24	72.9	73.9	38,100	48,600	
	32	55.6	48.1	26,400	33,000							26	71.2	73.3	34,200	43,400	
	34	52.8	46.7	24,400	30,400							28	69.5	72.6	30,900	39,100	
36	49.9	45.1	22,700	28,200						30	67.8	71.8	28,200	35,600			
38	46.9	43.3	21,100	26,300						32	66.0	70.9	25,900	32,600			
40	43.8	41.3	19,800	24,500						34	64.3	70.0	23,900	30,000			
45	34.9	35.2	17,000	21,000						36	62.5	69.0	22,200	27,700			
50	23.3	26.3	14,800	18,300													

Capacities continued on reverse side.

# SEE CONDITIONS ON REVERSE SIDE

Boom Lgth.: Foot	Oper. Rad.: Foot	Bm. Ang.: Deg.	Boom Point: Elev.	Capacity: Crawlers Retracted	Capacity: Crawlers Extended
17	81.3	96.0	61,200	81,700	
18	80.6	95.8	56,300	74,500	
19	80.0	95.7	52,100	68,400	
20	79.3	95.5	48,400	63,200	
22	78.1	95.1	42,400	54,800	
24	76.8	94.6	37,600	48,200	
26	75.5	94.2	33,700	43,000	
28	74.2	93.6	30,500	38,700	
30	72.9	93.0	27,800	35,100	
32	71.5	92.4	25,400	32,100	
34	70.2	91.7	23,400	29,500	
36	68.9	90.9	21,700	27,300	
38	67.5	90.1	20,200	25,300	
40	66.1	89.3	18,800	23,600	
45	62.6	86.9	16,000	20,100	
50	59.0	84.1	13,800	17,300	
55	55.3	80.9	12,000	15,200	
60	51.4	77.1	10,600	13,400	
65	47.2	72.8	9,400	11,900	
70	42.7	67.8	8,400	10,700	
75	37.9	61.9	7,500	9,600	
80	32.4	54.8	6,700	8,700	
85	25.9	45.9	6,100	7,900	
19	81.0	105.8	52,000	68,400	
20	80.4	105.6	48,400	63,200	
22	79.3	105.3	42,300	54,700	
24	78.1	104.9	37,500	48,200	
26	76.9	104.4	33,700	42,900	
28	75.8	104.0	30,400	38,700	
30	74.6	103.4	27,700	35,100	
32	73.4	102.9	25,400	32,100	
34	72.2	102.2	23,400	29,500	
36	71.0	101.6	21,600	27,300	
38	69.8	100.9	20,100	25,300	
40	68.6	100.1	18,700	23,600	
45	65.5	98.0	15,900	20,000	
50	62.4	95.5	13,700	17,300	
55	59.1	92.7	12,000	15,100	
60	55.8	89.6	10,500	13,300	
65	52.3	85.9	9,300	11,900	
70	48.6	81.8	8,300	10,600	
75	44.7	77.1	7,400	9,600	
80	40.5	71.6	6,700	8,700	
85	35.9	65.3	6,000	7,900	
90	30.7	57.6	5,400	7,100	
95	24.6	48.1	4,900	6,500	
22	80.2	115.5	42,100	54,600	
24	79.2	115.1	37,300	48,000	
26	78.1	114.7	33,400	42,700	
28	77.1	114.2	30,200	38,500	
30	76.0	113.8	27,500	34,900	
32	74.9	113.3	25,200	31,900	
34	73.9	112.7	23,200	29,300	
36	72.8	112.1	21,400	27,000	
38	71.7	111.5	19,900	25,100	
40	70.6	110.8	18,500	23,400	
45	67.9	108.9	15,700	19,800	
50	65.0	106.7	13,500	17,100	
55	62.2	104.2	11,700	14,900	
60	59.2	101.4	10,300	13,100	
65	56.1	98.2	9,100	11,700	
70	53.0	94.7	8,100	10,400	
75	49.7	90.7	7,200	9,300	
80	46.2	86.2	6,400	8,400	
85	42.5	81.1	5,800	7,600	
90	38.5	75.2	5,200	6,900	
95	34.2	68.4	4,700	6,300	
100	29.3	60.3	4,200	5,700	
105	23.4	50.2	3,800	5,200	

Boom Lgth.: Foot	Oper. Rad.: Foot	Bm. Ang.: Deg.	Boom Point: Elev.	Capacity: Crawlers Retracted	Capacity: Crawlers Extended
26	79.1	124.9	33,200	42,500	
28	78.2	124.5	29,900	38,200	
30	77.2	124.0	27,200	34,600	
32	76.2	123.6	24,900	31,600	
34	75.2	123.1	22,900	29,000	
36	74.3	122.5	21,100	26,800	
38	73.3	121.9	19,600	24,800	
40	72.3	121.3	18,200	23,100	
45	69.8	119.6	15,400	19,500	
50	67.2	117.6	13,200	16,800	
55	64.6	115.4	11,500	14,600	
60	62.0	112.9	10,000	12,900	
65	59.3	110.1	8,800	11,400	
70	56.5	106.9	7,800	10,100	
75	53.6	103.4	6,900	9,100	
80	50.6	99.5	6,200	8,200	
85	47.4	95.2	5,500	7,400	
90	44.1	90.3	4,900	6,600	
95	40.6	84.9	4,400	6,000	
100	36.8	78.6	3,900	5,500	
105	32.7	71.4	3,500	5,000	
110	28.0	62.9		4,500	
115	22.4	52.3		4,100	
28	79.1	134.7	29,700	38,000	
30	78.2	134.3	27,000	34,400	
32	77.3	133.8	24,700	31,400	
34	76.4	133.4	22,700	28,800	
36	75.5	132.9	20,900	26,600	
38	74.6	132.3	19,400	24,600	
40	73.7	131.8	18,000	22,900	
45	71.4	130.2	15,200	19,300	
50	69.1	128.4	13,000	16,600	
55	66.7	126.4	11,300	14,400	
60	64.3	124.1	9,800	12,600	
65	61.8	121.6	8,600	11,200	
70	59.3	118.7	7,600	9,900	
75	56.7	115.6	6,700	8,900	
80	54.1	112.2	6,000	7,900	
85	51.3	108.4	5,300	7,100	
90	48.5	104.1	4,700	6,400	
95	45.5	99.5	4,200	5,800	
100	42.3	94.3	3,700	5,200	
105	39.0	88.5	3,300	4,700	
110	35.4	81.9		4,300	
115	31.4	74.3		3,900	
120	26.9	65.3		3,500	
30	79.0	144.5	26,800	34,200	
32	78.2	144.1	24,400	31,200	
34	77.4	143.6	22,400	28,600	
36	76.5	143.2	20,700	26,300	
38	75.7	142.7	19,100	24,400	
40	74.9	142.2	17,800	22,600	
45	72.7	140.7	14,900	19,100	
50	70.6	139.1	12,700	16,300	
55	68.4	137.2	11,000	14,200	
60	66.2	135.1	9,500	12,400	
65	64.0	132.8	8,300	10,900	
70	61.7	130.2	7,300	9,700	
75	59.4	127.4	6,400	8,600	
80	57.0	124.3	5,700	7,700	
85	54.5	120.9	5,000	6,900	
90	52.0	117.2	4,400	6,200	
95	49.4	113.1	3,900	5,500	
100	46.6	108.6	3,400	5,000	
105	43.8	103.6	3,000	4,500	
110	40.7	98.1		4,000	
115	37.5	91.9		3,600	
120	34.0	85.0		3,200	
34	78.2	153.9	22,200	28,400	
36	77.4	153.4	20,500	26,100	
38	76.7	153.0	18,900	24,200	
40	75.9	152.5	17,600	22,400	
45	73.9	151.2	14,700	18,900	
50	71.9	149.6	12,500	16,100	
55	69.9	147.9	10,800	13,900	
60	67.9	146.0	9,300	12,200	
65	65.8	143.8	8,100	10,700	
70	63.7	141.5	7,100	9,400	
75	61.6	138.9	6,200	8,400	
80	59.4	136.1	5,500	7,500	
85	57.2	133.0	4,800	6,700	
90	54.9	129.6	4,200	6,000	
95	52.5	125.9	3,700	5,300	
100	50.1	121.9	3,200	4,800	
105	47.6	117.6		4,300	
110	45.0	112.8		3,800	
115	42.2	107.5		3,400	
120	39.3	101.7		3,000	

Boom Lgth.: Foot	Oper. Rad.: Foot	Bm. Ang.: Deg.	Boom Point: Elev.	Capacity: Crawlers Retracted	Capacity: Crawlers Extended
36	78.2	163.7	20,200	25,900	
38	77.5	163.2	18,700	23,900	
40	76.8	162.8	17,300	22,200	
45	74.9	161.5	14,500	18,600	
50	73.1	160.1	12,300	15,900	
55	71.2	158.5	10,500	13,700	
60	69.3	156.7	9,000	11,900	
65	67.4	154.7	7,800	10,400	
70	65.5	152.5	6,800	9,200	
75	63.5	150.1	5,900	8,100	
80	61.5	147.5	5,200	7,200	
85	59.5	144.7	4,500	6,400	
90	57.4	141.6	3,900	5,700	
95	55.2	138.3	3,400	5,100	
100	53.0	134.7		4,500	
105	50.8	130.8		4,000	
110	48.4	126.5		3,500	
115	46.0	121.9		3,100	

Combined From Charts:  
 No. 6723-B 2-9-76  
 No. 6723-C 2-23-76  
 No. 6445-A 1-29-75  
 No. 6720 12-5-75



# LIFTCRANE CAPACITIES

MEETS  
ANSI B30.5  
REQUIREMENTS

# 2900WC CRAWLER

## BOOM NO. 16 WITH OPEN THROAT TOP 20'0" CRAWLERS EXTENDED AND BLOCKED 36,000 LB. COUNTERWEIGHT

**LIFTING CAPACITIES:** Capacities for various boom lengths and operating radii may be based on per cent of tipping, strength of structural components, operating speeds and other factors. Capacities are for freely suspended loads and do not exceed 75% of static tipping loads. Capacities based on structural competence are shown by shaded areas.

Capacities are shown in pounds. Weight of jib, (see chart A), all load blocks, hooks, weight ball, slings, hoist lines beneath boom and jib point sheaves, etc., is considered part of the main boom load. Boom is not to be lowered beyond radii where combined weights are greater than rated capacity. Where no capacity is shown, operation is not intended or approved.

**OPERATING CONDITIONS:** Machine to operate in a level position on a firm surface with crawlers fully extended and blocked, and gantry in working position, and under conditions referred to in rigging drawing No. 49598 and wire rope specification chart No. 6445-A.

Crane operator judgment must be used to allow for dynamic load effects of swinging, hoisting or lowering, as well as adverse operating conditions or physical machine depreciation.

**OPERATING RADIUS:** Operating radius is the horizontal distance from the axis of rotation to the center of vertical hoist line or load block with the load freely suspended. Add 11" to boom point radius for radius of sheave when using single part hoist line.

Boom angle is the angle between horizontal and centerline of boom butt and inserts and is an indication of operating radius. In all cases, operating radius shall govern capacity.

**BOOM POINT ELEVATION:** Boom point elevation, in feet, is the vertical distance from ground level to centerline of boom point shaft.

**MACHINE EQUIPMENT:** Machine equipped with 20'0" ex-

tensible crawlers, 30" or 36" treads, 9' retractable gantry, 10 part boom hoist reeving, two 1-3/8" pendants, 1st cwt. 18,000 lbs., 2nd cwt. 18,000 lbs. Total counterweight 36,000 pounds.

HOIST REEVING FOR MAIN LOAD BLOCK						
No. Parts of Line	1	2	3	4	5	6
Max. Load - Lbs.	18,400	36,800	55,200	73,600	92,000	110,400
No. Parts of Line	7	8				
Max. Load - Lbs.	123,500	140,000				

LOAD AND WHIP LINE SPECIFICATIONS	
LOAD LINE:	3/4" - 6x25 Bright Super Tensile, Monitor AAA, Regular Lay, IWRC. Minimum Breaking Strength 32.3 Ton.
WHIP LINE:	3/4" - 6x25 Filler Wire, Improved Plow Steel, Regular Lay, IWRC. Minimum Breaking Strength 25.6 Ton. Maximum Load - 13,000 lbs. per Line.

MAXIMUM BOOM AND JIB LENGTHS LIFTED UNASSISTED			
OVER FRONT OF BLOCKED CRAWLERS		OVER SIDE OF EXTENDED CRAWLERS	
Boom Length	Jib No. 124	Boom Length	Jib No. 124
160'	---	160'	---
160'	60'	150'	60'

Load block, hook and weight ball on ground at start.

(A) DEDUCT FROM CAPACITIES WHEN JIB IS ATTACHED	
Jib Length	Jib No. 124
30'	1,800 Lb.
40'	2,050 Lb.
50'	2,300 Lb.
60'	2,500 Lb.

For jib capacities, consult jib chart.

Boom Lgth.: Feet	Oper. Rad.: Feet	Boom Angle: Deg.	Boom Point: Elev.	Capacity: Crawlers Extended	Boom Lgth.: Feet	Oper. Rad.: Feet	Boom Angle: Deg.	Boom Point: Elev.	Capacity: Crawlers Extended	Boom Lgth.: Feet	Oper. Rad.: Feet	Boom Angle: Deg.	Boom Point: Elev.	Capacity: Crawlers Extended					
40	12	77.6	46.1	140,000	50	34	52.8	46.7	40,800	70	28	69.5	72.6	53,700					
	13	76.1	45.9	135,800		36	49.9	45.1	37,700		30	67.8	71.8	48,500					
	14	74.7	45.6	129,500		38	46.9	43.3	34,900		32	66.0	70.9	44,100					
	15	73.2	45.3	125,500		40	43.8	41.3	32,600		34	64.3	70.0	40,400					
	16	71.8	45.0	122,800		45	34.9	35.2	27,700		36	62.5	69.0	37,300					
	17	70.3	44.7	119,100		50	23.3	26.3	23,900		80	38	60.6	67.9	34,500				
	18	68.8	44.3	112,700		60	13	80.7	66.3			134,600	40	58.7	66.8	32,100			
	19	67.3	43.9	102,000			14	79.8	66.1			125,500	45	53.9	63.4	27,300			
	20	65.8	43.4	93,100			15	78.8	65.9			122,900	50	48.7	59.4	23,600			
	22	62.7	42.5	79,200			16	77.9	65.7			120,300	55	43.1	54.6	20,700			
	50	24	59.5	41.4			68,800	17	76.9			65.5	117,300	60	36.8	48.6	18,400		
		26	56.2	40.1			60,700	70	18			75.9	65.2	112,400	65	29.4	41.0	16,500	
		28	52.7	38.7			54,300		19			75.0	65.0	101,700	70	19.7	30.0	14,900	
		30	49.1	37.1			49,100		20			74.0	64.7	92,700	90	15	81.6	86.2	109,500
		32	45.3	35.2			44,700		22			72.0	64.1	78,800		16	80.9	86.0	107,400
		60	34	41.2			33.1		41,100			24	70.0	63.4		68,400	17	80.2	85.9
36			36.8	30.6	37,900		80		26	68.0		62.6	60,300	18		79.4	85.7	103,500	
38			31.8	27.7	35,200				28	66.0		61.8	53,900	19		78.7	85.5	101,400	
40	26.1		24.1	31,600	30				63.9	60.8		48,600	80	20		78.0	85.3	92,500	
70	12		80.0	56.3	140,000			32	61.8	59.8		44,300		22		76.6	84.8	78,500	
	13		78.9	56.1	135,200			34	59.6	58.7		40,600		24		75.1	84.3	68,100	
	14		77.7	55.9	127,500			90	36	57.4	57.5	37,400		26		73.6	83.8	60,000	
	15		76.6	55.7	124,200	38			55.2	56.1	34,700	28		72.1		83.2	53,500		
	16	75.4	55.4	121,500	40	52.9			54.7	32,300	80	30		70.7		82.5	48,300		
	80	17	74.3	55.2	118,200	45	46.7		50.5	27,500		32		69.1		81.8	43,900		
		18	73.1	54.9	112,600	50	39.8		45.1	23,800		34		67.6		81.0	40,200		
		19	71.9	54.5	101,800	70	55		31.8	38.2		20,900		36		66.1	80.1	37,000	
20		70.7	54.2	92,900	60		21.3		28.2	18,600		38		64.5		79.2	34,300		
22		68.3	53.5	79,000	80		14		81.2	76.2		123,500		40		63.0	78.2	31,900	
90		24	65.9	52.6			68,600	15	80.4	76.1		121,600		45	58.9	75.4	27,100		
		26	63.4	51.7			60,500	16	79.6	75.9		119,100		50	54.7	72.2	23,400		
		28	60.9	50.6			54,100	17	78.8	75.7		116,400		55	50.2	68.3	20,500		
	30	58.3	49.4	48,900			18	77.9	75.5	112,300		60		45.4	63.8	18,100			
	32	55.6	48.1	44,500			90	19	77.1	75.3		101,600		65	40.2	58.4	16,200		
	0	20	70.7	54.2		92,900		20	76.3	75.0		92,600	70	34.4	51.8	14,600			
		22	68.3	53.5		79,000		22	74.6	74.5		78,700	75	27.5	43.5	13,200			
		0	24	65.9	52.6	68,600		24	72.9	73.9		68,200	80	18.5	31.7	12,100			
26			63.4	51.7	60,500	26		71.2	73.3	60,200									

Capacities continued on reverse side.

# SEE CONDITIONS ON REVERSE SIDE

Boom Lgth.: Feet	Oper. Rad.: Feet	Boom Angle: Deg.	Boom Point: Elev.	Capacity: Crawlers Extended	Boom Lgth.: Feet	Oper. Rad.: Feet	Boom Angle: Deg.	Boom Point: Elev.	Capacity: Crawlers Extended	Boom Lgth.: Feet	Oper. Rad.: Feet	Boom Angle: Deg.	Boom Point: Elev.	Capacity: Crawlers Extended
100	19	81.0	105.8	83,500	130	28	79.1	134.7	52,800	160	36	78.2	163.7	33,400
	20	80.4	105.6	82,300		30	78.2	134.3	47,500		38	77.5	163.2	32,800
	22	79.3	105.3	78,400		32	77.3	133.8	43,100		40	76.8	162.8	30,400
	24	78.1	104.9	67,900		34	76.4	133.4	39,400		45	74.9	161.5	25,500
	26	76.9	104.4	59,800		36	75.5	132.9	36,200		50	73.1	160.1	21,800
	28	75.8	104.0	53,400		38	74.6	132.3	33,500		55	71.2	158.5	18,900
	30	74.6	103.4	48,100		40	73.7	131.8	31,100		60	69.3	156.7	16,500
	32	73.4	102.9	43,700		45	71.4	130.2	26,200		65	67.4	154.7	14,600
	34	72.2	102.2	40,000		50	69.1	128.4	22,500		70	65.5	152.5	13,000
	36	71.0	101.6	36,800		55	66.7	126.4	19,600		75	63.5	150.1	11,600
110	38	69.8	100.9	34,100	140	60	64.3	124.1	17,200	170	80	61.5	147.5	10,400
	40	68.6	100.1	31,700		65	61.8	121.6	15,300		85	59.5	144.7	9,300
	45	65.5	98.0	26,800		70	59.3	118.7	13,700		90	57.4	141.6	8,400
	50	62.4	95.5	23,100		75	56.7	115.6	12,300		95	55.2	138.3	7,600
	55	59.1	92.7	20,200		80	54.1	112.2	11,100		100	53.0	134.7	6,900
	60	55.8	89.6	17,900		85	51.3	108.4	10,100		105	50.8	130.8	6,300
	65	52.3	85.9	16,000		90	48.5	104.1	9,200		110	48.4	126.5	5,700
	70	48.6	81.8	14,400		95	45.5	99.5	8,400		115	46.0	121.9	5,200
	75	44.7	77.1	13,000		100	42.3	94.3	7,700		120	43.5	116.8	4,700
	80	40.5	71.6	11,800		105	39.0	88.5	7,000		125	40.8	111.3	4,300
120	85	35.9	65.3	10,800	150	110	35.4	81.9	6,400	190	130	38.0	105.2	3,900
	90	30.7	57.6	9,900		115	31.4	74.3	5,900		135	35.0	98.5	3,500
	95	24.6	48.1	9,100		120	26.9	65.3	5,400		140	31.8	90.9	3,100
	22	80.2	115.5	72,200		30	79.0	144.5	47,300		32	78.2	144.1	42,900
	24	79.2	115.1	67,800		34	77.4	143.6	39,200		36	76.5	143.2	36,000
	26	78.1	114.7	59,700		38	75.7	142.7	33,200		40	74.9	142.2	30,800
	28	77.1	114.2	53,200		45	72.7	140.7	26,000		50	70.6	139.1	22,200
	30	76.0	113.8	47,900		55	68.8	137.2	19,300		60	66.2	135.1	17,000
	32	74.9	113.3	43,500		65	64.0	132.8	15,000		70	61.7	130.2	13,400
	34	73.9	112.7	39,800		75	59.4	127.4	12,000		80	57.0	124.3	10,900
36	72.8	112.1	36,600	85	54.5	120.9	9,800	90	52.0	117.2	8,900			
38	71.7	111.5	33,900	95	49.4	113.1	8,100	100	46.6	108.6	7,400			
40	70.6	110.8	31,500	105	43.8	103.6	6,800	110	40.7	98.1	6,200			
45	67.9	108.9	26,600	115	37.5	91.9	5,700	120	34.0	85.0	5,200			
50	65.0	106.7	22,900	125	30.2	77.0	4,700	130	25.9	67.7	4,300			
55	62.2	104.2	20,000	135	20.8	56.1	4,000	34	78.2	153.9	39,000			
60	59.2	101.4	17,700	36	77.4	153.4	35,800	38	76.7	153.0	33,000			
65	56.1	98.2	15,800	40	75.9	152.5	30,600	45	73.9	151.2	25,800			
70	53.0	94.7	14,100	50	71.9	149.6	22,000	55	69.9	147.9	19,100			
75	49.7	90.7	12,800	60	67.9	146.0	16,800	65	65.8	143.8	14,800			
80	46.2	86.2	11,600	70	63.7	141.5	13,200	75	61.6	138.9	11,800			
85	42.5	81.1	10,600	80	59.4	136.1	10,600	85	57.2	133.0	9,600			
90	38.5	75.2	9,600	90	54.9	129.6	8,700	95	52.5	125.9	7,900			
95	34.2	68.4	8,800	100	50.1	121.9	7,200	105	47.6	117.6	6,500			
100	29.3	60.3	8,100	110	45.0	112.8	6,000	115	42.2	107.5	5,400			
105	23.4	50.2	7,500	120	39.3	101.7	5,000	125	36.2	95.3	4,500			
26	79.1	124.9	59,500	34	78.2	153.9	39,000	125	36.2	95.3	4,500			
28	78.2	124.5	53,000	36	77.4	153.4	35,800	130	32.9	88.0	4,100			
30	77.2	124.0	47,700	38	76.7	153.0	33,000	135	29.2	79.7	3,800			
32	76.2	123.6	43,300	40	75.9	152.5	30,600	140	25.0	69.9	3,400			
34	75.2	123.1	39,600	45	73.9	151.2	25,800							
36	74.3	122.5	36,400	50	71.9	149.6	22,000							
38	73.3	121.9	33,700	55	69.9	147.9	19,100							
40	72.3	121.3	31,300	60	67.9	146.0	16,800							
45	69.8	119.6	26,400	65	65.8	143.8	14,800							
50	67.2	117.6	22,700	70	63.7	141.5	13,200							
55	64.6	115.4	19,800	75	61.6	138.9	11,800							
60	62.0	112.9	17,400	80	59.4	136.1	10,600							
65	59.3	110.1	15,500	85	57.2	133.0	9,600							
70	56.5	106.9	13,900	90	54.9	129.6	8,700							
75	53.6	103.4	12,500	95	52.5	125.9	7,900							
80	50.6	99.5	11,300	100	50.1	121.9	7,200							
85	47.4	95.2	10,300	105	47.6	117.6	6,500							
90	44.1	90.3	9,400	110	45.0	112.8	6,000							
95	40.6	84.9	8,600	115	42.2	107.5	5,400							
100	36.8	78.6	7,900	120	39.3	101.7	5,000							
105	32.7	71.4	7,200											
110	28.0	62.9	6,700											
115	22.4	52.3	6,100											

Combined From Charts:  
 No. 6723-A 2-9-76  
 No. 6445-A 1-29-75  
 No. 6720 12-5-75

# SEE CONDITIONS ON REVERSE SIDE



# JIB LIFTING CAPACITIES

MEETS  
ANSI B30.5  
REQUIREMENTS

# 2900WC

**JIB NO. 124 WITH 18' STRUT ON  
 BOOM NO. 16 WITH OPEN THROAT TOP  
 20' CRAWLERS EXTENDED AND BLOCKED**

**0 DEGREE JIB OFFSET ANGLE**

Chart supplements boom capacity chart No. 6723-A. Capacities are for freely suspended loads based on tipping, strength of structural components or other factors. Crane operator judgment must be used to allow for dynamic load effects of swinging, hoisting or lowering, as well as adverse operating conditions or physical machine depreciation.

machine on firm level surface. Capacities based on structural competence are denoted by shaded areas. Operating radius is horizontal distance from axis of rotation to center of vertical hoist line or load block. Weight of all load blocks, hooks, weight ball, slings, hoist lines beneath boom and jib point sheaves, etc., including those on the main boom is considered part of the jib load. Maximum capacity on 3/4" - 6x25 IPS, IWRC is 13,000 lbs./line.

Capacities do not exceed 75% of static tipping loads with

30 FOOT JIB	JIB POINT RADIUS: FEET	CAPACITIES IN POUNDS									JIB POINT RADIUS: FEET	
		BOOM LENGTH - FEET										
		70	80	90	100	110	120	130	140	150		160
50*	20,000	20,000	20,000	20,000	20,000	20,000	20,000	20,000	20,000	20,000	20,000	50*
55	20,000	20,000	20,000	20,000	20,000	20,000	19,900	19,700	19,400	19,200	19,000	55
60	18,700	18,400	18,200	18,000	17,800	17,500	17,300	17,100	16,800	16,600	16,400	60
65	16,700	16,400	16,200	16,100	15,800	15,600	15,400	15,100	14,900	14,600	14,400	65
70	15,100	14,800	14,600	14,400	14,200	13,900	13,700	13,400	13,200	13,000	12,800	70
75	13,700	13,400	13,200	13,100	12,800	12,500	12,300	12,000	11,800	11,600	11,400	75
80	12,500	12,200	12,000	11,900	11,600	11,300	11,100	10,800	10,600	10,400	10,200	80
85	11,500	11,200	10,900	10,800	10,600	10,300	10,100	9,800	9,600	9,300	9,100	85
90	10,600	10,300	10,000	9,900	9,600	9,400	9,100	8,900	8,600	8,400	8,200	90
95		9,500	9,200	9,100	8,800	8,600	8,300	8,100	7,800	7,600	7,400	95
100			8,500	8,400	8,100	7,800	7,600	7,300	7,100	6,800	6,600	100
105			7,800	7,700	7,400	7,200	7,000	6,700	6,500	6,200	6,000	105
110				7,100	6,900	6,600	6,400	6,100	5,900	5,600	5,400	110
120					5,900	5,600	5,400	5,100	4,900	4,600	4,400	120
130						4,700	4,500	4,200	4,000	3,700	3,500	130
140							3,800	3,500	3,300	3,000	2,800	140

40 FOOT JIB	JIB POINT RADIUS: FEET	CAPACITIES IN POUNDS									JIB POINT RADIUS: FEET	
		BOOM LENGTH - FEET										
		70	80	90	100	110	120	130	140	150		160
65*	14,000	14,000	14,000	14,000	14,000	14,000	14,000	14,000	14,000	14,000	14,000	65*
70	14,000	14,000	14,000	14,000	14,000	14,000	13,800	13,600	13,300	13,100	12,900	70
75	13,800	13,600	13,300	13,200	12,900	12,700	12,400	12,200	11,900	11,700	11,500	75
80	12,700	12,400	12,100	12,000	11,700	11,500	11,200	11,000	10,700	10,500	10,200	80
85	11,600	11,300	11,100	10,900	10,700	10,400	10,200	9,900	9,700	9,400	9,200	85
90	10,700	10,400	10,200	10,000	9,800	9,500	9,300	9,000	8,800	8,500	8,300	90
95	9,900	9,600	9,300	9,200	9,000	8,700	8,400	8,200	7,900	7,700	7,400	95
100		8,900	8,600	8,500	8,200	8,000	7,700	7,400	7,200	7,000	6,700	100
105		8,200	8,000	7,800	7,600	7,300	7,100	6,800	6,600	6,300	6,100	105
110			7,400	7,200	7,000	6,700	6,500	6,200	6,000	5,700	5,500	110
115			6,900	6,700	6,500	6,200	6,000	5,700	5,400	5,200	5,000	115
120				6,200	6,000	5,700	5,500	5,200	5,000	4,700	4,500	120
130					5,100	4,900	4,600	4,300	4,100	3,800	3,600	130
140						4,100	3,900	3,600	3,400	3,100	2,900	140

50 FOOT JIB	JIB POINT RADIUS: FEET	CAPACITIES IN POUNDS									JIB POINT RADIUS: FEET	
		BOOM LENGTH - FEET										
		70	80	90	100	110	120	130	140	150		160
80*	10,000	10,000	10,000	10,000	10,000	10,000	10,000	10,000	10,000	10,000	10,000	80*
85	10,000	10,000	10,000	10,000	10,000	10,000	10,000	10,000	9,800	9,500	9,300	85
90	10,000	10,000	10,000	10,000	9,900	9,800	9,400	9,100	8,900	8,600	8,400	90
95	10,000	9,700	9,500	9,300	9,100	8,800	8,600	8,300	8,100	7,800	7,600	95
100	9,300	9,000	8,700	8,600	8,300	8,100	7,800	7,600	7,300	7,100	6,800	100
105	8,600	8,300	8,100	7,900	7,700	7,400	7,200	6,900	6,700	6,400	6,200	105
110		7,800	7,500	7,300	7,100	6,800	6,600	6,300	6,100	5,800	5,600	110
115		7,200	7,000	6,800	6,600	6,300	6,100	5,800	5,600	5,300	5,100	115
120			6,500	6,300	6,100	5,800	5,600	5,300	5,100	4,800	4,600	120
130				5,500	5,200	5,000	4,700	4,400	4,200	3,900	3,700	130
140					4,500	4,200	4,000	3,700	3,500	3,200	3,000	140
150						3,600	3,400	3,100	2,900	2,600	2,400	150

60 FOOT JIB	JIB POINT RADIUS: FEET	CAPACITIES IN POUNDS									JIB POINT RADIUS: FEET	
		BOOM LENGTH - FEET										
		70	80	90	100	110	120	130	140	150		160
105*	5,000	5,000	5,000	5,000	5,000	5,000	5,000	5,000	5,000	5,000	5,000	105*
110	5,000	5,000	5,000	5,000	5,000	5,000	5,000	5,000	5,000	5,000	5,000	110
115	5,000	5,000	5,000	5,000	5,000	5,000	5,000	5,000	5,000	5,000	5,000	115
120	5,000	5,000	5,000	5,000	5,000	5,000	5,000	5,000	5,000	4,800	4,600	120
125		5,000	5,000	5,000	5,000	5,000	5,000	4,900	4,600	4,400	4,200	125
130			5,000	5,000	5,000	5,000	5,000	4,800	4,500	4,200	4,000	130
135				5,000	5,000	5,000	5,000	4,800	4,500	4,200	4,000	135
140				5,000	5,000	5,000	5,000	4,800	4,500	4,200	4,000	140
145				4,800	4,600	4,400	4,200	4,000	3,800	3,500	3,300	145
150				4,500	4,200	4,000	3,700	3,400	3,100	2,800	2,600	150

\* These capacities apply for ALL lesser radii obtainable.



# JIB LIFTING CAPACITIES

MEETS  
ANSI B30.5  
REQUIREMENTS

# 2900WC

**JIB NO. 124 WITH 18' STRUT ON  
BOOM NO. 16 WITH OPEN THROAT TOP  
20' CRAWLERS EXTENDED AND BLOCKED**

**10 DEGREE JIB OFFSET ANGLE**

Chart supplements boom capacity chart No. 6723-A. Capacities are for freely suspended loads based on tipping, strength of structural components or other factors. Crane operator judgment must be used to allow for dynamic load effects of swinging, hoisting or lowering, as well as adverse operating conditions or physical machine depreciation.

machine on firm level surface. Capacities based on structural competence are denoted by shaded areas. Operating radius is horizontal distance from axis of rotation to center of vertical hoist line or load block. Weight of all load blocks, hooks, weight ball, slings, hoist lines beneath boom and jib point sheaves, etc., including those on the main boom is considered part of the jib load. Maximum capacity on 3/4" - 6x25 IPS, IWRC is 13,000 lbs./line.

Capacities do not exceed 75% of static tipping loads with

30 FOOT JIB	JIB POINT RADIUS: FEET	CAPACITIES IN POUNDS										JIB POINT RADIUS: FEET
		BOOM LENGTH - FEET										
		70	80	90	100	110	120	130	140	150	160	
50*	20,000	20,000	20,000	20,000	20,000	20,000	20,000	20,000	20,000	20,000	20,000	50*
55	20,000	20,000	20,000	20,000	20,000	20,000	20,000	19,900	19,700	19,500	19,300	55
60	18,900	18,600	18,400	18,300	18,100	17,900	17,700	17,400	17,200	17,000	16,800	60
65	16,900	16,700	16,400	16,300	16,100	15,900	15,700	15,400	15,200	15,000	14,800	65
70	15,300	15,000	14,800	14,700	14,500	14,200	14,000	13,800	13,600	13,300	13,100	70
75	13,900	13,600	13,400	13,300	13,000	12,800	12,600	12,300	12,100	11,900	11,700	75
80	12,600	12,400	12,100	12,000	11,800	11,600	11,300	11,100	10,900	10,700	10,500	80
85		11,300	11,100	11,000	10,700	10,500	10,300	10,000	9,800	9,600	9,400	85
90		10,400	10,200	10,000	9,800	9,600	9,300	9,100	8,900	8,600	8,400	90
95			9,300	9,200	9,000	8,700	8,500	8,300	8,000	7,800	7,600	95
100				8,500	8,200	8,000	7,800	7,500	7,300	7,100	6,900	100
105				7,800	7,600	7,300	7,100	6,900	6,600	6,400	6,200	105
110					7,000	6,700	6,500	6,300	6,000	5,800	5,600	110
115						6,200	6,000	5,700	5,500	5,200	5,000	115
120						5,700	5,500	5,200	5,000	4,700	4,500	120
130								4,300	4,100	3,900	3,700	130

40 FOOT JIB	JIB POINT RADIUS: FEET	CAPACITIES IN POUNDS										JIB POINT RADIUS: FEET
		BOOM LENGTH - FEET										
		70	80	90	100	110	120	130	140	150	160	
65*	14,000	14,000	14,000	14,000	14,000	14,000	14,000	14,000	14,000	14,000	14,000	65*
70	14,000	14,000	14,000	14,000	14,000	14,000	14,000	14,000	13,800	13,600	13,400	70
75	14,000	13,800	13,600	13,500	13,300	13,000	12,800	12,600	12,400	12,100	11,900	75
80	12,800	12,600	12,400	12,200	12,000	11,800	11,600	11,300	11,100	10,900	10,700	80
85	11,800	11,500	11,300	11,200	10,900	10,700	10,500	10,300	10,100	9,800	9,600	85
90	10,800	10,600	10,400	10,200	10,000	9,800	9,600	9,300	9,100	8,900	8,700	90
95		9,700	9,500	9,400	9,200	8,900	8,700	8,500	8,300	8,000	7,800	95
100			8,800	8,700	8,400	8,200	8,000	7,700	7,500	7,300	7,100	100
105			8,100	8,000	7,800	7,500	7,300	7,000	6,800	6,600	6,400	105
110				7,400	7,200	6,900	6,700	6,400	6,200	6,000	5,800	110
115					6,600	6,400	6,100	5,900	5,700	5,400	5,200	115
120					6,100	5,900	5,600	5,400	5,200	4,900	4,700	120
130								4,800	4,500	4,300	4,000	130
140									3,800	3,500	3,300	140

50 FOOT JIB	JIB POINT RADIUS: FEET	CAPACITIES IN POUNDS										JIB POINT RADIUS: FEET
		BOOM LENGTH - FEET										
		70	80	90	100	110	120	130	140	150	160	
85*	10,000	10,000	10,000	10,000	10,000	10,000	10,000	10,000	10,000	10,000	10,000	85*
90	10,000	10,000	10,000	10,000	10,000	10,000	9,900	9,700	9,500	9,300	9,100	90
95	10,000	9,900	9,700	9,600	9,300	9,100	8,900	8,700	8,400	8,200	8,000	95
100	9,400	9,200	8,900	8,800	8,600	8,300	8,100	7,900	7,700	7,500	7,300	100
105		8,500	8,300	8,100	7,900	7,700	7,500	7,200	7,000	6,800	6,600	105
110			7,700	7,500	7,300	7,100	6,900	6,600	6,400	6,200	6,000	110
115				7,100	7,000	6,800	6,500	6,300	6,100	5,800	5,600	115
120					6,500	6,300	6,000	5,800	5,600	5,300	5,100	120
125					6,000	5,800	5,600	5,300	5,100	4,900	4,600	125
130						5,400	5,100	4,900	4,700	4,500	4,200	130
140							4,400	4,200	3,900	3,700	3,400	140
150									3,300	3,100	2,900	150

60 FOOT JIB	JIB POINT RADIUS: FEET	CAPACITIES IN POUNDS										JIB POINT RADIUS: FEET
		BOOM LENGTH - FEET										
		70	80	90	100	110	120	130	140	150	160	
105*	5,000	5,000	5,000	5,000	5,000	5,000	5,000	5,000	5,000	5,000	5,000	105*
110	5,000	5,000	5,000	5,000	5,000	5,000	5,000	5,000	5,000	5,000	5,000	110
115	5,000	5,000	5,000	5,000	5,000	5,000	5,000	5,000	5,000	5,000	5,000	115
120		5,000	5,000	5,000	5,000	5,000	5,000	5,000	5,000	5,000	5,000	120
125			5,000	5,000	5,000	5,000	5,000	5,000	5,000	4,700	4,500	125
130				5,000	5,000	5,000	5,000	5,000	4,700	4,500	4,300	130
135					5,000	5,000	5,000	5,000	4,400	4,100	3,900	135
140						4,700	4,500	4,200	4,000	3,800	3,500	140
145								4,100	3,900	3,700	3,400	145
150								3,800	3,600	3,300	3,100	150

\* These capacities apply for ALL lesser radii obtainable.





# JIB LIFTING CAPACITIES

MEETS  
ANSI B30.5  
REQUIREMENTS

## 2900WC

**JIB NO. 124 WITH 18' STRUT ON  
 BOOM NO. 16 WITH OPEN THROAT TOP  
 20' CRAWLERS EXTENDED AND BLOCKED**

**20 DEGREE JIB OFFSET ANGLE**

Chart supplements boom capacity chart No. 6723-A. Capacities are for freely suspended loads based on tipping, strength of structural components or other factors. Crane operator judgment must be used to allow for dynamic load effects of swinging, hoisting or lowering, as well as adverse operating conditions or physical machine depreciation.

machine on firm level surface. Capacities based on structural competence are denoted by shaded areas. Operating radius is horizontal distance from axis of rotation to center of vertical hoist line or load block. Weight of all load blocks, hooks, weight ball, slings, hoist lines beneath boom and jib point sheaves, etc., including those on the main boom is considered part of the jib load. Maximum capacity on 3/4" - 6x25 IPS, IWRC is 13,000 lbs./line.

Capacities do not exceed 75% of static tipping loads with

30 FOOT JIB	JIB POINT RADIUS: FEET	CAPACITIES IN POUNDS									JIB POINT RADIUS: FEET	
		BOOM LENGTH - FEET										
		70	80	90	100	110	120	130	140	150		160
40*	20,000	20,000	20,000	20,000	20,000	20,000	20,000	20,000	20,000	20,000	19,600	40*
45	20,000	20,000	20,000	20,000	20,000	20,000	20,000	20,000	20,000	20,000	19,700	45
50	20,000	20,000	20,000	20,000	20,000	20,000	20,000	20,000	20,000	20,000	18,700	50
55	20,000	20,000	20,000	20,000	20,000	20,000	20,000	20,000	20,000	20,000	18,000	55
60	19,100	18,900	18,700	18,600	18,400	18,200	18,100	17,900	17,700	17,100	17,100	60
65	17,100	16,900	16,700	16,600	16,400	16,200	16,000	15,800	15,600	15,400	15,400	65
70	15,400	15,200	15,000	14,900	14,700	14,500	14,300	14,100	13,900	13,700	13,700	70
75		13,800	13,600	13,500	13,300	13,000	12,900	12,600	12,500	12,200	12,200	75
80		12,500	12,300	12,200	12,000	11,800	11,600	11,400	11,200	11,000	11,000	80
85			11,200	11,100	10,900	10,700	10,500	10,300	10,100	9,900	9,900	85
90				10,200	10,000	9,800	9,600	9,300	9,100	8,900	8,900	90
95					9,100	8,900	8,700	8,500	8,300	8,000	8,000	95
100						8,100	7,900	7,700	7,500	7,300	7,300	100
105						7,500	7,300	7,000	6,800	6,600	6,600	105
110							6,700	6,400	6,200	6,000	6,000	110
115								5,900	5,700	5,400	5,400	115

40 FOOT JIB	JIB POINT RADIUS: FEET	CAPACITIES IN POUNDS									JIB POINT RADIUS: FEET	
		BOOM LENGTH - FEET										
		70	80	90	100	110	120	130	140	150		160
65*	14,000	14,000	14,000	14,000	14,000	14,000	14,000	14,000	14,000	14,000	14,000	65*
70	14,000	14,000	14,000	14,000	14,000	14,000	14,000	14,000	14,000	13,800	13,800	70
75	14,000	14,000	13,900	13,800	13,600	13,400	13,200	13,000	12,800	12,600	12,600	75
80	13,000	12,800	12,600	12,500	12,300	12,100	11,900	11,700	11,500	11,300	11,300	80
85		11,700	11,500	11,400	11,200	11,000	10,800	10,600	10,400	10,200	10,200	85
90			10,500	10,400	10,200	10,000	9,800	9,600	9,400	9,200	9,200	90
95			9,700	9,600	9,400	9,200	9,000	8,800	8,600	8,300	8,300	95
100				8,800	8,600	8,400	8,200	8,000	7,800	7,600	7,600	100
105					7,900	7,700	7,500	7,300	7,100	6,900	6,900	105
110						7,100	6,900	6,700	6,500	6,200	6,200	110
115							6,300	6,100	5,900	5,700	5,700	115
120								5,600	5,400	5,200	5,200	120
125								5,100	4,900	4,700	4,700	125
130									4,500	4,200	4,200	130

50 FOOT JIB	JIB POINT RADIUS: FEET	CAPACITIES IN POUNDS									JIB POINT RADIUS: FEET	
		BOOM LENGTH - FEET										
		70	80	90	100	110	120	130	140	150		160
85*	10,000	10,000	10,000	10,000	10,000	10,000	10,000	10,000	10,000	10,000	10,000	85*
90	10,000	10,000	10,000	10,000	10,000	10,000	10,000	10,000	9,900	9,700	9,500	90
95		10,000	9,900	9,800	9,600	9,400	9,200	9,000	8,800	8,600	8,600	95
100			9,100	9,000	8,800	8,600	8,400	8,200	8,000	7,800	7,800	100
105			8,500	8,300	8,200	7,900	7,700	7,500	7,300	7,100	7,100	105
110				7,700	7,500	7,300	7,100	6,900	6,700	6,500	6,500	110
115					7,000	6,700	6,500	6,300	6,100	5,900	5,900	115
120						6,200	6,000	5,800	5,600	5,400	5,400	120
125							5,500	5,300	5,100	4,900	4,900	125
130							5,100	4,900	4,700	4,500	4,500	130
140								4,900	4,700	4,500	4,500	140

60 FOOT JIB	JIB POINT RADIUS: FEET	CAPACITIES IN POUNDS									JIB POINT RADIUS: FEET	
		BOOM LENGTH - FEET										
		70	80	90	100	110	120	130	140	150		160
100*	5,000	5,000	5,000	5,000	5,000	5,000	5,000	5,000	5,000	5,000	5,000	100*
105		5,000	5,000	5,000	5,000	5,000	5,000	5,000	5,000	5,000	5,000	105
110			5,000	5,000	5,000	5,000	5,000	5,000	5,000	5,000	5,000	110
115				5,000	5,000	5,000	5,000	5,000	5,000	5,000	5,000	115
120				5,000	5,000	5,000	5,000	5,000	5,000	5,000	5,000	120
125					5,000	5,000	5,000	5,000	5,000	5,000	5,000	125
130						5,000	5,000	5,000	5,000	5,000	5,000	130
135							5,000	5,000	4,800	4,600	4,600	135
140								4,400	4,200	4,000	4,000	140
150									4,200	3,900	3,700	150

\* These capacities apply for ALL lesser radii obtainable.



# JIB LIFTING CAPACITIES

MEETS  
ANSI B30.5  
REQUIREMENTS

# 2900WC

**JIB NO. 124 WITH 18' STRUT ON  
 BOOM NO. 16 WITH OPEN THROAT TOP  
 20' CRAWLERS EXTENDED AND BLOCKED**

**30 DEGREE JIB OFFSET ANGLE**

Chart supplements boom capacity chart No. 6723-A. Capacities are for freely suspended loads based on tipping, strength of structural components or other factors. Crane operator judgment must be used to allow for dynamic load effects of swinging, hoisting or lowering, as well as adverse operating conditions or physical machine depreciation.

machine on firm level surface. Capacities based on structural competence are denoted by shaded areas. Operating radius is horizontal distance from axis of rotation to center of vertical hoist line or load block. Weight of all load blocks, hooks, weight ball, slings, hoist lines beneath boom and jib point sheaves, etc., including those on the main boom is considered part of the jib load. Maximum capacity on 3/4" - 6x25 IPS, IWRC is 13,000 lbs./line.

Capacities do not exceed 75% of static tipping loads with

30 FOOT JIB	JIB POINT RADIUS: FEET	CAPACITIES IN POUNDS										JIB POINT RADIUS: FEET
		BOOM LENGTH - FEET										
		70	80	90	100	110	120	130	140	150	160	
45*	20,000	20,000	20,000	20,000	20,000	20,000	20,000	20,000	18,400	17,700	16,800	45*
50	20,000	20,000	20,000	20,000	20,000	20,000	19,300	18,600	17,000	16,200	15,500	50
55	19,800	20,000	20,000	20,000	20,000	20,000	19,500	18,800	17,700	17,000	16,200	55
60	19,800	19,200	19,000	18,900	18,900	18,800	18,600	17,900	17,100	16,300	15,600	60
65		17,100	17,000	16,900	16,700	16,500	16,400	16,200	15,800	15,000	14,300	65
70			15,200	15,200	15,000	14,800	14,600	14,400	14,300	14,100	13,900	70
75				13,700	13,500	13,300	13,100	12,900	12,800	12,600	12,400	75
80					12,200	12,000	11,900	11,700	11,500	11,300	11,100	80
85						10,900	10,700	10,500	10,400	10,200	10,000	85
90								9,500	9,400	9,200	9,000	90
95									8,500	8,300	8,100	95
100										7,500	7,300	100

40 FOOT JIB	JIB POINT RADIUS: FEET	CAPACITIES IN POUNDS										JIB POINT RADIUS: FEET
		BOOM LENGTH - FEET										
		70	80	90	100	110	120	130	140	150	160	
55*	14,000	14,000	14,000	14,000	14,000	14,000	14,000	14,000	14,000	14,000	14,000	55*
60	14,000	14,000	14,000	14,000	14,000	14,000	14,000	14,000	14,000	14,000	13,400	60
65	14,000	14,000	14,000	14,000	14,000	14,000	14,000	14,000	14,000	13,500	12,900	65
70	14,000	14,000	14,000	14,000	14,000	14,000	14,000	14,000	14,000	13,000	12,500	70
75		14,000	14,000	14,000	13,900	13,700	13,600	13,200	12,600	12,000	11,400	75
80			12,800	12,800	12,600	12,400	12,300	12,100	11,900	11,700	11,500	80
85					11,500	11,300	11,100	10,900	10,800	10,600	10,400	85
90						10,300	10,100	9,900	9,800	9,600	9,400	90
95								9,200	9,000	8,900	8,700	95
100									8,200	8,100	7,900	100
105										7,300	7,100	105
110											6,500	110

50 FOOT JIB	JIB POINT RADIUS: FEET	CAPACITIES IN POUNDS										JIB POINT RADIUS: FEET
		BOOM LENGTH - FEET										
		70	80	90	100	110	120	130	140	150	160	
80*	10,000	10,000	10,000	10,000	10,000	10,000	10,000	10,000	10,000	10,000	10,000	80*
85		10,000	10,000	10,000	10,000	10,000	10,000	10,000	10,000	10,000	9,800	85
90			10,000	10,000	10,000	10,000	10,000	10,000	10,000	10,000	9,500	90
95				10,000	10,000	9,800	9,700	9,500	9,300	9,200	9,000	95
100							8,900	8,700	8,500	8,400	8,200	100
105								8,000	7,800	7,600	7,400	105
110									7,100	7,000	6,800	110
115										6,400	6,200	115
120											5,600	120

60 FOOT JIB	JIB POINT RADIUS: FEET	CAPACITIES IN POUNDS										JIB POINT RADIUS: FEET
		BOOM LENGTH - FEET										
		70	80	90	100	110	120	130	140	150	160	
90*	5,000	5,000	5,000	5,000	5,000	5,000	5,000	5,000	5,000	5,000	5,000	90*
95		5,000	5,000	5,000	5,000	5,000	5,000	5,000	5,000	5,000	5,000	95
100			5,000	5,000	5,000	5,000	5,000	5,000	5,000	5,000	5,000	100
105				5,000	5,000	5,000	5,000	5,000	5,000	5,000	5,000	105
110					5,000	5,000	5,000	5,000	5,000	5,000	5,000	110
115						5,000	5,000	5,000	5,000	5,000	5,000	115
120							5,000	5,000	5,000	5,000	5,000	120
125								5,000	5,000	5,000	5,000	125
130									5,000	4,900	4,800	130
135										4,500	4,400	135

\* These capacities apply for ALL lesser radii obtainable.

# MANITOWOC ENGINEERING CO.

A Division of The Manitowoc Company, Inc.

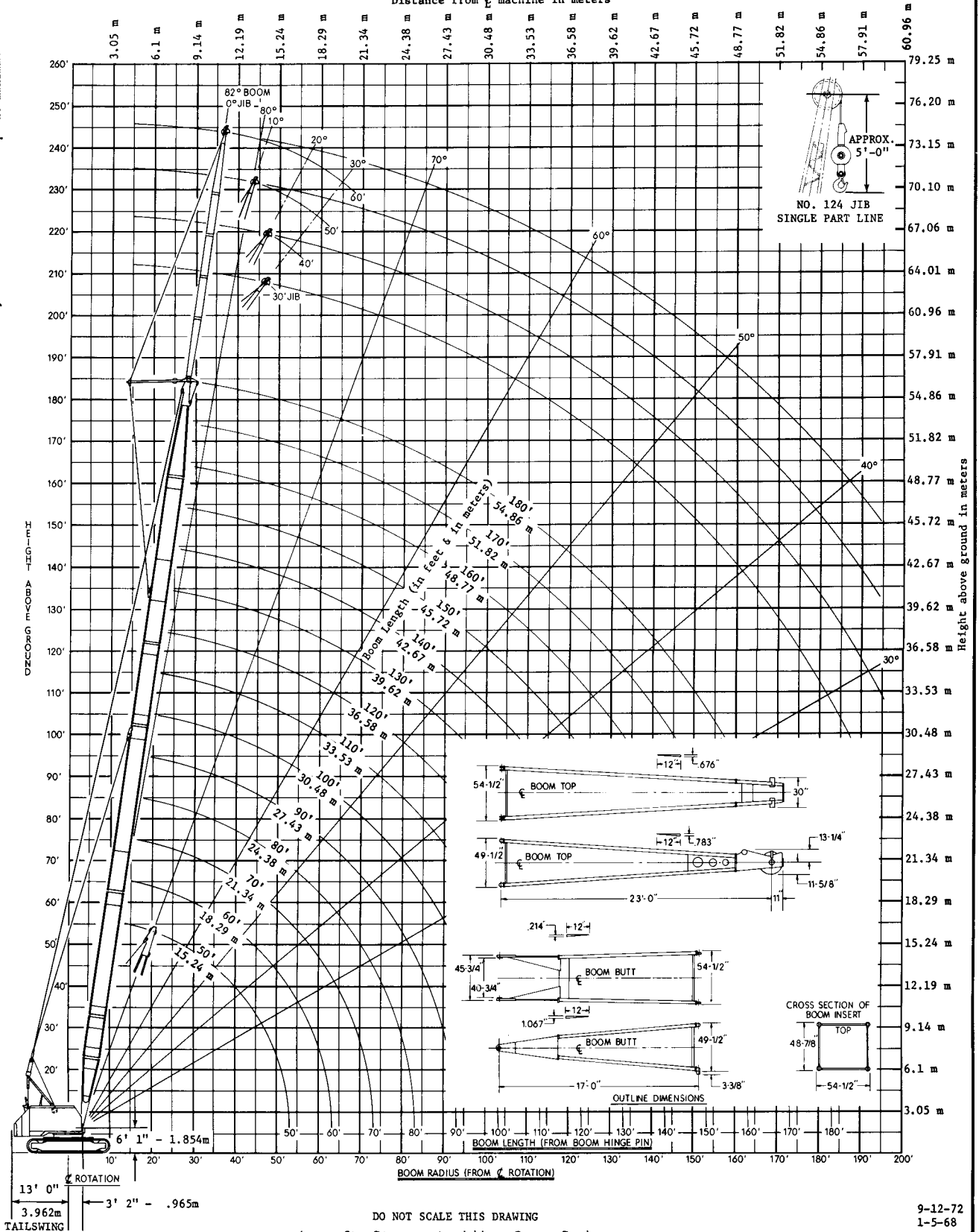
Manitowoc, Wisconsin

**NOTE 1:** This drawing is intended only as a guide to assist in job planning.  
**NOTE 2:** For planning a lift, this drawing is to be used in conjunction with appropriate-  
 A. Capacity Charts. C. Load Line Specifications. E. Outline Dimensions.  
 B. Range Chart. D. Rigging Drawing.

**NOTE 3:** For planning lifts where clearances are limited and accuracy is  
 desired, a detailed layout should be prepared.  
**NOTE 4:** When equipped with hoist line limit switch, contact  
 factory for load block to boom point minimum distance.

MAXIMUM BOOM ANGLE  
 82° For No. 18 Boom w/Open Throat Top

Distance from  $\epsilon$  machine in meters



50603

9-12-72  
 1-5-68

Larger Size Diagrams Available - Contact Dealer.

RANGE DIAGRAM - M2900WC - No. 18 BOOM w/No. 124 JIB



# LIFTCRANE CAPACITIES

MEETS  
ANSI B30.5  
REQUIREMENTS

# 2900WC CRAWLER

## BOOM NO. 18 WITH OPEN THROAT TOP 20'0" CRAWLERS EXTENDED AND BLOCKED 36,000 LB. COUNTERWEIGHT

**LIFTING CAPACITIES:** Capacities for various boom lengths and operating radii may be based on per cent of tipping, strength of structural components, operating speeds and other factors. Capacities are for freely suspended loads and do not exceed 75% of static tipping loads. Capacities based on structural competence are shown by shaded areas.

Capacities are shown in pounds. Weight of jib, (see chart A), all load blocks, hooks, weight ball, slings, hoist lines beneath boom and jib point sheaves, etc., is considered part of the main boom load. Boom is not to be lowered beyond radii where combined weights are greater than rated capacity. Where no capacity is shown, operation is not intended or approved.

**OPERATING CONDITIONS:** Machine to operate in a level position on a firm surface with crawlers fully extended and blocked, and gantry in working position, and under conditions referred to in rigging drawing No. 190077 and wire rope specification chart No. 6483-A.

Crane operator judgment must be used to allow for dynamic load effects of swinging, hoisting or lowering, as well as adverse operating conditions or physical machine depreciation.

**OPERATING RADIUS:** Operating radius is the horizontal distance from the axis of rotation to the center of vertical hoist line or load block with the load freely suspended. Add 11" to boom point radius for radius of sheave when using single part hoist line.

Boom angle is the angle between horizontal and centerline of boom butt and inserts and is an indication of operating radius. In all cases, operating radius shall govern capacity.

**BOOM POINT ELEVATION:** Boom point elevation, in feet, is the vertical distance from ground level to centerline of boom point shaft.

**MACHINE EQUIPMENT:** Machine equipped with 20'0" extendible crawlers, 30" or 36" treads, 9' retractable gantry, 10

part boom hoist reeving, two 1-3/8" pendants, 1st ctwt. 18,000 lbs., 2nd ctwt. 18,000 lbs. Total counterweight 36,000 pounds.

HOIST REEVING FOR MAIN LOAD BLOCK						
No. Parts of Line	1	2	3	4	5	6
Max. Load - Lbs.	18,400	36,800	55,200	73,600	92,000	110,400
No. Parts of Line	7	8				
Max. Load - Lbs.	123,500	130,000				

LOAD AND WHIP LINE SPECIFICATIONS	
LOAD LINE: 3/4" - 6x25 Bright Super Tensile, Monitor AAA, Regular Lay, IWRC. Minimum Breaking Strength 32.3 Ton.	
WHIP LINE: 3/4" - 6x25 Filler Wire, Improved Plow Steel, Regular Lay, IWRC. Minimum Breaking Strength 25.6 Ton. Maximum Load - 13,000 lbs. per Line.	

MAXIMUM BOOM AND JIB LENGTHS LIFTED UNASSISTED			
OVER FRONT OF BLOCKED CRAWLERS		OVER SIDE OF EXTENDED CRAWLERS	
Boom Length	Jib No. 124	Boom Length	Jib No. 124
180'	---	180'	---
180'	60'	180'	30'
		170'	50'
		160'	60'

Load block, hook and weight ball on ground at start.

(A) DEDUCT FROM CAPACITIES WHEN JIB IS ATTACHED	
Jib Length	Jib No. 124
30'	1,800 Lb.
40'	2,050 Lb.
50'	2,300 Lb.
60'	2,500 Lb.

For jib capacities, consult jib chart.

Boom Lgth.: Feet	Oper. Rad.: Feet	Boom Angle: Deg.	Boom Point: Elev.	Capacity: Crawlers Extended	Boom Lgth.: Feet	Oper. Rad.: Feet	Boom Angle: Deg.	Boom Point: Elev.	Capacity: Crawlers Extended	Boom Lgth.: Feet	Oper. Rad.: Feet	Boom Angle: Deg.	Boom Point: Elev.	Capacity: Crawlers Extended		
40	12	77.2	45.1	130,000	50	34	51.9	45.4	41,000	70	14	81.1	75.2	92,700		
	13	75.8	44.8	128,000		36	49.0	43.8	37,900		15	80.3	75.1	90,400		
	14	74.3	44.6	126,000		38	45.8	41.9	35,200		16	79.4	74.9	88,200		
	15	72.8	44.4	124,500		40	42.6	39.9	32,800		17	78.6	74.7	86,100		
	16	71.3	43.9	122,800		45	33.2	33.4	28,000		18	77.8	74.5	84,100		
						50	20.5	23.6	23,700							
	17	69.8	43.6	119,900							19	76.9	74.2	82,200		
	18	68.2	43.2	117,700							20	76.1	74.0	80,400		
	19	66.7	42.8	115,000		13	80.6	65.3	102,900		22	74.4	73.5	77,000		
	20	65.1	42.3	112,000		14	79.6	65.1	100,300		24	72.7	72.9	74,000		
	22	61.9	41.4	79,200		15	78.6	64.9	97,900		26	71.0	72.2	70,300		
						16	77.6	64.7	95,600							
	24	58.6	40.2	68,900		17	76.7	64.4	93,400							
	26	55.2	38.9	60,900							28	69.2	71.5	53,900		
	28	51.6	37.4	54,500		18	75.7	64.2	91,300		30	67.5	70.7	48,700		
	30	47.9	35.7	49,300		19	74.7	63.9	89,300		32	65.7	69.8	44,300		
32	43.9	33.8	44,900	20	73.7	63.7	87,300	34	63.9	68.9	40,700					
				22	71.7	63.0	78,800	36	62.0	67.9	37,500					
34	39.6	31.5	41,300	24	69.7	62.3	68,400									
36	34.8	28.9	38,200					38	60.2	66.8	34,800					
38	29.4	25.7	35,500	26	67.6	61.5	60,400	40	58.3	65.6	32,400					
40	23.0	21.7	31,000	28	65.6	60.7	54,000	45	53.3	62.2	27,600					
				30	63.4	59.7	48,800	50	48.0	58.1	24,000					
12	79.8	55.3	116,600	32	61.3	58.7	44,400	55	42.2	53.1	21,100					
13	78.7	55.1	113,600	34	59.1	57.5	40,800									
14	77.5	54.9	110,700					60	35.7	46.9	18,800					
15	76.3	54.6	108,000	36	56.8	56.3	37,600	65	28.0	38.9	16,900					
16	75.1	54.4	105,400	38	54.5	54.9	34,900	70	17.3	26.9	15,200					
				40	52.1	53.4	32,500									
17	73.9	54.1	102,900	45	45.8	49.1	27,700									
18	72.7	53.8	100,500	50	38.7	43.6	24,100									
19	71.5	53.5	98,300					55	30.2	36.3	21,200					
20	70.3	53.1	92,900	55	30.2	36.3	21,200	60	18.7	25.3	18,700					
22	67.9	52.4	79,000													
24	65.4	51.5	68,700													
26	62.8	50.5	60,600													
28	60.2	49.3	54,200													
30	57.5	48.3	49,000													
32	54.8	46.9	44,700													

Capacities continued on reverse side.





# LIFTCRANE CAPACITIES

MEETS ANSI B30.5  
 REQUIREMENTS EXCEPT  
 WHERE NOTED WITH B

# 2900WC CRAWLER

## BOOM NO. 18 WITH OPEN THROAT TOP 20'0" CRAWLERS — 36,000 LB. COUNTERWEIGHT

**LIFTING CAPACITIES:** Capacities for various boom lengths and operating radii may be based on per cent of tipping, strength of structural components, operating speeds and other factors. Capacities are for freely suspended loads and do not exceed 75% of static tipping loads. Capacities based on structural competence are shown by shaded areas.

Capacities indicated by "B" represent boom positions which, without load, provide less than required ANSI B30.5 backward stability.

Capacities are shown in pounds. Weight of jib, (see chart A), all load blocks, hooks, weight ball, slings, hoist lines beneath boom and jib point sheaves, etc., is considered part of the main boom load. Boom is not to be lowered beyond radii where combined weights are greater than rated capacity. Where no capacity is shown, operation is not intended or approved.

**OPERATING CONDITIONS:** Machine to operate in a level position on a firm surface with gantry in working position and under conditions referred to in rigging drawing No. 190077 and wire rope specification chart No. 6483-A.

Crane operator judgment must be used to allow for dynamic load effects of swinging, hoisting or lowering, travel as well as adverse operating conditions or physical machine depreciation.

**OPERATING RADIUS:** Operating radius is the horizontal distance from the axis of rotation to the center of vertical hoist line or load block with the load freely suspended. Add 11" to boom point radius for radius of sheave when using single part hoist line.

Boom angle is the angle between horizontal and centerline of boom butt and inserts and is an indication of operating radius. In all cases, operating radius shall govern capacity.

**BOOM POINT ELEVATION:** Boom point elevation, in feet, is the vertical distance from ground level to centerline of boom point shaft.

**MACHINE EQUIPMENT:** Machine equipped with 20'0" extendible crawlers, 30" or 36" treads, 9' retractable gantry, 10 part boom hoist reeving, two 1-3/8" pendants, 1st cwt. 18,000 lbs., 2nd cwt. 18,000 lbs. Total counterweight 36,000 pounds.

HOIST REEVING FOR MAIN LOAD BLOCK						
No. Parts of Line	1	2	3	4	5	6
Max. Load — Lbs.	18,400	36,800	55,200	73,600	92,000	110,400
No. Parts of Line	7	8				
Max. Load — Lbs.	123,500	130,000				

LOAD AND WHIP LINE SPECIFICATIONS	
LOAD LINE: 3/4" — 6x25 Bright Super Tensile, Monitor AAA, Regular Lay, IWRC. Minimum Breaking Strength 32.3 Ton.	
WHIP LINE: 3/4" — 6x25 Filler Wire, Improved Plow Steel, Regular Lay, IWRC. Minimum Breaking Strength 25.6 Ton. Maximum Load — 13,000 lbs. per Line.	

MAXIMUM BOOM AND JIB LENGTHS LIFTED UNASSISTED					
OVER FRONT OF BLOCKED CRAWLERS		OVER SIDE OF EXTENDED CRAWLERS		OVER SIDE OF RETRACTED CRAWLERS	
Boom Lgth.	Jib No. 124	Boom Lgth.	Jib No. 124	Boom Lgth.	Jib No. 124
180'	---	180'	---	160'	---
180'	30'	180'	30'	150'	---
170'	50'	170'	50'	140'	30'
160'	60'	160'	60'	130'	50'

Load block, hook and weight ball on ground at start.

(A) DEDUCT FROM CAPACITIES WHEN JIB IS ATTACHED	
Jib Length	Jib No. 124
30'	1,800 Lb.
40'	2,050 Lb.
50'	2,300 Lb.
60'	2,500 Lb.

Boom Lgth.: Feet	Oper. Rad.: Feet	Bm. Ang.: Deg.	Boom Point: Elev.	Capacity: Crawlers Retracted	Capacity: Crawlers Extended	Boom Lgth.: Feet	Oper. Rad.: Feet	Bm. Ang.: Deg.	Boom Point: Elev.	Capacity: Crawlers Retracted	Capacity: Crawlers Extended	Boom Lgth.: Feet	Oper. Rad.: Feet	Bm. Ang.: Deg.	Boom Point: Elev.	Capacity: Crawlers Retracted	Capacity: Crawlers Extended		
40	12	77.2	45.1	105,200B	138,000	60	13	80.6	65.3	91,800B	102,500	80	30	77.9	81.4	24,400	30,400		
	13	75.8	44.8	92,400B	124,000		14	79.6	65.1	81,700B	100,500		31	76.5	81.1	22,700	28,200		
	14	74.3	44.6	82,200B	113,700		15	78.6	64.9	73,500B	97,500		32	75.3	80.8	21,200	26,300		
	15	72.8	44.3	74,100B	100,700		16	77.6	64.7	66,800B	89,900		33	74.1	80.6	19,900	24,600		
	16	71.3	43.9	67,400B	90,400		17	76.7	64.4	61,100B	81,400		34	73.0	80.4	18,700	23,000		
	17	69.8	43.6	61,700B	81,900		18	75.7	64.2	56,400B	74,400		35	71.9	80.2	17,600	21,500		
	18	68.2	43.2	57,000B	74,800		19	74.7	63.9	52,200B	68,400		36	70.4	80.0	16,600	20,100		
	19	66.7	42.8	52,800B	68,900		20	73.7	63.7	48,600B	63,300		37	69.4	79.8	15,700	18,800		
	20	65.1	42.3	49,300B	63,800		22	71.7	63.0	42,700	55,000		38	67.8	79.6	14,900	17,600		
	22	61.9	41.4	43,300B	55,500		24	69.7	62.3	38,000	48,500		39	66.3	79.4	14,200	16,500		
	24	58.6	40.2	38,700B	49,100		26	67.6	61.5	34,200	43,200		40	64.9	79.2	13,600	15,500		
	26	55.2	38.9	34,800B	44,000		28	65.6	60.7	31,000	39,200		41	63.7	79.0	13,100	14,600		
	28	51.6	37.4	31,700B	39,800		30	63.4	59.7	28,400	35,700		42	62.6	78.8	12,700	13,800		
	30	47.9	35.7	29,000B	36,300		32	61.3	58.7	26,100	32,700		43	61.6	78.6	12,300	13,100		
	32	43.9	33.8	26,700B	33,300		34	59.1	57.5	24,100	30,200		44	61.0	78.4	11,900	12,500		
	34	39.6	31.5	24,800	30,800		36	56.8	56.3	22,400	28,000		45	60.5	78.2	11,600	12,000		
36	34.8	28.9	23,100	28,600	38	54.5	54.9	20,900	26,000	46	60.1	78.0	11,300	11,600					
38	29.4	25.7	21,600	26,700	40	52.1	53.4	19,600	24,300	47	59.8	77.8	11,000	11,200					
40	23.0	21.7	20,200	25,000	45	45.8	49.1	16,800	20,900	48	59.6	77.6	10,700	10,900					
					50	38.7	43.6	14,600	18,200	49	59.5	77.5	10,500	10,700					
50	12	79.8	55.3	105,000B	116,500	55	30.2	36.3	12,900	16,000	70	14	81.1	75.2	81,600B	92,700			
	13	78.7	55.1	92,100B	113,600	60	18.7	25.3	11,500	14,300		15	80.3	75.1	73,400B	90,400			
	14	77.5	54.9	81,900B	110,700	16	79.4	74.9	66,700B	88,200		17	78.6	74.7	61,000B	81,300			
	15	76.3	54.6	73,800B	100,500	18	77.8	74.5	56,300B	74,300		19	76.9	74.2	52,100B	68,300			
	16	75.1	54.4	67,100B	90,100	20	76.1	74.0	48,500	63,200		22	74.4	73.5	42,600	54,200			
	17	73.9	54.1	61,400B	81,700	24	72.7	72.9	37,900	48,400		26	71.0	72.2	34,100	43,300			
	18	72.7	53.8	56,600B	74,600	28	69.2	71.5	30,900	39,100		30	67.5	70.7	28,300	35,600			
	19	71.5	53.5	52,500B	68,600	32	65.7	69.8	26,000	32,600		34	63.9	68.9	24,000	30,100			
	20	70.3	53.1	48,900B	63,500	36	62.0	67.9	22,300	27,900		38	62.0	67.9	22,300	27,900			
	22	67.9	52.4	43,000B	55,200														
	24	65.4	51.5	38,300B	48,800														
	26	62.8	50.5	34,500	43,600														
	28	60.2	49.5	31,300	39,400														
	30	57.5	48.3	28,700	35,900														
	32	54.8	46.9	26,400	33,000														
	34	51.9	45.4	24,400	30,400														
36	49.0	43.8	22,700	28,200															
38	45.8	41.9	21,200	26,300															
40	42.6	39.9	19,900	24,600															
45	33.2	33.4	17,100	21,200															
50	20.5	23.6	15,000	18,500															

Capacities continued on reverse side.



**MANITOWOC ENGINEERING CO.**

(A division of The Manitowoc Company, Inc.) Manitowoc, Wisconsin 54220



**JIB LIFTING CAPACITIES**

MEETS  
ANSI B30.5  
REQUIREMENTS

**2900WC**

**JIB NO. 124 WITH 12'6" STRUT ON  
BOOM NO. 18 WITH OPEN THROAT TOP  
20' CRAWLERS EXTENDED AND BLOCKED**

**0 DEGREE JIB OFFSET ANGLE**

Chart supplements boom capacity chart No. 6774-A. Capacities are for freely suspended loads based on tipping, strength of structural components or other factors. Crane operator judgment must be used to allow for dynamic load effects of swinging, hoisting or lowering, as well as adverse operating conditions & physical machine depreciation.

Capacities do not exceed 75% of static tipping loads with machine on firm level surface. Capacities based on structural competence are denoted by shaded areas. Operating radius is horizontal distance from axis of rotation to center of vertical hoist line or load block. Weight of all load blocks, hooks, weight ball, slings, hoist lines beneath boom and jib point sheaves, etc., including those on the main boom, is considered part of the jib load. Maximum capacity on 3/4" - 6x25 IPS, IWRC is 13,000 lbs./line.

Table for 30 FOOT JIB. Columns include JIB POINT RADIUS: FEET (55-140) and CAPACITIES IN POUNDS BOOM LENGTH - FEET (70-180). Shaded areas indicate structural competence.

Table for 40 FOOT JIB. Columns include JIB POINT RADIUS: FEET (75-150) and CAPACITIES IN POUNDS BOOM LENGTH - FEET (70-180). Shaded areas indicate structural competence.

Table for 50 FOOT JIB. Columns include JIB POINT RADIUS: FEET (90-150) and CAPACITIES IN POUNDS BOOM LENGTH - FEET (70-180). Shaded areas indicate structural competence.

Table for 60 FOOT JIB. Columns include JIB POINT RADIUS: FEET (110-155) and CAPACITIES IN POUNDS BOOM LENGTH - FEET (70-180). Shaded areas indicate structural competence.

\* These capacities apply for ALL lesser radii obtainable.

Form No. 6776-A, 5-21-75/GA





# JIB LIFTING CAPACITIES

MEETS  
ANSI B30.5  
REQUIREMENTS

# 2900WC

**JIB NO. 124 WITH 12'6" STRUT ON  
 BOOM NO. 18 WITH OPEN THROAT TOP  
 20' CRAWLERS EXTENDED AND BLOCKED**

**10 DEGREE JIB OFFSET ANGLE**

Chart supplements boom capacity chart No. 6774-A. Capacities are for freely suspended loads based on tipping, strength of structural components or other factors. Crane operator judgment must be used to allow for dynamic load effects of swinging, hoisting or lowering, as well as adverse operating conditions & physical machine depreciation.

Capacities do not exceed **75%** of static tipping loads with machine on firm level surface. Capacities based on structural competence are denoted by shaded areas. Operating radius is horizontal distance from axis of rotation to center of vertical hoist line or load block. Weight of all load blocks, hooks, weight ball, slings, hoist lines beneath boom and jib point sheaves, etc., including those on the main boom, is considered part of the jib load. Maximum capacity on 3/4" - 6x25 IPS, IWRC is 13,000 lbs./line.

30 FOOT JIB	JIB POINT RADIUS: FEET	CAPACITIES IN POUNDS											JIB POINT RADIUS: FEET				
		BOOM LENGTH - FEET															
		70	80	90	100	110	120	130	140	150	160	170		180			
50*	16,000	16,000	16,000	16,000	16,000	16,000	16,000	16,000	16,000	16,000	16,000	16,000	16,000	16,000	16,000	16,000	50*
55	16,000	16,000	16,000	16,000	16,000	16,000	16,000	16,000	16,000	16,000	16,000	16,000	16,000	16,000	16,000	16,000	55
60	16,000	16,000	16,000	16,000	16,000	16,000	16,000	16,000	16,000	16,000	16,000	16,000	16,000	16,000	16,000	16,000	60
65	16,000	16,000	16,000	16,000	16,000	16,000	16,000	16,000	16,000	16,000	16,000	16,000	16,000	16,000	16,000	16,000	65
70	15,400	15,100	14,900	14,700	14,600	14,400	14,200	14,000	13,800	13,500	13,400	12,400	12,400	12,400	12,400	12,400	70
75	14,000	13,700	13,500	13,300	13,200	13,000	12,800	12,500	12,400	12,100	11,900	11,700	11,700	11,700	11,700	11,700	75
80	12,800	12,500	12,300	12,100	12,000	11,700	11,600	11,300	11,200	10,900	10,700	10,500	10,500	10,500	10,500	10,500	80
85		11,500	11,300	11,100	10,900	10,700	10,500	10,300	10,100	9,800	9,700	9,400	9,400	9,400	9,400	9,400	85
90			10,300	10,200	10,000	9,800	9,600	9,400	9,200	8,900	8,700	8,500	8,500	8,500	8,500	8,500	90
95			9,500	9,300	9,200	9,000	8,800	8,500	8,400	8,000	7,900	7,700	7,700	7,700	7,700	7,700	95
100				8,600	8,500	8,200	8,000	7,800	7,700	7,300	7,200	7,000	7,000	7,000	7,000	7,000	100
105				8,000	7,800	7,600	7,400	7,200	7,000	6,700	6,500	6,300	6,300	6,300	6,300	6,300	105
110					7,200	7,000	6,800	6,600	6,400	6,100	5,900	5,700	5,700	5,700	5,700	5,700	110
120						6,000	5,800	5,500	5,400	5,000	4,900	4,700	4,700	4,700	4,700	4,700	120
130							5,800	5,500	5,400	5,000	4,900	4,700	4,700	4,700	4,700	4,700	130
140								4,700	4,500	4,200	4,000	3,800	3,800	3,800	3,800	3,800	140

40 FOOT JIB	JIB POINT RADIUS: FEET	CAPACITIES IN POUNDS											JIB POINT RADIUS: FEET				
		BOOM LENGTH - FEET															
		70	80	90	100	110	120	130	140	150	160	170		180			
70*	11,000	11,000	11,000	11,000	11,000	11,000	11,000	11,000	11,000	11,000	11,000	11,000	11,000	11,000	11,000	11,000	70*
75	11,000	11,000	11,000	11,000	11,000	11,000	11,000	11,000	11,000	11,000	11,000	11,000	11,000	11,000	11,000	11,000	75
80	11,000	11,000	11,000	11,000	11,000	11,000	11,000	11,000	11,000	11,000	11,000	11,000	11,000	11,000	11,000	11,000	80
85	11,000	11,000	11,000	11,000	11,000	11,000	10,900	10,700	10,500	10,400	10,100	9,900	9,600	9,600	9,600	9,600	85
90	11,000	10,800	10,500	10,400	10,200	10,000	9,800	9,600	9,400	9,100	9,000	8,800	8,800	8,800	8,800	8,800	90
95		10,000	9,700	9,500	9,400	9,200	9,000	8,800	8,600	8,300	8,200	7,900	7,900	7,900	7,900	7,900	95
100			9,000	8,800	8,700	8,400	8,200	8,000	7,900	7,500	7,400	7,200	7,200	7,200	7,200	7,200	100
105			8,300	8,100	8,000	7,800	7,600	7,400	7,200	6,900	6,700	6,500	6,500	6,500	6,500	6,500	105
110				7,600	7,400	7,200	7,000	6,800	6,600	6,300	6,100	5,900	5,900	5,900	5,900	5,900	110
115					6,900	6,600	6,400	6,200	6,100	5,700	5,600	5,400	5,400	5,400	5,400	5,400	115
120					6,400	6,100	5,900	5,700	5,600	5,200	5,100	4,900	4,900	4,900	4,900	4,900	120
130							5,100	4,900	4,700	4,400	4,200	4,000	4,000	4,000	4,000	4,000	130
140								4,100	4,000	3,600	3,500	3,300	3,300	3,300	3,300	3,300	140
150										3,300	3,000	3,000	3,000	3,000	3,000	3,000	150

50 FOOT JIB	JIB POINT RADIUS: FEET	CAPACITIES IN POUNDS											JIB POINT RADIUS: FEET				
		BOOM LENGTH - FEET															
		70	80	90	100	110	120	130	140	150	160	170		180			
95*	8,000	8,000	8,000	8,000	8,000	8,000	8,000	8,000	8,000	8,000	8,000	8,000	8,000	8,000	8,000	8,000	95*
100	8,000	8,000	8,000	8,000	8,000	8,000	8,000	8,000	8,000	8,000	8,000	8,000	8,000	8,000	8,000	8,000	100
105		8,000	8,000	8,000	8,000	8,000	7,900	7,700	7,500	7,300	7,000	6,900	6,700	6,700	6,700	6,700	105
110			7,800	7,700	7,500	7,300	7,100	6,900	6,700	6,400	6,300	6,100	6,100	6,100	6,100	6,100	110
115				7,300	7,100	7,000	6,700	6,600	6,300	6,200	5,900	5,700	5,700	5,700	5,700	5,700	115
120					6,600	6,500	6,200	6,100	5,800	5,700	5,400	5,200	5,200	5,200	5,200	5,200	120
125						6,000	5,800	5,600	5,400	5,200	4,900	4,800	4,800	4,800	4,800	4,800	125
130						5,600	5,400	5,200	5,000	4,800	4,500	4,400	4,400	4,400	4,400	4,400	130
135							5,000	4,800	4,600	4,400	4,100	3,900	3,700	3,700	3,700	3,700	135
140								4,500	4,200	4,100	3,700	3,600	3,400	3,400	3,400	3,400	140
145								4,100	3,900	3,700	3,400	3,300	3,100	3,100	3,100	3,100	145
150									3,600	3,400	3,100	3,000	2,800	2,800	2,800	2,800	150

60 FOOT JIB	JIB POINT RADIUS: FEET	CAPACITIES IN POUNDS											JIB POINT RADIUS: FEET				
		BOOM LENGTH - FEET															
		70	80	90	100	110	120	130	140	150	160	170		180			
105*	4,000	4,000	4,000	4,000	4,000	4,000	4,000	4,000	4,000	4,000	4,000	4,000	4,000	4,000	4,000	4,000	105*
110		4,000	4,000	4,000	4,000	4,000	4,000	4,000	4,000	4,000	4,000	4,000	4,000	4,000	4,000	4,000	110
115			4,000	4,000	4,000	4,000	4,000	4,000	4,000	4,000	4,000	4,000	4,000	4,000	4,000	4,000	115
120				4,000	4,000	4,000	4,000	4,000	4,000	4,000	4,000	4,000	4,000	4,000	4,000	4,000	120
125					4,000	4,000	4,000	4,000	4,000	4,000	4,000	4,000	4,000	4,000	4,000	4,000	125
130						4,000	4,000	4,000	4,000	4,000	4,000	4,000	4,000	4,000	4,000	4,000	130
135							4,000	4,000	4,000	4,000	4,000	4,000	4,000	4,000	4,000	3,800	135
140								4,000	4,000	4,000	4,000	4,000	3,800	3,700	3,500	3,500	140
145									4,000	4,000	4,000	3,800	3,500	3,300	3,100	3,100	145
150										3,900	3,700	3,500	3,200	3,000	3,000	3,000	150



# JIB LIFTING CAPACITIES

MEETS  
ANSI B30.5  
REQUIREMENTS

# 2900WC

**JIB NO. 124 WITH 12'6" STRUT ON  
BOOM NO. 18 WITH OPEN THROAT TOP  
20' CRAWLERS EXTENDED AND BLOCKED**

**20 DEGREE JIB OFFSET ANGLE**

Chart supplements boom capacity chart No. 6774-A. Capacities are for freely suspended loads based on tipping, strength of structural components or other factors. Crane operator judgment must be used to allow for dynamic load effects of swinging, hoisting or lowering, as well as adverse operating conditions & physical machine depreciation.

Capacities do not exceed 75% of static tipping loads with machine on firm level surface. Capacities based on structural competence are denoted by shaded areas. Operating radius is horizontal distance from axis of rotation to center of vertical hoist line or load block. Weight of all load blocks, hooks, weight ball, slings, hoist lines beneath boom and jib point sheaves, etc., including those on the main boom, is considered part of the jib load. Maximum capacity on 3/4" - 6x25 IPS, IWRC is 13,000 lbs./line.

30 FOOT JIB	JIB POINT RADIUS: FEET	CAPACITIES IN POUNDS											JIB POINT RADIUS: FEET					
		BOOM LENGTH - FEET																
		70	80	90	100	110	120	130	140	150	160	170		180				
45*	16,000	16,000	16,000	16,000	16,000	16,000	16,000	16,000	16,000	16,000	16,000	16,000	16,000	16,000	16,000	16,000	16,000	45*
50	16,000	16,000	16,000	16,000	16,000	16,000	16,000	16,000	16,000	16,000	16,000	16,000	16,000	16,000	16,000	15,500	15,500	50
55	16,000	16,000	16,000	16,000	16,000	16,000	16,000	16,000	16,000	16,000	16,000	16,000	16,000	16,000	15,400	14,500	14,500	55
60	16,000	16,000	16,000	16,000	16,000	16,000	16,000	16,000	16,000	16,000	16,000	15,200	14,500	14,500	13,600	13,600	13,600	60
65	16,000	16,000	16,000	16,000	16,000	16,000	16,000	16,000	16,000	15,800	14,300	13,600	12,800	12,800	12,800	12,000	12,000	65
70	15,600	15,300	15,100	15,000	14,800	14,600	14,500	14,300	14,300	14,100	13,500	12,900	12,900	12,900	12,900	12,000	12,000	70
75		13,900	13,700	13,500	13,400	13,200	13,000	12,800	12,700	12,700	12,400	12,100	11,300	11,300	11,300	11,300	11,300	75
80		12,700	12,500	12,500	12,300	12,200	12,000	11,800	11,600	11,500	11,200	11,000	10,700	10,700	10,700	10,700	10,700	80
85				11,400	11,200	11,100	10,900	10,700	10,500	10,400	10,100	9,900	9,800	9,800	9,800	9,800	9,800	85
90				10,300	10,200	9,900	9,900	9,800	9,600	9,400	9,100	9,000	8,900	8,900	8,900	8,900	8,900	90
95					9,300	9,100	8,900	8,700	8,600	8,600	8,300	8,100	8,100	8,100	8,100	8,100	8,100	95
100						8,400	8,200	8,000	7,900	7,900	7,500	7,400	7,400	7,400	7,400	7,400	7,400	100
105							7,700	7,500	7,300	7,200	6,900	6,700	6,700	6,700	6,700	6,500	6,500	105
110								6,900	6,700	6,600	6,200	6,100	6,100	6,100	6,100	5,900	5,900	110
120										5,500	5,200	5,100	5,100	5,100	4,800	4,800	4,800	120
130											4,300	4,200	4,200	4,200	4,000	4,000	4,000	130

40 FOOT JIB	JIB POINT RADIUS: FEET	CAPACITIES IN POUNDS											JIB POINT RADIUS: FEET					
		BOOM LENGTH - FEET																
		70	80	90	100	110	120	130	140	150	160	170		180				
70*	11,000	11,000	11,000	11,000	11,000	11,000	11,000	11,000	11,000	11,000	11,000	11,000	11,000	11,000	11,000	11,000	11,000	70*
75	11,000	11,000	11,000	11,000	11,000	11,000	11,000	11,000	11,000	11,000	11,000	11,000	11,000	11,000	11,000	10,500	10,500	75
80	11,000	11,000	11,000	11,000	11,000	11,000	11,000	11,000	11,000	11,000	10,900	10,500	9,900	9,900	9,900	9,900	9,900	80
85	11,000	11,000	11,000	11,000	11,000	11,000	11,000	11,000	10,800	10,700	10,400	9,900	9,300	9,300	9,300	9,300	9,300	85
90			10,700	10,600	10,400	10,200	10,100	9,900	9,700	9,700	9,500	9,300	8,800	8,800	8,800	8,800	8,800	90
95			9,900	9,700	9,600	9,400	9,200	9,000	8,900	8,900	8,600	8,500	8,300	8,300	8,300	8,300	8,300	95
100				8,800	8,800	8,600	8,500	8,300	8,100	8,100	7,800	7,700	7,500	7,500	7,500	7,500	7,500	100
105					8,200	8,000	7,900	7,800	7,600	7,400	7,100	7,000	6,800	6,800	6,800	6,800	6,800	105
110						7,300	7,200	7,000	6,800	6,800	6,500	6,400	6,200	6,200	6,200	6,200	6,200	110
115							6,600	6,400	6,300	6,300	6,000	5,800	5,600	5,600	5,600	5,600	5,600	115
120							6,100	5,900	5,800	5,800	5,400	5,300	5,100	5,100	5,100	5,100	5,100	120
125								5,400	5,300	5,300	5,000	4,800	4,600	4,600	4,600	4,600	4,600	125
130										4,900	4,500	4,400	4,200	4,200	4,200	4,200	4,200	130
140												3,600	3,400	3,400	3,400	3,400	3,400	140

50 FOOT JIB	JIB POINT RADIUS: FEET	CAPACITIES IN POUNDS											JIB POINT RADIUS: FEET					
		BOOM LENGTH - FEET																
		70	80	90	100	110	120	130	140	150	160	170		180				
90*	8,000	8,000	8,000	8,000	8,000	8,000	8,000	8,000	8,000	8,000	8,000	8,000	8,000	8,000	8,000	8,000	8,000	90*
95		8,000	8,000	8,000	8,000	8,000	8,000	8,000	8,000	8,000	8,000	8,000	8,000	8,000	8,000	7,700	7,700	95
100			8,000	8,000	8,000	8,000	8,000	8,000	8,000	8,000	8,000	8,000	7,700	7,700	7,700	7,700	7,700	100
105				8,000	8,000	8,000	8,000	8,000	8,000	8,000	8,000	7,800	7,600	7,600	7,600	7,600	7,600	105
110					7,800	7,700	7,500	7,300	7,100	7,000	6,700	6,600	6,400	6,400	6,400	6,400	6,400	110
115						7,100	6,900	6,800	6,600	6,400	6,100	6,000	5,800	5,800	5,800	5,800	5,800	115
120							6,400	6,300	6,100	5,900	5,600	5,500	5,300	5,300	5,300	5,300	5,300	120
125								5,800	5,600	5,500	5,200	5,100	5,000	5,000	5,000	5,000	5,000	125
130									5,100	5,000	4,700	4,600	4,400	4,400	4,400	4,400	4,400	130
135									4,700	4,600	4,300	4,200	4,200	4,200	4,200	4,200	4,200	135
140										4,200	4,000	3,900	3,800	3,800	3,800	3,800	3,800	140
145											3,600	3,500	3,500	3,500	3,500	3,500	3,500	145

60 FOOT JIB	JIB POINT RADIUS: FEET	CAPACITIES IN POUNDS											JIB POINT RADIUS: FEET					
		BOOM LENGTH - FEET																
		70	80	90	100	110	120	130	140	150	160	170		180				
100*	4,000	4,000	4,000	4,000	4,000	4,000	4,000	4,000	4,000	4,000	4,000	4,000	4,000	4,000	4,000	4,000	4,000	100*
105		4,000	4,000	4,000	4,000	4,000	4,000	4,000	4,000	4,000	4,000	4,000	4,000	4,000	4,000	4,000	4,000	105
110			4,000	4,000	4,000	4,000	4,000	4,000	4,000	4,000	4,000	4,000	4,000	4,000	4,000	4,000	4,000	110
115				4,000	4,000	4,000	4,000	4,000	4,000	4,000	4,000	4,000	4,000	4,000	4,000	4,000	4,000	115
120					4,000	4,000	4,000	4,000	4,000	4,000	4,000	4,000	4,000	4,000	4,000	4,000	4,000	120
125						4,000	4,000	4,000	4,000	4,000	4,000	4,000	4,000	4,000	4,000	4,000	4,000	125
130							4,000	4,000	4,000	4,000	4,000	4,000	4,000	4,000	4,000	4,000	4,000	130
135								4,000	4,000	4,000	4,000	4,000	4,000	4,000	4,000	4,000	4,000	135
140									4,000	4,000	4,000	3,900	3,700	3,700	3,700	3,700	3,700	140
150										4,000	3,700	3,400	3,300	3,300	3,300	3,300	3,300	150

\* These capacities apply for ALL lesser radii obtainable.



**JIB LIFTING CAPACITIES** MEETS  
ANSI B30.5  
REQUIREMENTS **2900WC**

**JIB NO. 124 WITH 12'6" STRUT ON  
 BOOM NO. 18 WITH OPEN THROAT TOP  
 20' CRAWLERS EXTENDED AND BLOCKED**

**30 DEGREE JIB OFFSET ANGLE**

Chart supplements boom capacity chart No. 6774-A. Capacities are for freely suspended loads based on tipping, strength of structural components or other factors. Crane operator judgment must be used to allow for dynamic load effects of swinging, hoisting or lowering, as well as adverse operating conditions & physical machine depreciation.

Capacities do not exceed **75%** of static tipping loads with machine on firm level surface. Capacities based on structural competence are denoted by shaded areas. Operating radius is horizontal distance from axis of rotation to center of vertical hoist line or load block. Weight of all load blocks, hooks, weight ball, slings, hoist lines beneath boom and jib point sheaves, etc., including those on the main boom, is considered part of the jib load. Maximum capacity on 3/4" - 6x25 IPS, IWRC is 13,000 lbs./line.

30 FOOT JIB	JIB POINT RADIUS: FEET	CAPACITIES IN POUNDS											JIB POINT RADIUS: FEET		
		BOOM LENGTH - FEET													
		70	80	90	100	110	120	130	140	150	160	170		180	
35*	16,000	16,000	16,000	16,000	16,000	16,000	16,000	16,000	16,000	16,000					35*
40	16,000	16,000	16,000	16,000	16,000	16,000	16,000	16,000	16,000	16,000					40
45	16,000	16,000	16,000	16,000	16,000	16,000	16,000	16,000	16,000	16,000					45
50	16,000	16,000	16,000	16,000	16,000	16,000	16,000	16,000	16,000	16,000	15,800	15,400			50
55	16,000	16,000	16,000	16,000	16,000	16,000	16,000	16,000	16,000	16,000	15,000	14,600	14,000		55
60	16,000	16,000	16,000	16,000	16,000	16,000	16,000	16,000	16,000	16,000	14,200	13,900	13,200		60
65		16,000	16,000	16,000	16,000	16,000	16,000	16,000	16,000	16,000	13,500	13,100	12,400		65
70			15,300	15,200	15,100	14,900	14,700	14,600	14,500	12,900	12,800	11,700		70	
75					13,600	13,400	13,300	13,100	13,000	12,200	11,700	11,000	11,000		75
80					12,400	12,200	12,000	11,800	11,700	11,400	11,100	10,400		80	
85						11,100	10,900	10,700	10,600	10,300	10,200	9,600		85	
90							10,000	9,800	9,700	9,400	9,200	9,100		90	
95								8,900	8,800	8,500	8,400	8,200		95	
100									8,000	7,700	7,600	7,400		100	
105										7,000	6,900	6,700		105	
110											6,300	6,100		110	

40 FOOT JIB	JIB POINT RADIUS: FEET	CAPACITIES IN POUNDS											JIB POINT RADIUS: FEET		
		BOOM LENGTH - FEET													
		70	80	90	100	110	120	130	140	150	160	170		180	
50*	11,000	11,000	11,000	11,000	11,000	11,000	11,000	11,000	11,000	11,000	11,000	11,000	11,000		50*
55	11,000	11,000	11,000	11,000	11,000	11,000	11,000	11,000	11,000	11,000	11,000	11,000	11,000		55
60	11,000	11,000	11,000	11,000	11,000	11,000	11,000	11,000	11,000	11,000	11,000	11,000	11,000		60
65	11,000	11,000	11,000	11,000	11,000	11,000	11,000	11,000	11,000	11,000	11,000	11,000	11,000		65
70	11,000	11,000	11,000	11,000	11,000	11,000	11,000	11,000	11,000	11,000	11,000	10,800	10,800		70
75		11,000	11,000	11,000	11,000	11,000	11,000	11,000	11,000	11,000	10,800	10,800	10,200		75
80			11,000	11,000	11,000	11,000	11,000	11,000	11,000	11,000	10,300	10,100	9,700		80
85				11,000	11,000	11,000	11,000	11,000	11,000	11,000	9,900	9,800	9,100		85
90					10,600	10,500	10,300	10,100	10,000	9,500	9,100	8,700		90	
95						9,600	9,400	9,300	9,100	8,900	8,700	8,200		95	
100							8,700	8,500	8,400	8,100	8,000	7,800		100	
105								7,800	7,700	7,400	7,300	7,100		105	
110									7,000	6,700	6,600	6,500		110	
115											6,000	5,900		115	

50 FOOT JIB	JIB POINT RADIUS: FEET	CAPACITIES IN POUNDS											JIB POINT RADIUS: FEET		
		BOOM LENGTH - FEET													
		70	80	90	100	110	120	130	140	150	160	170		180	
70*	8,000	8,000	8,000	8,000	8,000	8,000	8,000	8,000	8,000	8,000	8,000	8,000	8,000		70*
75	8,000	8,000	8,000	8,000	8,000	8,000	8,000	8,000	8,000	8,000	8,000	8,000	8,000		75
80	8,000	8,000	8,000	8,000	8,000	8,000	8,000	8,000	8,000	8,000	8,000	8,000	8,000		80
85		8,000	8,000	8,000	8,000	8,000	8,000	8,000	8,000	8,000	8,000	8,000	8,000		85
90			8,000	8,000	8,000	8,000	8,000	8,000	8,000	8,000	8,000	8,000	8,000		90
95				8,000	8,000	8,000	8,000	8,000	8,000	8,000	8,000	7,700		95	
100					8,000	8,000	8,000	8,000	8,000	8,000	7,800	7,300		100	
105						8,000	8,000	8,000	8,000	7,900	7,500	6,900		105	
110							7,500	7,400	7,300	7,000	6,900	6,600		110	
115								6,800	6,700	6,400	6,300	6,100		115	
120										5,900	5,800	5,600		120	
125											5,300	5,100		125	

60 FOOT JIB	JIB POINT RADIUS: FEET	CAPACITIES IN POUNDS											JIB POINT RADIUS: FEET		
		BOOM LENGTH - FEET													
		70	80	90	100	110	120	130	140	150	160	170		180	
90*	4,000	4,000	4,000	4,000	4,000	4,000	4,000	4,000	4,000	4,000	4,000	4,000	4,000		90*
95		4,000	4,000	4,000	4,000	4,000	4,000	4,000	4,000	4,000	4,000	4,000	4,000		95
100			4,000	4,000	4,000	4,000	4,000	4,000	4,000	4,000	4,000	4,000	4,000		100
105				4,000	4,000	4,000	4,000	4,000	4,000	4,000	4,000	4,000	4,000		105
110					4,000	4,000	4,000	4,000	4,000	4,000	4,000	4,000	4,000		110
115						4,000	4,000	4,000	4,000	4,000	4,000	4,000	4,000		115
120							4,000	4,000	4,000	4,000	4,000	4,000	4,000		120
125								4,000	4,000	4,000	4,000	4,000	4,000		125
130									4,000	4,000	4,000	4,000	4,000		130
140										4,000	4,000	4,000	4,000		140

\*These capacities apply for ALL lesser radii obtainable.



# LOAD LINE SPECIFICATIONS 2900WC

LIFTCRANE — BOOM NO. 18 WITH OPEN THROAT TOP

BOOM OR BOOM AND JIB LENGTH FEET	WHIP LINE LEFT FRONT DRUM FEET		LOAD LINE REAR DRUM FEET	MAXIMUM REQUIRED PARTS OF LINE
	1 PART	2 PART		
40	100	140	380	8
50	120	170	420	7
60	140	200	440	6
70	160	230	510	6
80	180	260	510	5
90	200	290	570	5
100	220	320	570	4
110	240	350	570	4
120	260	380	570	3
130	280	410	620	3
140	300	440	620	3
150	320	470	620	2
160	340	500	620	2
170	360	530	620	2
180	380	560	620	2
190	400	590		
200	420	620		
210	440	650		
220	460	---		
230	480	---		
240	500	---		

**LOAD LINE:** 3/4" — 6 x 25 Bright Super Tensile, Monitor AAA, Regular Lay, IWRC. Minimum Breaking Strength 32.3 Ton.  
 (Approx. Weight Per Ft. in Lbs. 1.04)

HOIST REEVING FOR MAIN LOAD BLOCK								
No. Parts of Line	1	2	3	4	5	6	7	8
Maximum Load — Lbs.	18,400	36,800	55,200	73,600	92,000	110,400	123,500	130,000

**WHIP LINE:** 3/4" — 6 x 25 Filler Wire, Improved Plow Steel, Regular Lay, IWRC. Minimum Breaking Strength 25.6 Ton.  
 Maximum Load = 13,000 lbs./Line.  
 (Approx. Weight Per Ft. in Lbs. 1.04)