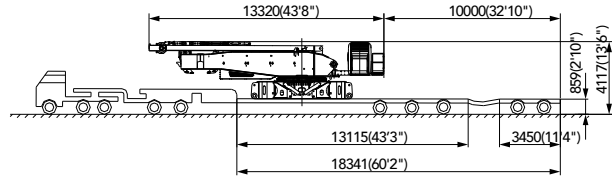
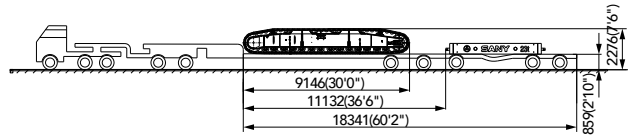


SCA2600A | TRANSPORT PLAN

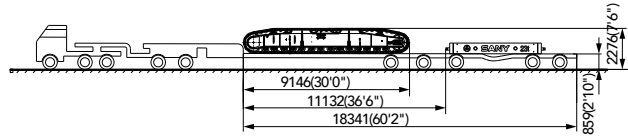
Trailer	▪ 498-16165
Rate Capacity	▪ 49.8t (109.8Klb)
Transported Parts	▪ Basic Machine
Transport Weight	▪ 45t (99.2Klb)
Quantity	▪ 1



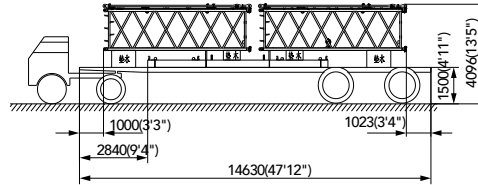
Trailer	▪ 498-16165
Rate Capacity	▪ 49.8t (109.8Klb)
Transported Parts	▪ Left track frame assembly ▪ Carbody counterweight
Transport Weight	▪ 45t (99.2Klb)
Quantity	▪ 1



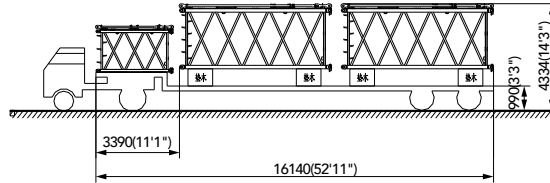
Trailer	▪ 498-16165
Rate Capacity	▪ 49.8t (109.8Klb)
Transported Parts	▪ Right track frame assembly ▪ Carbody counterweight
Transport Weight	▪ 45t (99.2Klb)
Quantity	▪ 1



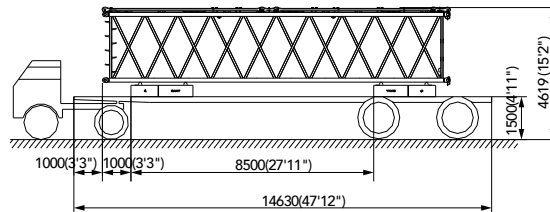
Trailer	▪ 20-14630
Rate Capacity	▪ 20t (44.1Klb)
Transported Parts	▪ Rear counterweight tray x1, ▪ 6m (19.7ft) luffing jib insert I, ▪ 6m (19.7ft) luffing jib insert
Transport Weight	▪ 17.7t (39.0Klb)
Quantity	▪ 1



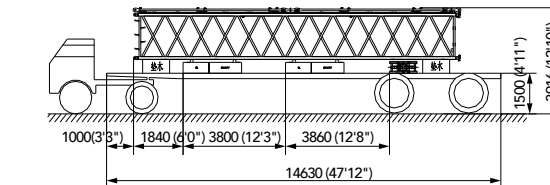
Trailer	▪ 20-16140
Rate Capacity	▪ 20t (44.1Klb)
Transported Parts	▪ 6m (19.7ft) boom insert x2, ▪ 3m (9.8ft) luffing jib insert x1
Transport Weight	▪ 5t (11Klb)
Quantity	▪ 1



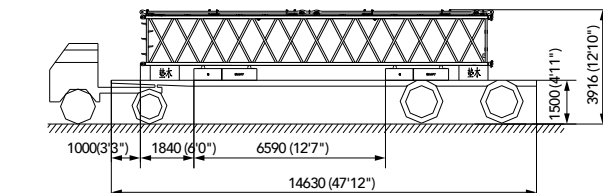
Trailer	▪ 20-14630
Rate Capacity	▪ 20t (44.1Klb)
Transported Parts	▪ CWT block x2, ▪ 12m (39.4ft) boom insert x1
Transport Weight	▪ 15.7t (51.5Klb)
Quantity	▪ 5



Trailer	▪ 20-14630
Rate Capacity	▪ 20t (44.1Klb)
Transported Parts	▪ CWT block x2, ▪ 12m (39.4ft) luffing jib insert x1, ▪ 50t (164.0Klb) hook x1
Transport Weight	▪ 15.2t (49.9Klb)
Quantity	▪ 1



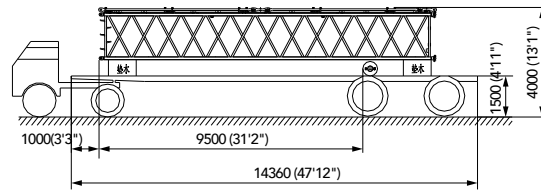
Trailer	▪ 20-14630
Rate Capacity	▪ 20t (44.1Klb)
Transported Parts	▪ CWT block x2 ▪ 12m (39.4ft) luffing jib insert x1
Transport Weight	▪ 13.5t (44.3Klb)
Quantity	▪ 1



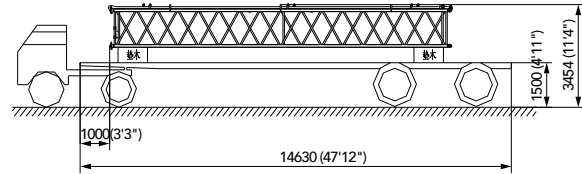
Specifications are subject to change without prior notification.

SCA2600A | TRANSPORT PLAN

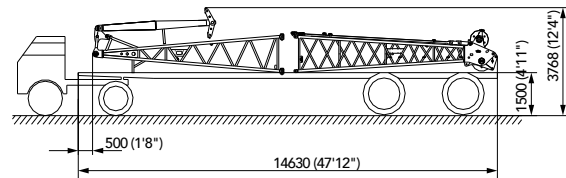
Trailer	▪ 20-14630
Rate Capacity	▪ 20t (44.1Klb)
Transported Parts	▪ 12m (39.4ft) luffing jib insert ×1 ▪ 16t (52.5Klb) hook ×1
Transport Weight	▪ 3t (9.8Klb)
Quantity	▪ 1



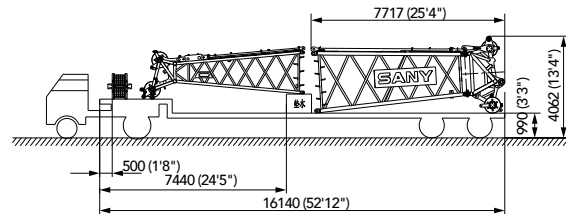
Trailer	▪ 20-14630
Rate Capacity	▪ 20t (44.1Klb)
Transported Parts	▪ 11.5m (37.7ft) fixed jib insert ×1
Transport Weight	▪ 1.3t (4.3Klb)
Quantity	▪ 2



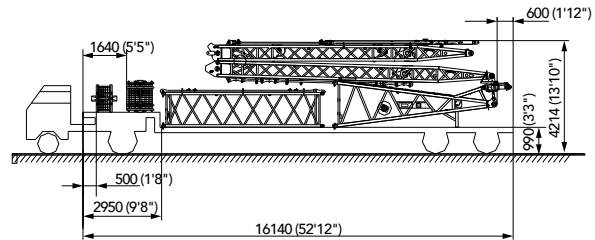
Trailer	▪ 20-14630
Rate Capacity	▪ 20t (44.1Klb)
Transported Parts	▪ Fixed jib base and mast ×1 ▪ Fixed jib top ×1
Transport Weight	▪ 2.6t (8.5Klb)
Quantity	▪ 2



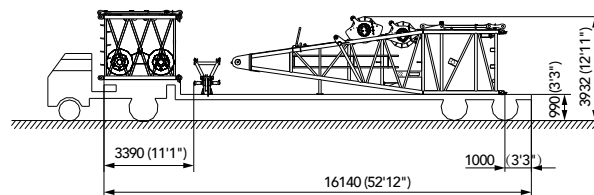
Trailer	▪ 20-16140
Rate Capacity	▪ 20t (44.1Klb)
Transported Parts	▪ 160t (525.0Klb) hook ×1 ▪ Tapered boom insert ×1 ▪ Boom top (with sheave block) ×1 ▪ Luffing jib top ×1
Transport Weight	▪ 13t (42.7Klb)
Quantity	▪ 1



Trailer	▪ 20-16140
Rate Capacity	▪ 20t (44.1Klb)
Transported Parts	▪ Luffing jib base and front and rear mast combo ×1, ▪ 100t (328.1Klb) hook ×1, ▪ 260t (853.0Klb) hook ×1, ▪ 6m (19.7ft) fixed jib insert ×1.
Transport Weight	▪ 13.5t (29.8Klb)
Quantity	▪ 1



Trailer	▪ 20-16140
Rate Capacity	▪ 20t (44.1Klb)
Transported Parts	▪ Boom base ×1, ▪ 3m (9.8ft) boom insert ×1, ▪ Upper boom point ×1, ▪ Trolley ×1
Transport Weight	▪ 16.7t (54.8Klb)
Quantity	▪ 1



Specifications are subject to change without prior notification.