

31' 4 7/8"

- A Overall width (front) 31' 0 1/2"
- B Overall height (cattler cab) 10' 0"
- H Overall height (operator's cab) 10' 3 1/2"
- C Trill swing 11' 0"
- D Centerline of rotation to center of boom pivot 8' 0"
- E of boom pivot to ground 8' 2"
- F Overall height (main winch) 11' 11 1/2"
- G Overall height (boom horizontal) 11' 7 1/4"
- H Top of front bumper to ground 4' 6 1/2"
- I Center of front bogie to front of carrier 6' 4"
- J Center of front bogie to center of rear bogie 18' 7 1/4"
- K Overall length of carrier 31' 9 1/4"
- H Center of rear bogie to center of rotation 9' 11 1/4"
- P Distance between axles (front bogie) 4' 6"
- Q Distance between axles (rear bogie) 4' 6"
- R Ground clearance (rear axle) 1' 1 1/2"
- S Track (front) 8' 3 1/2"
- T Track (rear) 8' 4"
- U Overall width (rear) 11' 0"
- V Overall length of outriggers 22' 0"
- W Overall length of outriggers 21' 0"
- X Overall length (boom retracted) 39' 8"
- Y Front of carrier to end of boom 7' 8"

LOAD CAPACITY IN POUNDS

Operating Radius in ft.	OVERSIGHT HOIST REAR WITH OUTRIGGERS						
	33	43	57	69	81	93	103
12	130,000	92,600	72,600	62,400			
10	110,000	81,800	67,200	59,000	57,000		
20	83,500	71,500	60,800	52,600	44,800	40,500	
25	68,000	62,000	56,600	46,400	39,000	34,300	30,000
30		47,000	40,400	41,300	36,300	31,000	25,400
35		35,200	33,200	32,500	30,000	28,000	23,400
40		28,600	20,600	25,500	20,500	24,000	21,200
45			23,800	22,800	23,500	21,600	19,400
50			20,200	20,200	20,200	20,200	17,700
60				14,000	14,000	14,000	14,500
70					11,200	11,200	11,200
80						8,200	8,200
90							6,500
100							4,000

LOAD CAPACITY IN POUNDS

Hoist Angle	OVERSIGHT HOIST REAR WITH OUTRIGGERS			
	33	43	57	69
76°	10,000	8,200	6,000	3,500
73°	9,000	5,100	4,600	3,600
69°	8,000	4,900	4,000	3,250
65°	7,300	4,850	3,700	3,080
63°	6,000	4,750	3,480	2,900
60°	6,500	4,700	3,200	2,700
55°	6,000	4,850	2,900	2,500
50°	5,600	4,400	2,700	2,300
40°	6,000	4,150	2,600	2,100
30°	4,700	4,000	2,400	2,000

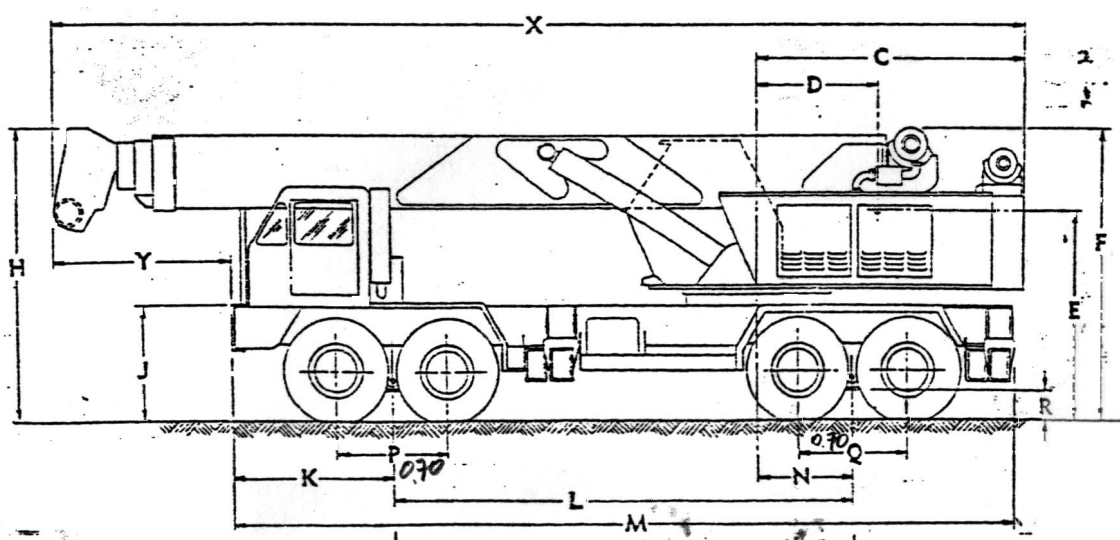
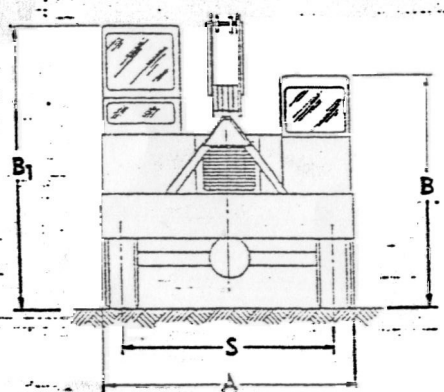
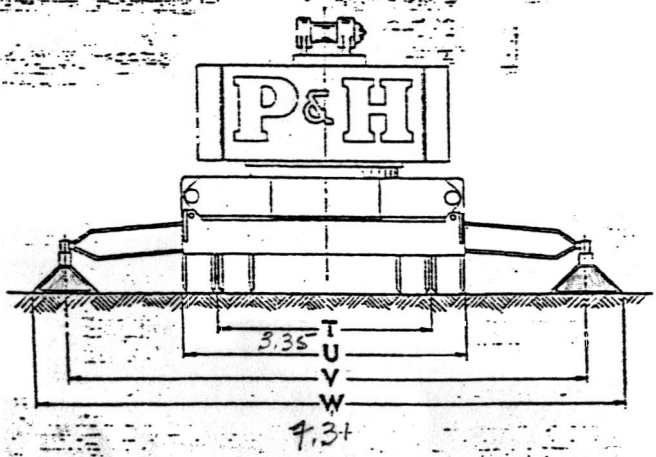
HOIST REELING												
PSR # 16 --- Rope Diameter --- 3/4 In. Breaking Strength --- 51,000 lbs.						PSR # 10-1 Rope Diameter --- 9/16 In. Breaking Strength --- 29,400 lbs.						
PERMISSIBLE TIRE LOAD IN POUNDS												
Pace Time	1	2	3	4	5	6	7	8	9	10	11	12
PSR #16	12,500	25,000	37,500	50,000	62,500	75,000	87,500	100,000	112,500	125,000	137,500	150,000
PSR #10-1	7,500	15,000	22,500	30,000	37,500	45,000						

NOTE: OPERATION OF THIS EQUIPMENT IN EXCESS OF LOAD RATINGS AND DISREGARD OF INSTRUCTIONS VOIDS THE WARRANTY.

NOTE

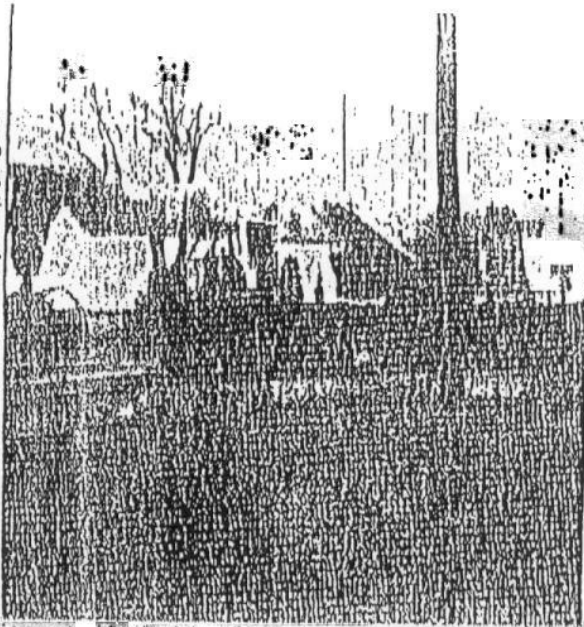
All information on this page is for reference only, and subject to change without notice.

A	Overall width (front)	9'-9-1/2"
B	Overall height (carrier cab)	10'-5"
B ₁	Overall height (operator's cab)	9'-3-7/16"
C	Tail swing	11'-0"
D	Centerline of rotation to center of boom pivot	5'-0"
E	Center of boom pivot to ground	8'-2"
F	Overall height (main winch)	11'-11-1/2"
H	Overall height (boom horizontal)	11'-7-1/4"
J	Top of front bumper to ground	4'-6-3/16"
K	Center of front bogie to front of carrier	6'-4"
L	Center of front bogie to center of rear bogie	18'-7-3/4"
M	Overall length of carrier	31'-9-1/2"
N	Center of rear bogie to center of rotation	3'-11-1/4"
P	Distance between axles (front bogie)	4'-6"
Q	Distance between axles (rear bogie)	4'-6"
R	Ground clearance (rear axle)	1'-1-1/2"
S	Track (front)	8'-3-1/2"
T	Track (rear)	8'-4"
U	Overall width (rear)	11'-0"
V	Effective length of outriggers	22'-0"
W	Overall length of outriggers	24'-6"
X	Overall length (boom retracted)	39'-8"
Y	Front of carrier to end of boom	7'-8"



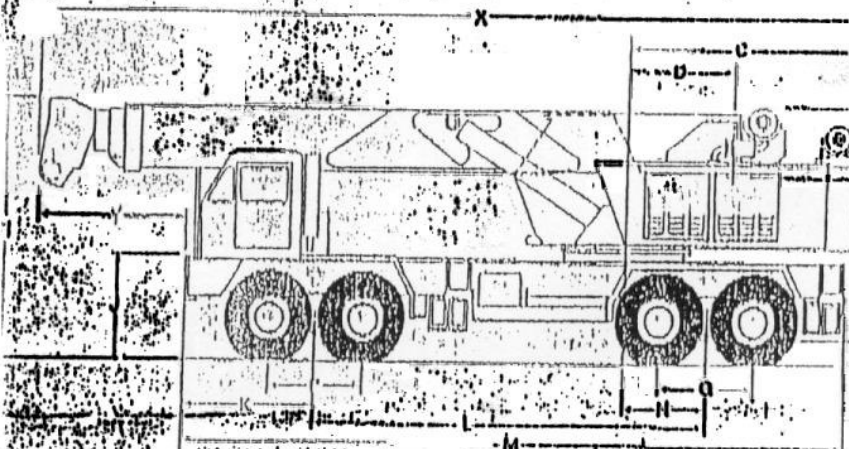
AXLE LOADINGS			
36,020	WITH COUNTERWEIGHT	73,980	G.V.W. 110,000
40,055	WITHOUT COUNTERWEIGHT	57,945	G.V.W. 98,000

Figure 1-2. Model T-650 Dimensions and Clearances



OSD

117,000 4/13/85



- A -- width (front) 9'-9 1/2"
- Overall height (operator's cab) 10'-0"
- Overall height (operator's cab) 10'-9 1/2"
- Tall swing 11'-0"
- Centerline of rotation to center of boom pivot 8'-0"
- Center of boom pivot to ground 8'-2"
- Overall height (main winch) 11'-11 1/2"
- Overall height (boom horizontal) 11'-7 1/2"
- Top of front bumper to ground 4'-6 1/2"
- Center of front bogie to front of carrier 9'-4"
- Center of front bogie to center of rear bogie 18'-7 1/2"
- Overall length of carrier 31'-9 1/2"
- H -- Center of rear bogie to center of rotation 3'-11 1/2"
- F -- Distance between axles (front bogie) 4'-0"
- Q -- Distance between axles (rear bogie) 4'-6"
- G -- Ground clearance (rear axle) 2'-3 1/2"
- J -- Track (front) 8'-3 1/2"
- I -- Track (rear) 8'-4"
- U -- Overall width (rear) 11'-0"
- V -- Overall length of outriggers 22'-0"
- W -- Overall length of outriggers 22'-0"
- X -- Overall length (boom retracted) 30'-0"
- Y -- Front of carrier to end of boom 7'-0"

GRUA P&H T-650 DE 65 TONELADAS

RADIO FT.	LARGO PLUMA						
	33'	45'	57'	69'	81'	93'	105'
12	130,000	92,600	72,600	62,400			
15	110,000	81,800	67,200	58,000	57,000		
20	83,500	71,500	60,800	52,500	44,800	40,500	
25	68,000	62,000	55,800	48,400	39,000	34,300	30,000
30		47,000	46,400	41,300	36,300	31,000	25,400
35		35,200	35,200	32,500	30,000	28,000	23,400
40		28,600	28,800	28,600	26,500	24,000	21,200
45			23,800	23,800	23,800	21,600	19,400
50			20,200	20,200	20,200	20,200	17,700
60				14,800	14,800	14,800	14,800
70					11,200	11,200	11,200
80						8,200	8,200
90							5,500
100							4,000

GRUA P&H T-650

GRADOS ANGULO	27 PIES JIB		45 PIES JIB	
	RECTO	30o	RECTO	8o
75	10,000	5,200	6,000	3,800
73	9,000	5,100	4,600	3,600
69	8,000	4,950	4,000	3,250
66	7,300	4,850	3,700	3,050
63	6,800	4,750	3,450	2,900
60	6,500	4,700	3,200	2,700
55	6,000	4,550	2,900	2,500
50	5,500	4,400	2,700	2,300
40	5,000	4,150	2,600	2,100
30	4,700	4,000	2,400	2,000