

298

HYLAB

HSL
SERIES

230 ton (208.6 mt) Lattice Crawler Crane

- 365 hp Tier III Engine
- Transport weight is 87,100lbs with carbody, live mast with self assemble cylinder, and hoist rope
- HSL counterweight removal system, lowers entire counterweight assembly to ground no blocking required
- Highly functional and comfortable cab with latest rated capacity limiter with color graphics
- Self assembles (no helper crane needed)
- Optional attachments:
 - Freefall system with internal wet brakes
 - Luffing attachment
 - Auxiliary tip
 - Offsettable jib



Link-Belt
CRANES

298 HSL SERIES

HYLAB

230 ton (208.6 mt) Lattice Crawler Crane

- Main transport weight is 87,100 lbs (39 507.9 kg) with carbody live mast with self assembly cylinder, and hoist rope.
- 11-piece upper counterweight system designed with the HSL removal system
- Latest rated capacity limiter with color graphics
- Superior capacities
- Optional luffer

Counterweight "biscuit" design allows for various configuration options and easy blend outs for transport

Hydraulic actuated hook & pin side frames for easy installation

Rope guards and polyamide sheaves with sealed bearing

Remote-control operated hydraulic counterweight removal cylinders

Compact, high torque final drive with multi-speed travel

Non-slip safety strips, full-length catwalks and sideframe steps provide sure-footed access to the crane upper

- Full contact 48" track shoe design for maximum contact area minimizes ground bearing pressure
- Optional 60" track shoes

"Quick Draw" self-erecting cylinder in live mast

Spring-loaded backstops with redundant backstop limit switch for added protection





Excellent access for all routine engine and hydraulic maintenance

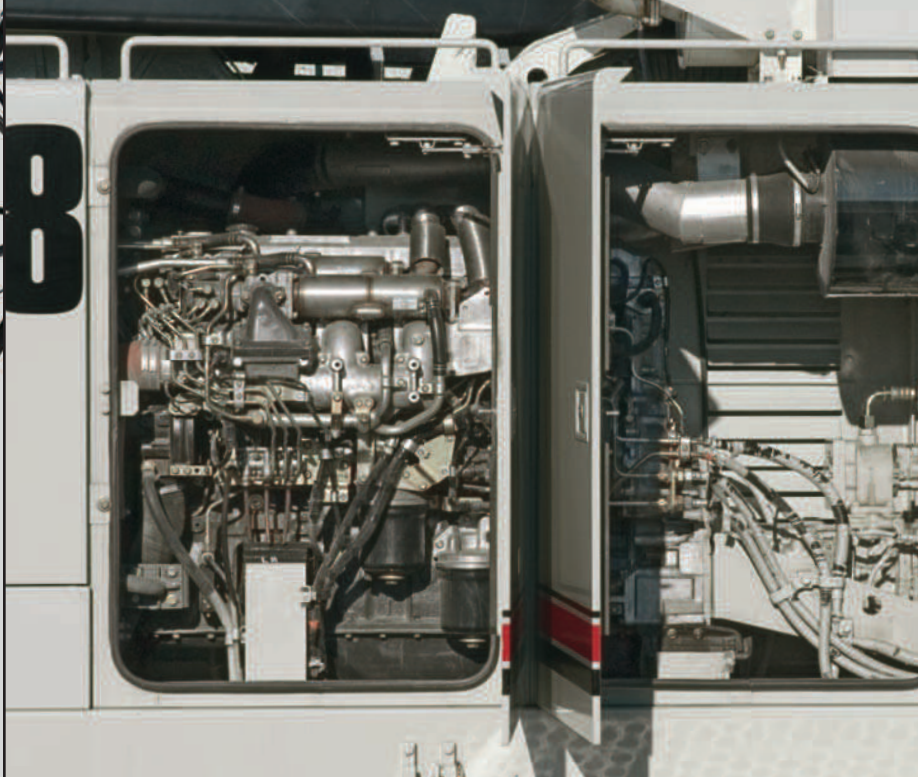
Heavy-duty power for the most demanding jobs

- **Matching front and rear drums:**
 - Max line pull available 59,234 lbs (26 869 kg) power up and down w/Automatic brake standard
 - Max line speed 559.5 ft/min (170.5 m/min)
 - 28mm wire rope
 - 35" (.9m) wide hoist drums with Independent speed control
- **Seven pump hydraulic package** provides smooth performance for multi function operation
- **Optional free fall** available with LBCE exclusive "wet brake design"

- **Sealed Idlers & (oil-filled) upper & lower rollers,** Replaceable upper carrier wear bar.

Options include:

- **Optional third drum** mounted in the boom base features power up/down mode with automatic brake. Provides auxiliary hoist line for luffer application.





Highly functional and comfortable cab

- HSL capacity limiter with high visibility color graphic display
- 18,600 BTU air-conditioning
- 19,000 BTU hot water heating
- Six-way adjustable seat
- Easy-to-read backlit gauges
- Adjustable armrest console with pilot-operated single-axis controls
- Hydraulic pilot controls for variable hoist, swing and travel performance
- Variable hydraulic output from main pumps controlled by variable hand throttle for infinite control
- Full function rated capacity limiter monitored by load sensing via boom hoist mounted load cell

Outstanding standard features

- **Automatic brake mode** offer power up and down operation modes
- **Dual swing drives** provide smooth swing control
- **Full length removable catwalks** on both sides of the upper house

Luffer ready!

- Conventional boom extensions can be used as **luffing boom extensions**
- **3rd drum optional second hoist line**
- **Rear drum luffing jib hoist**
- Straight out or **fold-under** luffer assembly



298 HSL attachments are versatile and strong

Conventional Tubular Boom

- 60-300 ft (18.29 m - 91.44)
- 60 ft (18.29 m) two-piece design that utilizes a 30 ft (9.14 m) base section and a 30 ft (9.14 m) open throat top section
- Maximum tip height of tube boom + jib: 363 ft 3 in (110.72 m)

Fixed Jib

- 30 ft to 90 ft (9.14 - 27.43 m) Fixed Jib
- Offset angles at 5, 15, 25 degree

Auxiliary Tip Extension 5 ft (1.5 m)

- Designed to provide clearance between working hoist lines
- Maximum capacity is 20 ton (18.14 mt).

Luffing Boom

- Maximum luffing attachment: 180 ft + 200 ft (54.9 m + 60.9 m)
- 384 ft (117.04 m) Maximum working height
- Luffing cap and fan post assembly transports as one piece

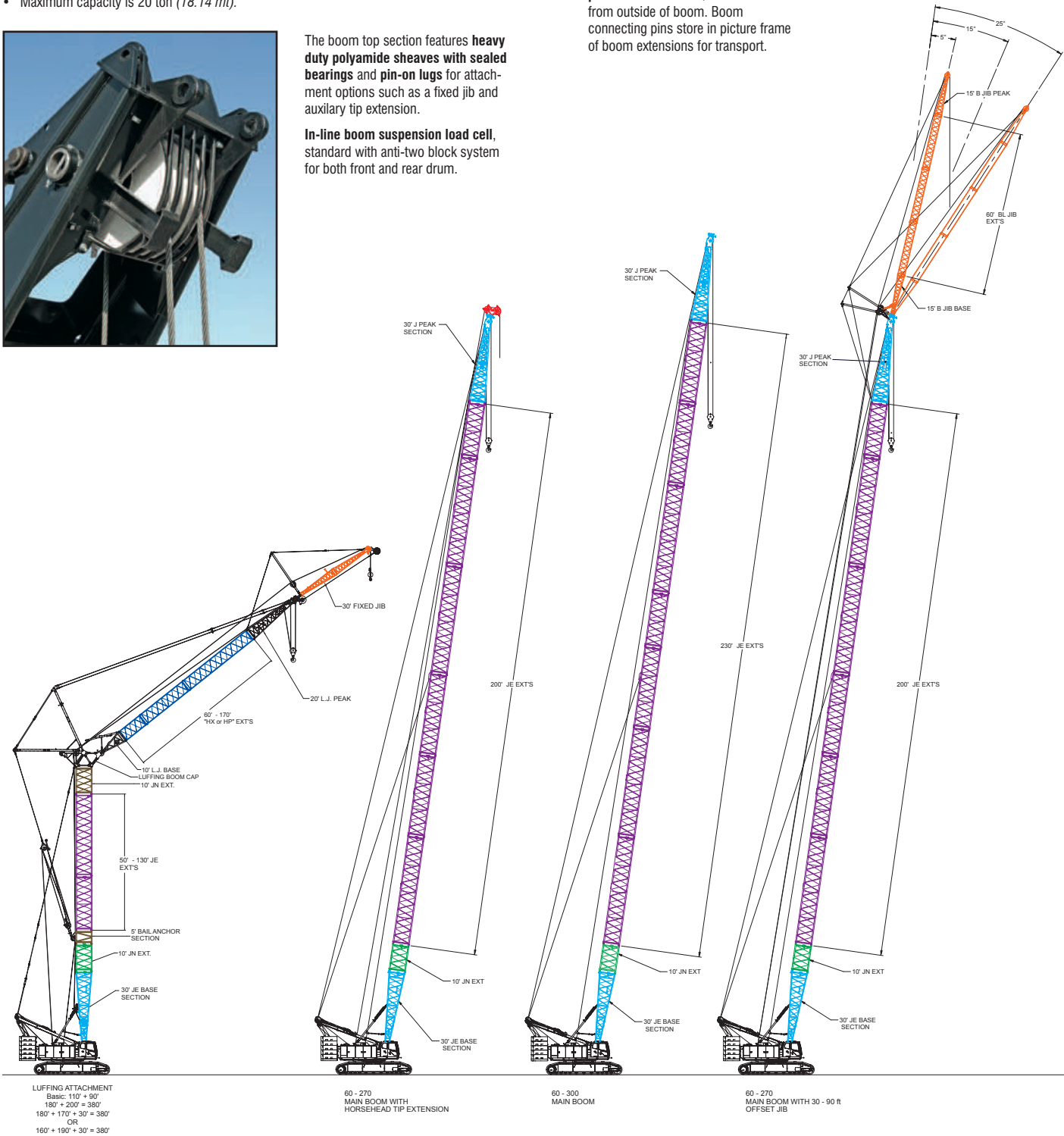


↑ Double tapered connecting pins allow installation/removal from outside of boom. Boom connecting pins store in picture frame of boom extensions for transport.



The boom top section features **heavy duty polyamide sheaves with sealed bearings and pin-on lugs** for attachment options such as a fixed jib and auxiliary tip extension.

In-line boom suspension load cell, standard with anti-two block system for both front and rear drum.





Transportability and assembly

- Main transport load with upper crane body, live mast & ropes — 87,100 lbs (39 507.9 kg)
- 11-piece upper counterweight system is designed for easy handling and blended load-outs
- Innovative counterweight removal system
- Pendants can be stowed on boom extensions for transport
- Standard left and right catwalks easily remove for transport

“Quick Draw”

Standard quick draw single hydraulic cylinder mounted in live mast is used for self-assembly and disassembly — no need for a helper crane or special rigging block — includes lifting sling

Counterweights lower completely to the ground

→ Pull counterweight pin & lower counterweights to ground

↓ Unlatch cylinders and tray from counterweight then retract cylinders for transport



Link-Belt
C R A N E S

Lexington, Kentucky
www.linkbelt.com

® Link-Belt is a registered trademark. Copyright 2007. All rights reserved. We are constantly improving our products and therefore reserve the right to change designs and specifications.

Litho in U.S.A. 12/07 580 #4346

Courtesy of Crane.Market