



Link-Belt
C R A N E S

298 HYLAB
HSL
SERIES

250 ton (226.8 mt) Lattice Crawler Crane

- 365 hp Tier III Engine
- Transport weight is 87,100lbs with carbody, live mast with self assemble cylinder, and hoist rope
- HSL counterweight removal system, lowers entire counterweight assembly to ground no blocking required
- Highly functional and comfortable cab with latest rated capacity limiter with color graphics
- Standard upper guard rails
- Self assembles (no helper crane needed)
- Options:
 - Freefall system with internal wet brakes
 - Luffing attachment
 - Auxiliary tip
 - Offsettable jib
 - 60 ft (152.4 cm) shoes



298 HYLAB HSL SERIES

250 ton (226.8 mt) Lattice Crawler Crane

Heavy-duty power for the most demanding jobs

- Main transport weight is 87,100 lbs (39 507.9 kg) with carbody live mast with self assembly cylinder, and hoist rope.
- 11-piece upper counterweight system designed with the HSL removal system
- Latest rated capacity limiter with color graphics
- Superior capacities
- Optional luffer
- Matching front and rear drums:
 - Max line pull available 59,234 lbs (26 869 kg) power up and down w/Automatic brake standard
 - Max line speed 559.5 ft/min (170.5 m/min)
 - 28mm wire rope
 - 35" (.9m) wide hoist drums with Independent speed control
- Seven pump hydraulic package provides smooth performance for multi function operation
- Optional free fall available with LBCE exclusive "wet brake design"
- Sealed Idlers & (oil-filled) upper & lower rollers, Replaceable upper carrier wear bar.

Outstanding standard features

- Automatic brake mode offer power up and down operation modes
- Dual swing drives provide smooth swing control
- Full length removable catwalks on both sides of the upper house

Options include:

- Optional third drum mounted in the boom base features power up/down mode with automatic brake. Provides auxiliary hoist line for luffer application.

Rope guards and polyamide sheaves with sealed bearing

Remote-control operated hydraulic counterweight removal cylinders

Standard foldable upper guard rail

"Quick Draw" cylinder in live

Counterweight "biscuit" design allows for various configuration options and easy blend outs for transport

Non-slip safety strips, full-length catwalks and sideframe steps provide sure-footed access to the crane upper

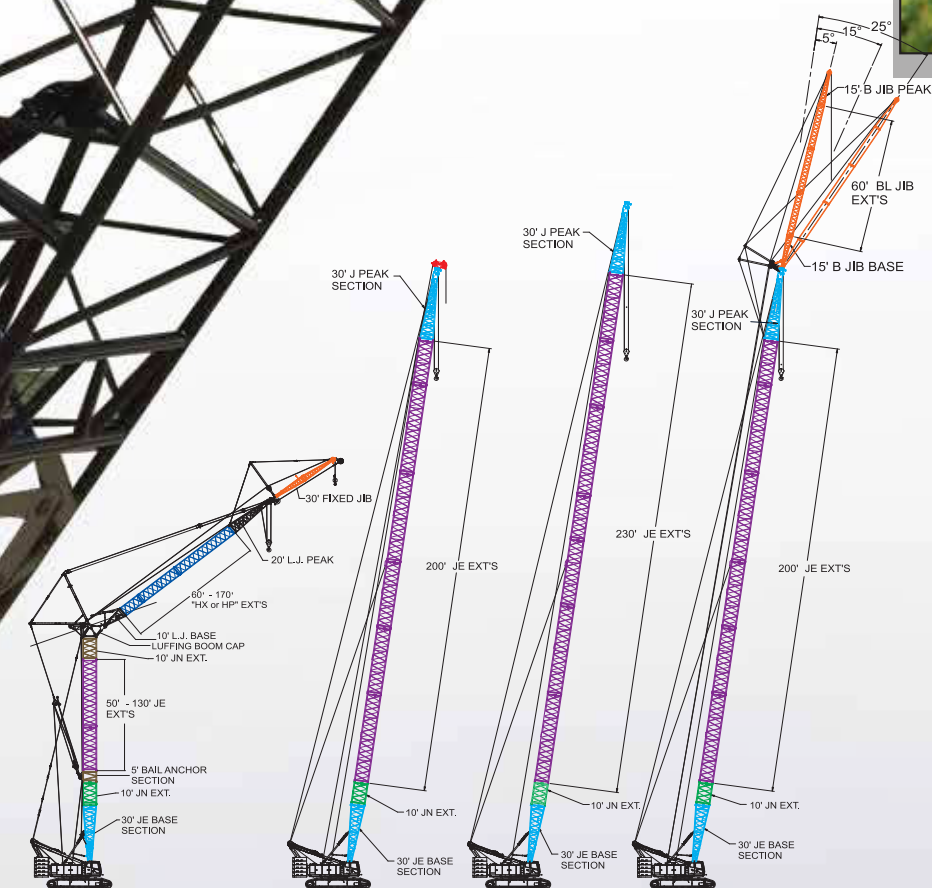
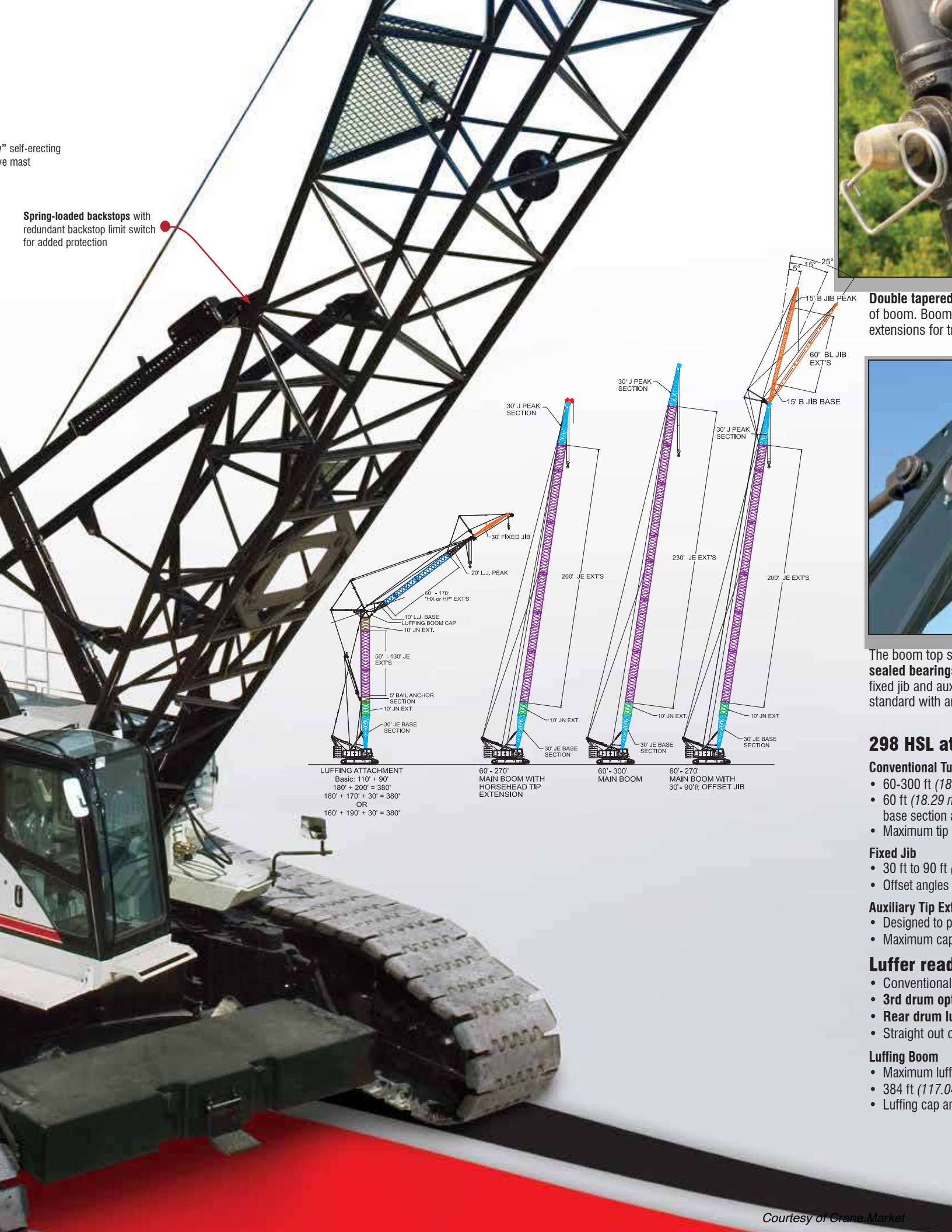
Compact, high torque final drive with multi-speed travel

Hydraulic actuated hook & pin side frames for easy installation



" self-erecting
re mast

Spring-loaded backstops with
redundant backstop limit switch
for added protection



LUFFING ATTACHMENT
Basic: 110' + 90'
180' + 200' = 380'
180' + 170' + 30' = 380'
OR
160' + 190' + 30' = 380'

60'-270' MAIN BOOM WITH HORSEHEAD TIP EXTENSION

60'-300' MAIN BOOM

60'-270' MAIN BOOM WITH 30'-90' OFFSET JIB

Double tapered
of boom. Boom
extensions for t

The boom top s
sealed bearing
fixed jib and aux
standard with a

298 HSL at

Conventional Tu

- 60-300 ft (18.29 m)
- 60 ft (18.29 m) base section
- Maximum tip

Fixed Jib

- 30 ft to 90 ft
- Offset angles

Auxiliary Tip Ext

- Designed to p
- Maximum cap

Luffer read

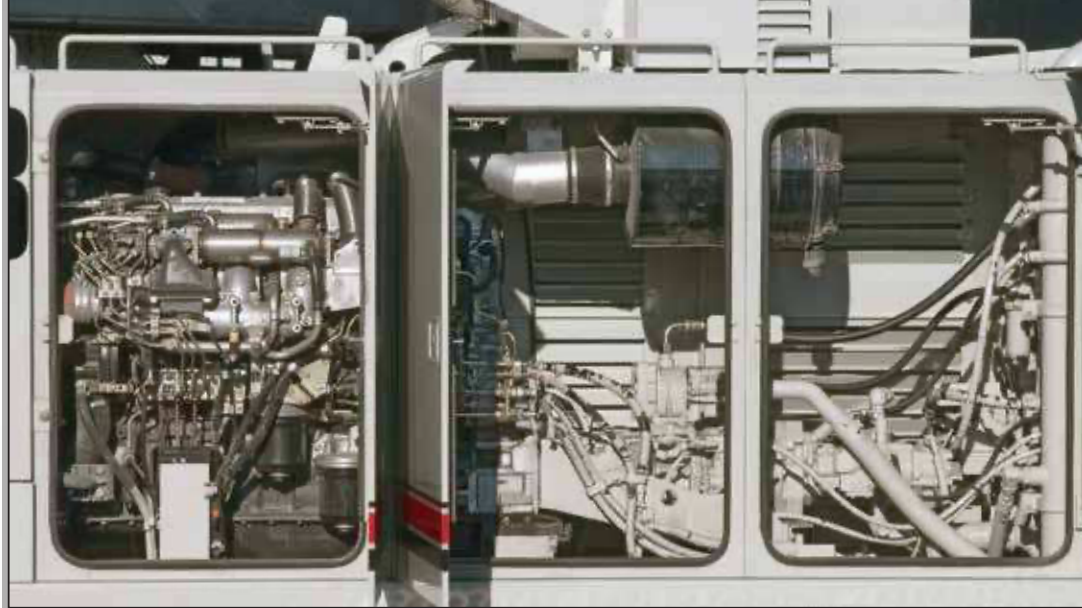
- Conventional
- 3rd drum op
- Rear drum l
- Straight out c

Luffing Boom

- Maximum luff
- 384 ft (117.0 m)
- Luffing cap ar



connecting pins allow installation/removal from outside
connecting pins store in picture frame of boom
transport.



Excellent access for all routine engine and hydraulic maintenance



ection features **heavy duty polyamide sheaves with**
s and pin-on lugs for attachment options such as a
xiliary tip extension. **In-line boom suspension load cell,**
anti-two block system for both front and rear drum.

Attachments are versatile and strong

ular Boom
29 m - 91.44)
n) two—piece design that utilizes a 30 ft (9.14 m)
and a 30 ft (9.14 m) open throat top section
height of tube boom + jib: 363 ft 3 in (110.72 m)

(9.14 - 27.43 m) fixed jib
at 5, 15, 25 degree

ension 5 ft (1.5 m)
provide clearance between working hoist lines
capacity is 20 ton (18.14 mt).

ly!
boom extensions can be used as **luffing boom extensions**
ditional second hoist line
luffing jib hoist
or **fold-under** luffer assembly

ing attachment: 180 ft + 200 ft (54.9 m + 60.9 m)
4 m) maximum working height
nd fan post assembly transports as one piece





Highly functional and comfortable cab

- HSL capacity limiter with high visibility color graphic display
- 18,600 BTU air-conditioning
- 19,000 BTU hot water heating
- Six-way adjustable seat
- Easy-to-read backlit gauges
- Adjustable armrest console with pilot-operated single-axis controls
- Hydraulic pilot controls for variable hoist, swing and travel performance
- Variable hydraulic output from main pumps controlled by variable hand throttle for infinite control
- Full function rated capacity limiter monitored by load sensing via boom hoist mounted load cell
- Rear view camera



Transportability and assembly

- Main transport load with upper crane body, live mast & ropes — 87,100 lbs (39 507.9 kg)
- 11-piece upper counterweight system is designed for easy handling and blended load-outs
- Innovative counterweight removal system
- Pendants can be stowed on boom extensions for transport
- Standard left and right catwalks easily remove for transport

“Quick Draw”

Standard quick draw single hydraulic cylinder mounted in live mast is used for self-assembly and disassembly — no need for a helper crane or special rigging block — includes lifting sling



Unlash cylinders and tray from counterweight than retract cylinders for transport



Pull counterweight pin & lower counterweights to ground



Counterweights lower completely to the ground



Link-Belt Construction Equipment Company is a leader in the design, manufacture, and sales of telescopic and lattice boom cranes with headquarters and manufacturing facilities in Lexington, Kentucky, USA. It is also a family of passionate professionals with a 135+ year legacy of innovation and cutting-edge technology.

Its manufacturing process, the Link Belt Production System, combines the principles of the Lean Production System with the high intensity, quick results Lean Sigma process. The system aggressively eliminates waste, enhances quality, creates a better product for the customer, and delivers it more quickly. Because of this process, Link-Belt has emerged as a dynamic and highly-focused market leader in crane design and product quality.

The 650,000-sq. ft. facility is the most modern crane manufacturing plant in North America. Recent capital investment projects will ensure that Link-Belt maintains that position for many years to come.

Your crane investment is always protected... with your Link-Belt distributor.

When you invest in a Link-Belt crane, you invest in a legacy of outstanding customer support dating back to 1874. The ultimate value of a machine begins with state-of-the-art design and quality manufacturing, but it is the excellent Link-Belt distributor product support that determines its long term value. This philosophy has earned Link-Belt cranes the enviable position of traditionally commanding some of the highest resale prices in the industry

“... to be recognized as a leader in customer service & satisfaction.”
— The Link-Belt Vision

Link-Belt
Preferred

As a member of Link-Belt Cranes user’s group, you will have access to:

- Online access to a comprehensive library of all parts, service and operator manuals for YOUR crane
- Interactive, live groundbearing calculations for YOUR crane
- Plus a vast array of information on new products, services and special offerings

Master Technician TRAINING PROGRAM

Link-Belt’s investment in the highly acclaimed Master Technician Training Program is further testimony to its commitment to highly trained, experienced service personnel. Technical schools are specifically designed to establish proficiency in three phases: fundamentals, machine systems, and diagnostics/repair. To further support these highly trained distributor personnel, Link-Belt has dedicated, full time factory technical advisors available with comprehensive machine records, drawings and technical publications to quickly isolate and resolve service issues.

Link-Belt
CRANES
GENUINE
PARTS

No one knows your Link-Belt crane better than our trained technical specialists and coupled with the energy of our customer parts representatives, no one in the crane industry provides faster, more efficient customer service. With state of the art computer information systems, distributors order Genuine Link-Belt Parts 24 hours a day, 7 days a week. Our dedicated 72,000 sq. ft. (6 689 m2) Parts Distribution Center is an integral part of our product support commitment where we invest in an extensive and well planned parts inventory. And all parts in stock ship the same business day.

FOR MORE INFORMATION, CONTACT YOUR AUTHORIZED LINK-BELT DISTRIBUTOR: