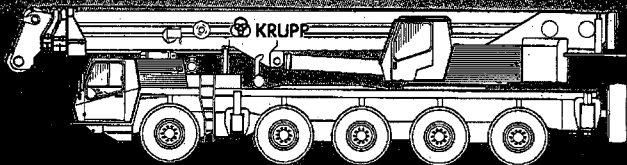




KRUPP

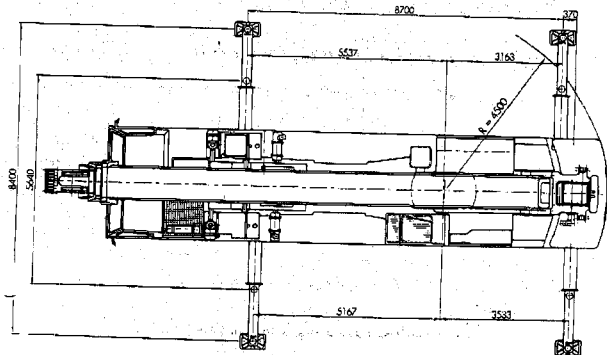
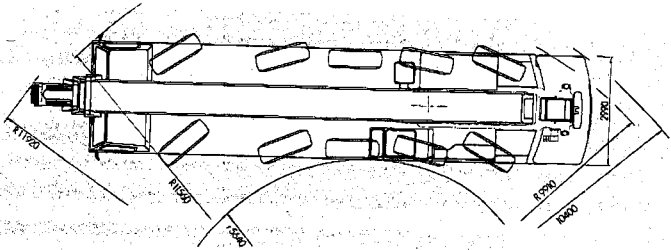
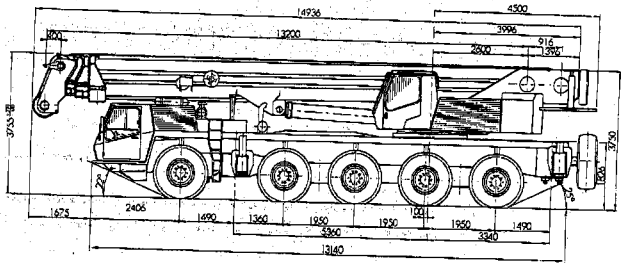
Alan Cain

Mobilkran



KMK 5100

Abmessungen Dimensions Encombremet



Carrier

Chassis:	Special KRUPP 5-axle carrier, all-welded torsion-resistant box-type construction in high strength steel.
Outriggers:	4 double hydraulically telescoping horizontal beams with vertical cylinders and outrigger pads. Independent horizontal and vertical movement control on each side of the chassis. Levelling device.
Engine:	Mercedes-Benz OM 424 Diesel, 12 cylinders, water-cooled, 309 kW (420 HP) at 2300 min ⁻¹ (80/1269/EWG), max. torque 1490 Nm at 1200 min ⁻¹ . Tank capacity: 800 l.
Transmission:	Allison 5-gear automatic powershift, CLBT 754.
Transfer case:	Transfer case with 2 speeds and longitudinal differential lock.
Axles:	5 axles. 1st, 2nd, 4th and 5th driven steering axes. 2nd, 4th and 5th planetary axes with transverse differential lock. 4th axle with longitudinal differential lock.
Suspension:	All axles with hydropneumatic suspension and hydraulic axle lock-out. All axles guided by longitudinal and transverse rods. Double suspension level control. Suspension range: +100 mm / -200 mm. Possible combinations for transverse slope, 2 x 9,5°.
Tyres:	10 tyres, 16.00 R 25. All axles with single tyres.
Steering:	ZF dual-circuit hydraulic power-assisted steering.
Brakes:	Service brake: pneumatic dual-circuit, acting on all wheels. Air-dryer. Permanent brake: retarder integrated with Allison automatic powershift. Hand brake: pneumatically operated spring-loaded brake, acting on 2nd to 5th axle.
Driver's cab:	Aluminium, 2-man-design, safety glass, driver's seat with hydraulic suspension, engine-dependent hot-water heating. Complete instrumentation and driving controls.
Electrical system:	Three-phase generator 28 V / 55 A, 2 batteries 12 V / 170 Ah. Lighting system and signals 24 V.

Superstructure

Frame:	KRUPP-made, torsion-resistant, welded construction in high strength steel.
Engine:	Mercedes-Benz OM 366 LA Diesel, 6 cylinders, water-cooled, 124 kW (168 HP) at 2300 min ⁻¹ (DIN 6271 IFN), max. torque 560 Nm at 1400 - 1600 min ⁻¹ . Tank capacity: 370 l.
Hydraulic system:	3 separate circuits: 1 axial piston double pump, 1 triple gear pump with cumulative flow control. Tank capacity: 1460 l hydraulic oil.
Control system:	Infinite variation of all crane movements by hydraulic pilot control and control levers with automatic reset to zero.
Main hoist:	Axial piston variable displacement motor with planetary gear and automatic brake.
Derricking:	1 cylinder with safety holding valve, boom angle from -1,6° to +83°.
Slewing gear:	Axial piston fixed displacement motor with planetary gear, holding brake and service brake.
Operator's cab:	Aluminium, full vision, safety glass, fully adjustable operator's seat with hydraulic suspension. Armrest-integrated crane controls. Clearly arranged engine instrumentation and crane operating controls. Hot-water heating system.
Safety installations:	Hoist and lowering limit switch, pipe break safety valves, pressure relief valves.
Telescoping boom:	Welded construction in high strength steel, 1 pivoting basic section, 3 telescopic sections. Total length 42,3 m. All-hydraulic extension under partial load.
Electrical system:	Three-phase generator 28 V / 55 A, 2 batteries 12 V / 143 Ah.

Additional equipment

Drive:	10 x 8
Swing-away lattice:	2-stage, 11,6 / 19 m, stowing alongside boom.
Auxiliary hoist:	2nd hoisting gear
Driver's cab:	Engine-independent cab heater / engine preheater, bunk, 3rd seat.
Safe load indicator:	Electronic load moment safety device EKS 83 with automatic cut-out and digital display for actual and admissible load, radius and various working conditions.

Further equipment available upon request.

Gewichte / Geschwindigkeiten Weights / Working speeds Poids / Vitesses



Achse Axle	1	2	3	4	5
?	12	12	12	12	12

Gesamtgewicht
Total weight
Poids total
60*

* mit Teilgegengewicht, with partial counterweight, avec contrepoids partiel

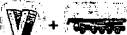


Traglast \uparrow Lifting capacity (metric tons) Poids de levage \uparrow
80
50
24

Rollen Shaaves Poulies
5
3
1

Stränge Parts of line Brins
2 = 11
1 = 7
1 = 3

Gewicht kg
Weight kg
Poids kg
1000
800
500



Gang Gear	1	2	3	4	5	6	Max. Steigfähigkeit Gradeability max. Pentes max admissibles
Range							
Speed							
On-road (km/h)	13,0	21,2	33,5	49,0	68,0	6	
Off-road (km/h)	7,6	12,4	19,6	28,6	39,6	4	58%
Terrain							
Braking							
Tyre							
Pneumatics							16.00 R 25



Antriebs Drives	stufenlos Infinitely variable progressivement variable	Seil \varnothing / Seillänge Rope diameter / Rope length Diamètre du câble / Longueur du câble	Max. Seilzug Max. single line pull Effort max sur brin simple
Einbauelement Mount-Subwerk			
Main hoist	0 - 130 m/min single line	28 mm / 220 m	93,7 kN
Levage principal	m/min au brin simple		
Hilfs-Subwerk Auxiliary hoist	0 - 130 m/min single line	23 mm / 220 m	92,7 kN
Levage auxiliaire	m/min au brin simple		
Drehwerk Swing gear	0 - 2,5 min ⁻¹		
Orientieren Orientation			
Wippenwerk Derricking	ca. 65 s / Auslagerstellung bis = 83° approx. 65 seconds to reach = 83° boom angle		
Rolovorg Telescoping	ca. 65 s pour arriver à = 83° (angle de relevage)		
Teleskopieren Telescoping	ca. 210 s für Auslagerlänge 13,2 m - 42,3 m approx. 210 seconds for boom length from 13,2 m - 42,3 m		
Telescopage	env. 210 s pour passer de 13,2 m - 42,3 m (longueur de flèche)		

Teleskopausleger
Telescopic boom
Flèche télescopique

Lastaufnahmemittel
Hook blocks and hook
Moufle de crochet

Abgestützt
On outriggers
Stabilisateurs sortis

Kranbewegungen
Crane movements
Mouvements de la grue

Arbeitsbereich
Working range
Rayon d'opération

Geschwindigkeit
Speed
Vitesse

Achslast
Axle load
Charge essieu

Klappspitze
Swing-away extension
Flèche pivotante