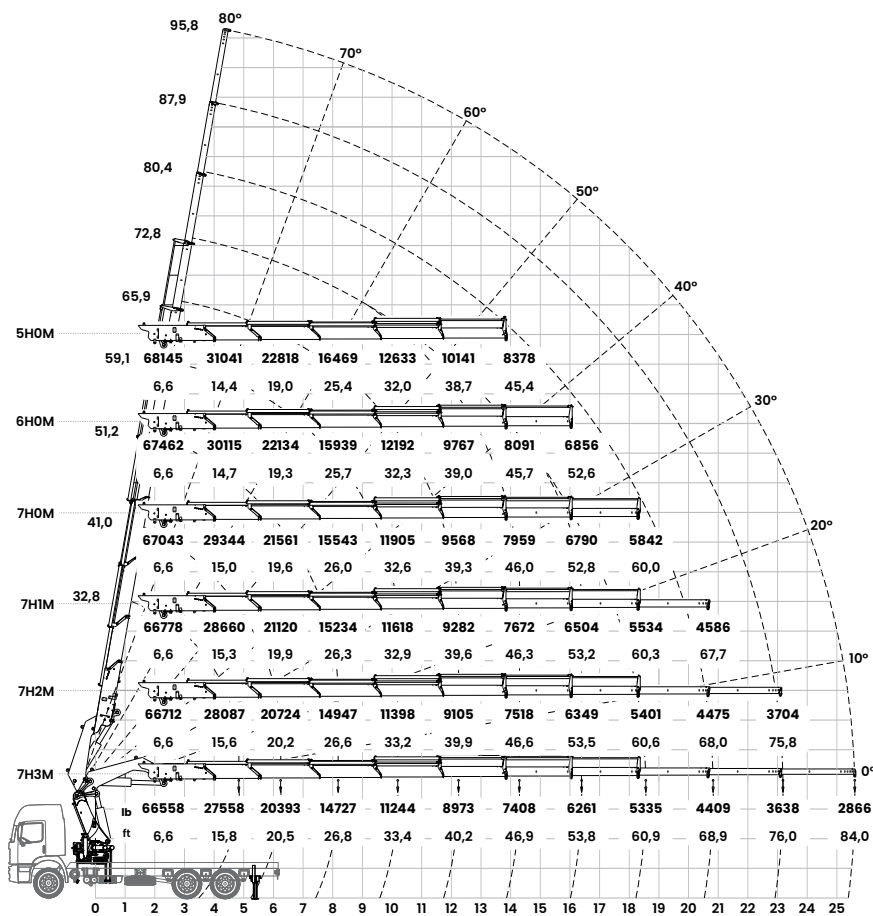
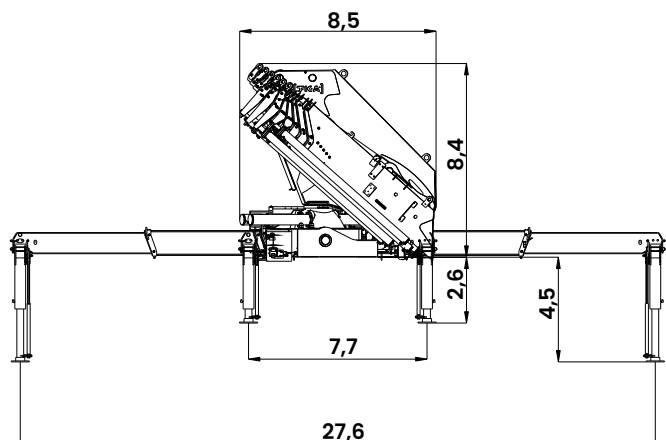


# 66.700

## diagram

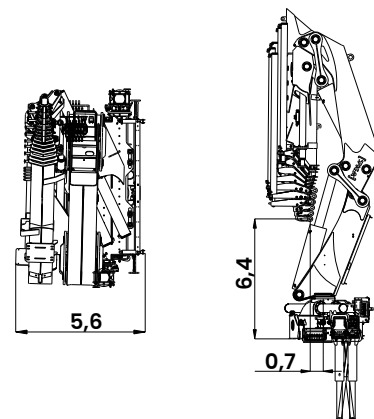


## dimensions



## specification

max. manual vertical reach	95,8 ft
max. manual horizontal reach	84,0 ft
max. hydraulic vertical reach	72,8 ft
max. hydraulic horizontal reach	60,9 ft
stabilizer spread	27,6 ft
elevation angle of boom	80°
slewing angle	400°
slewing torque	66,09 kN.m
max. operating pressure	4641 psi
dead weight - 5H0M / 6H0M / 7H0M	12633 lb / 13096 lb / 13426 lb
dead weight - 7H1M / 7H2M / 7H3M	13625 lb / 13823 lb / 13933 lb
fitting space required	5,9 ft
oil tank capacity	250 l
min. gross vehicle weight (GVW)	50706 lb*



\* traught vehicle integration study